

Accessories

R95-116



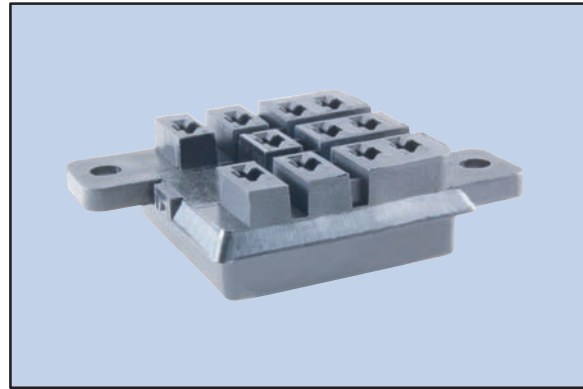
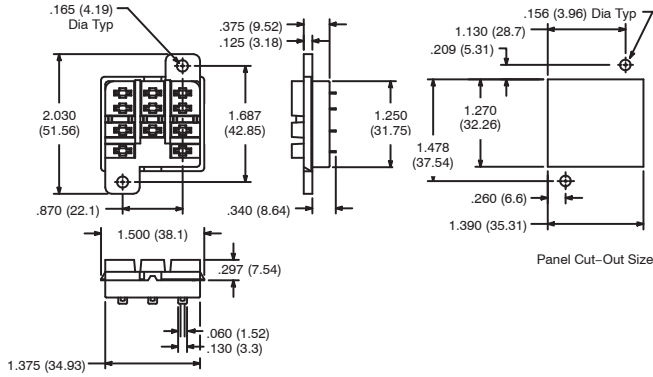
11-Pin Square Base Socket

Features

- Panel Mount
- Solder Terminals
- Accepts .187" Blade Terminals
- SPDT, DPDT and 3PDT Applications

Electrical Rating:

300 Volts, 10 Amps



R95-117



14-Pin Miniature Socket

Features

- Panel Mount
- DIN Rail Mountable
- Pressure Clamp Screws
- DPDT or 4PDT
- Hold down clip not supplied with socket, available separately (R95-001)

Electrical Rating:

300 Volts, 10 Amps

