

SmartNode™ Multi-Port FXS/FXO VoIP Gateways

Model 4110 Series



The SmartNode 4110 Series of VoIP Media Gateways supports up to eight telephone connections integrating PSTN, PBX, and standard phones for voice and fax over any IP network. Now the corporate, small, or remote office can use voice-over-packet services to eliminate toll charges, access local PSTN calling, and secure voice traffic end-to-end.

Up to 8 FXS and/or FXO ports

Compact, reliable stand-alone VoIP gateway with different port options. Supports simultaneous voice or fax calls on all ports.

Advanced Local Call Switching

Virtual interfaces and routing tables provide industry leading flexibility in call handling programming. Local call switching, soft fallback to alternative routes. Simultaneously connects to multiple SIP services/IP PBXs.

Complete SIP and T.38 support

Supports the complete range of industry standard VoIP: SIP, H.323, T.38 fax, fax and modem handling, DTMF relay. Codecs G.729, G.723, etc.

Easy Management & Provisioning

Web-based management, SNMP, command line interface. Automated mass provisioning for efficient large-scale deployments.

Outstanding Interoperability

Proven integration for voice and T.38 fax with 3CX®, Asterisk™, PingTel™ and other leading IP PBX systems and soft switch vendors.

Why SmartNode?

- Patton Quality
- Made in the USA
- Unrivaled Customer Support
- FREE Tech Support and Upgrades

SmartNode™ Awards

- **2015 Communications Solutions Product of the Year: SmartNode™ 5300 ESBR**
- **2015 Internet Telephony Product of the Year: SmartNode™ Open Gateway Appliance (SNOGA)**
- **2013 Unified Communications Excellence Award: SmartNode™ 4940 VoIP Gateway**

The SmartNode 4110 Series VoIP Media Gateway supports up to eight transparent phone calls while leveraging VoIP for lower-cost carrier and corporate access. Connecting to any analog phone, fax, or PBX, the SN4110 Series is an effective and flexible solution for toll-bypass, remote/branch office voice connectivity, and enhanced carrier services.

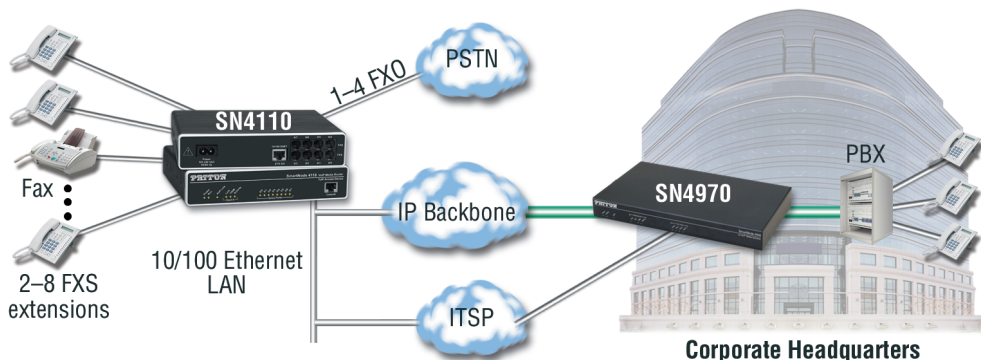
The SN4110 Series is the perfect choice for phone-to-IP connectivity supporting up to 8 FXS ports or a combination of 4 FXS and 2 or 4 FXO ports. With its FXS analog ports, the SN4112S connects to any legacy telephone or PBX and provides dial-tone, ringing, and caller-ID. When equipped with FXO ports, the local PSTN can be accessed enabling local calling and enhanced toll-bypass applications while using a single connected telephone. Flexible call integration allows per-port telephone numbers, programmable call progress tones, and distinctive ringing. With Telephony-over-IP (ToIP) call switching, calls can automatically select the least-cost-route while providing flexible numbering plans and end-to-end feature transparency. PPPoE, DHCP, and VLAN offers universal IP connectivity and optional IPsec VPN with AES/3DES guarantees secure voice over the public network.

Patton's SmartNode SN4110 Series delivers the legacy phone interfaces, service transparency, and flexible PSTN integration required for true converged packet voice.

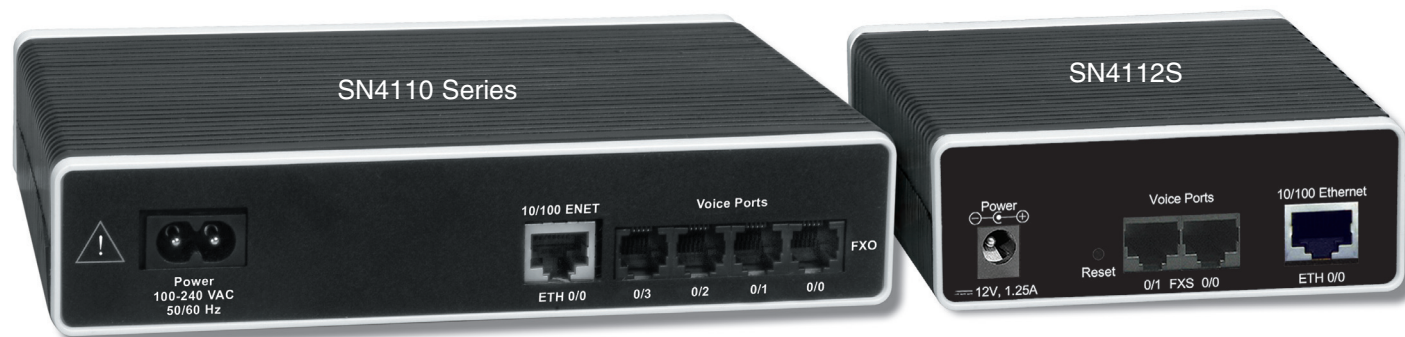
Visit www.patton.com/smartnode for more information.

Typical Application

In enterprise networks, transparent access to PBX features while using existing equipment is key to low-cost operations. Now, instead of installing a separate PBX at the remote office, the SmartNode 4110 Series is able to provide transparent extension while simultaneously connecting multiple locations. The extensions can be managed centrally and benefit from PBX services such as calling groups, least cost routing, and call forwarding. PSTN access allows local calls to be processed without using corporate remote PBX resources. Additionally, the corporate PBX can break-out and bypass any long distance charges by using the remote office for the local gateway.



SN4110 Series Multi-Port FXS/FXO VoIP Gateway



Specifications*

Capacity

Up to 8 simultaneous VoIP or T.38 fax calls (depending on the model)

Voice Signaling

- H.323v4, SIPv2 (B2BUA capable, multi-instance, simultaneous support of multiple registrars and direct IP dialing)
- SIP call transfer, redirect
- DTMF in-band & out-of-band
- All tones programmable (dial, ringing, busy)

Voice Processing

- CODEC G.711 a-law/mu-law, G.723, G.729ab,
- G.726, G.727. T.38 fax relay (9.6 k, 14.4 k)
- G.711 transparent fax and bypass

Call Switching and Services

- Virtual interfaces
- Transparent line extension

- Regular expression based call routing and number manipulation
- Number blocking • Short-dialing
- Digit collection, distribution and hunt groups
- Fallback Routing: Soft fallback to alternative route(s)

FXS Connectivity

- 2-wire Loopstart on RJ-11/12
- Short haul loop 1.1km @3REN
- EuroPOTS (ETSI EG201188)
- Programmable AC impedance, feeding, ring and on-hook voltage
- Caller-ID FSK and ITU V.23/Bell 202 generation

FXO Connectivity

- 2-wire Loopstart on RJ-11/12
- Programmable impedance, ring detection, tone detection, disconnect supervision
- Caller ID detection

IP services

- One 10/100 Ethernet port
- DHCP Client
- Access control lists
- Traffic policing
- IEEE 802.1p, TOS, DiffServ labeling
- IEEE 802.1Q, VLAN tag insertion/deletion (simultaneous support of multiple VLANs)
- IPsec, IKE, AES/DES/3DES encryption (optional)

Management

- Web/HTTP, CLI with local console and remote Telnet access
- TFTP configuration & firmware loading
- SNMP MIB II and product MIB
- Secure mass provisioning for firmware and unit/subscriber configuration
- Built-in diagnostic tools (trace, debug, call generator)

System

- CPU Motorola MPC870 @ 66MHz
- Memory 32MB SDRAM/8MB Flash
- Power 100–240 VAC (50/60 Hz)
- Power dissipation 4–12W, model dependent

Environment

Temp.: 32–122°F (0–50°C)
Humidity: Up to 90% (non condensing)

Compliance

- EMC compliance: EN55022 and EN55024
- Safety compliance: EN 60950
- CE compliance
- FCC Part 15 Class A
- TBR21 (FXS)
- RoHS

Ordering Info

Obtain ordering info for this product by using the QR code at right or by contacting:

- web: http://www.patton.com/products/product_detail.asp?id=51&tab=Ordering
- email: sales@patton.com
- tel: +1 301.975.1000



Patton Electronics Co.
7622 Rickenbacker Drive
Gaithersburg, Maryland 20879, USA
Phone +1 301 975 1000
Fax +1 301 869 9293
E-mail sales@patton.com
Web www.patton.com

Patton-Inalp Networks AG
Meriedweg 7
CH-3172 Niederwangen, Switzerland
Phone +41 (31) 985 25 25
Fax +41 (31) 985 25 26
E-mail we@patton.com
Web www.patton.com

Patton Hungary Zrt
Gábor Dénes utca 4., Infopark Building C
Budapest H-1117, Hungary
Phone +36 1 439 4840
Fax +36 1 439 4844
E-mail ce@patton.com
Web www.patton.com

07MSN4110-DS11

Patton is a registered trademark, and is a trademark of Patton Electronics Company in the United States and other countries.

* Specifications subject to change without notice.

** Internal power supplies available on special-order basis. For more information, contact sales@patton.com.