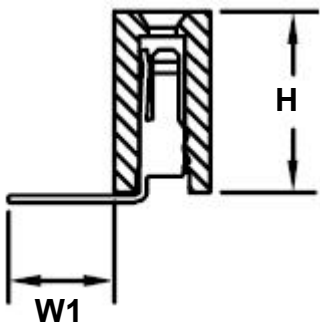
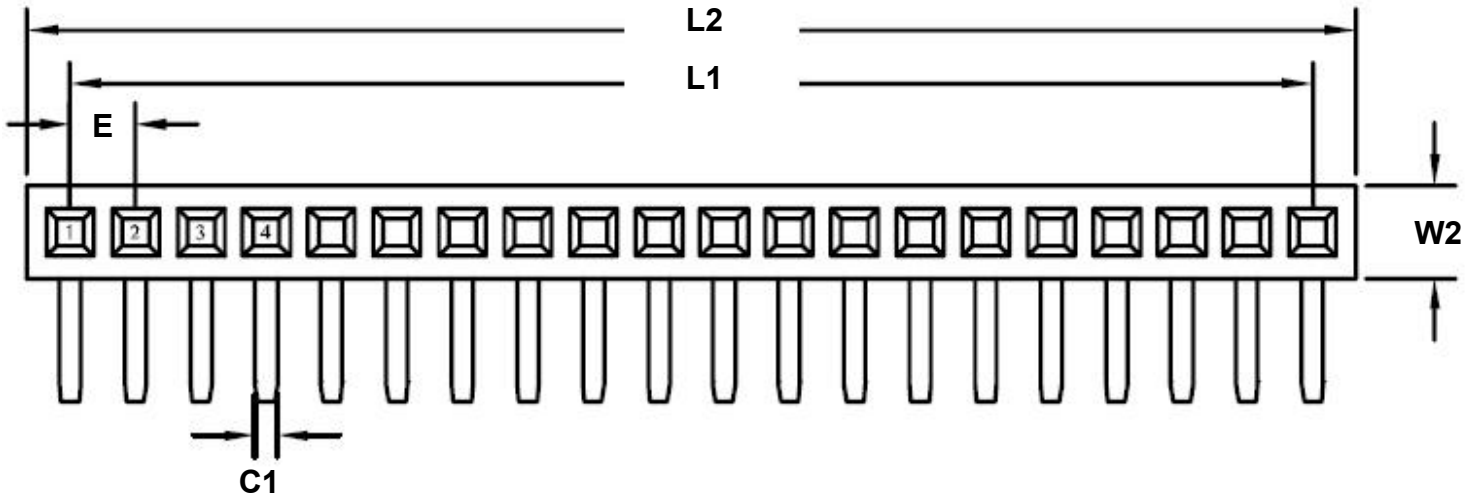
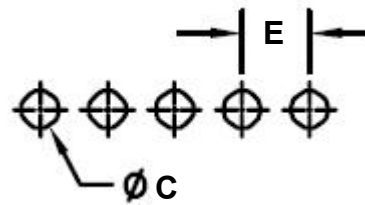


2.00 mm 40 pin Right Angle Female Header Through Hole Gold

REF.	DIMENSIONS					
	mm			inches		
	MIN.	TYP.	MAX.	MIN.	TYP.	MAX.
C		0.80				
C1		0.50				
E		2.00				
H		4.30				
L1		78.00				
L2		80.70				
W1		2.80				
W2		2.75				



Recommended PCB Hole Layout



SPECIFICATIONS

Plastic body construction: PA6T plastic (320°C melting point)

Pin construction: Gold plated (brass pin, with 1um gold over 50um nickel)

Operating temperature range: -40°C to +130°C

Reflow maximum temperature: +260°C