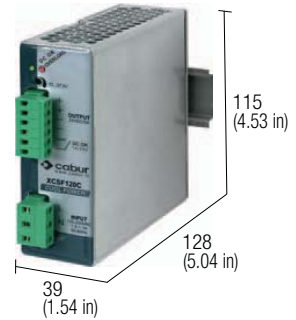


Single-phase switching power supply 120-230 Vac output power 120 W

- Single-phase input 90...264 Vac and DC 100...345 Vdc
- Short circuit, overload, over temperature, input and output overvoltage protections
- High outrush current to guarantee downstream overcurrent protections selectivity and to start-up heavy loads
- Failure contact for Uout -10%
- Compact dimensions
- Suitable for applications in SELV and PELV circuits



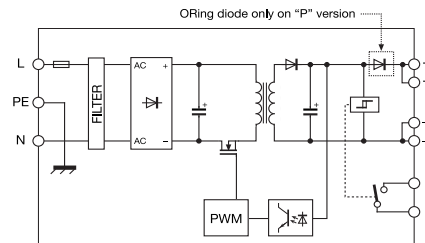
(5)



NOTES

- The depth dimension includes the terminal blocks and the DIN clamp.
- (2) With 100...127 Vdc input voltage, constant output power and $T_a > 45^\circ\text{C}$, the output current must be derated by 25%
 - (3) Over 45°C (113°F) apply a derating $-0.08\text{ A}/^\circ\text{C}$ for version C, CP and CPH; $-0.12\text{ A}/^\circ\text{C}$ for version B; $-0.05\text{ A}/^\circ\text{C}$ for version DP;
 - (4) For this peak current, the output voltage does not drop more than 10% of the nominal value, but the current value, provided by the power supply also depends on the total line resistance.
 - (5) Available ATEX version (IIG Ex nA nC IIC T4 Gc X), for order adds "-EX" to the code, example XCSF120C-EX.
 - (6) article available till seal-out

BLOCK DIAGRAM



Special version for DC motors

VERSIONS

- Output 24 Vdc 5 A
- Output 24 Vdc 5 A redundant version
- Output 12...15 Vdc 7 A
- Output 48 Vdc 2.5 A

INPUT TECHNICAL DATA

- Input rated voltage
- Frequency
- Current @ nominal Iout (Uin 120 / 230 Vac)
- Inrush peak current
- Power factor
- Internal protection fuse
- External protection on AC line

OUTPUT TECHNICAL DATA

- Output rated voltage
- Output adjustable range
- Continuous current
- Overload limit
- Short circuit peak current
- Load regulation
- Ripple @ nominal ratings
- Hold up time @ In (Uin 120 / 230 Vac)
- Overload / short circuit protections
- Status display
- Alarm contact threshold
- Parallel connection
- Redundant parallel connection

GENERAL TECHNICAL DATA

- Efficiency (Uin 120 / 230 Vac)
- Dissipated power (Uin 120 / 230 Vac)
- Operating temperature range
- Input/output isolation
- Input/ground isolation
- Output/ground isolation
- Standard/approvals
- EMC Standards
- MTBF @ 25°C @ nominal ratings
- Overvoltage category/Pollution degree
- Protection degree
- Connection terminal
- Housing material
- Approx. weight
- Mounting information

MOUNTING ACCESSORIES

- Mounting rail type according to IEC60715/TH35-7.5
- Mounting rail type according to IEC60715/G32

Cod. XCSF120C

CSF120C

Cod. XCSF120CP

CSF120CP

Cod. XCSF120B

CSF120B (6)

Cod. XCSF120DP

CSF120DP

120-230 Vac (range 90...264 Vac / 100...345 Vdc) (2)

47...63 Hz

1.9 A / 1.1 A $\pm 10\%$

< 20 A

> 0.65

T 3.15 A replaceable

circuit breaker: 4 A - C characteristic - fuse: T 4 A

24 Vdc

23...27.5 Vdc

5 A @ 45°C (3)

8 A for >30 s

with 90% Un (4)

15 A for 50 ms (4)

< 1%

$\leq 30\text{ mVpp}$

>17 ms / >72 ms

hiccup at the overload limit with auto reset / over temperature protection

"DC OK" green LED / "DC OK" alarm contact/ "Overload" red LED

<21.6 Vdc

possible

possible with external ORing diode

factory provided with internal ORing diode

12...15 Vdc

12...15 Vdc

7 A @ 45°C (3)

8 A for >30 s

with 90% Un (4)

15 A for 50 ms (4)

< 1%

$\leq 40\text{ mVpp}$

>24 ms / >80 ms

hiccup at the overload limit with auto reset / over temperature protection

"DC OK" green LED / "DC OK" alarm contact/ "Overload" red LED

<10.8 Vdc

possible

possible with external ORing diode

factory provided with internal ORing diode

48 Vdc

45...55 Vdc

2.5 A @ 45°C (3)

8 A for >30 s

with 90% Un (4)

7.5 A for 50 ms (4)

< 1%

$\leq 30\text{ mVpp}$

>16 ms / >81 ms

hiccup at the overload limit with auto reset / over temperature protection

"DC OK" green LED / "DC OK" alarm contact/ "Overload" red LED

<43.2 Vdc

possible

factory provided with internal ORing diode

factory provided with internal ORing diode

>86% / >90%

19 W / 13 W

-20...+60°C, with derating over 45°C / over temperature protection (3)

3 kVac / 60 s SELV output

1.5 kVac / 60 s

0.5 kVac / 60 s

EN50178, EN61558, EN60950, IEC950, UL508, UL60950

EN61000-6-2, EN61000-6-4, EN61000-4-2, EN61000-4-3, EN61000-4-4, EN61000-4-5, EN61000-4-6, EN61000-4-11

>500'000 h acc. to SN 29500 / >150'000 h acc. to MIL Std. HDBK 217F

II / 3

IP 20 IEC 529, EN60529

2.5 mm² pluggable screw type

aluminium

400 g (14.12 oz)

vertical on rail, allow 10 mm spacing between adjacent components

PR/3/AC, PR/3/AC/ZB, PR/3/AS, PR/3/AS/ZB