

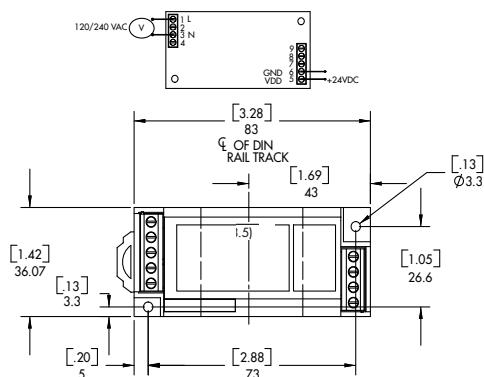


The **CRPS24VDC** Series Power supplies are designed to meter CR Magnetics digital and analog transducers. These switched mode power supplies are compact and efficient with a modern clean looking case.

## Features

- 35mm DIN Rail or Panel Mount
- Available with 120Vac/Vdc and 240Vac/Vdc Input
- 24 VDC Powered
- Use with CR Magnetics Transducers
- Highest precision available
- Connection diagram printed on case

## Regulatory Agencies



## CONNECTION DIAGRAM

Specifications	
Input Voltage	120V, 240V ± 10% 50/60Hz
Rated Output	200mA
Output Voltage	+24VDC
Output Ripple	≤ 10 mV

## PART NUMBERS

<b>CRPS24VDC</b>	-		Power Supply
------------------	---	--	--------------

- 120** - 120V Power Supply
- 240** - 240V Power Supply with 24 VDC Output

## CRD485-232

RS485 to RS232 Converter Accessory  
Connect PC to RS485 Bus

