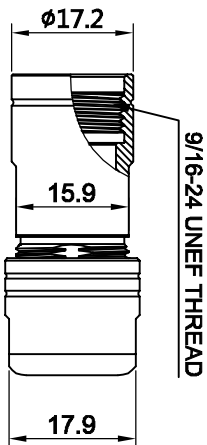
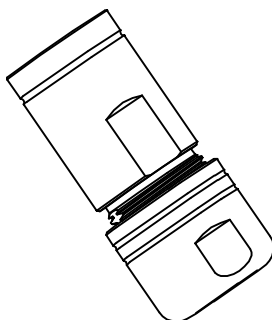
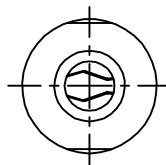
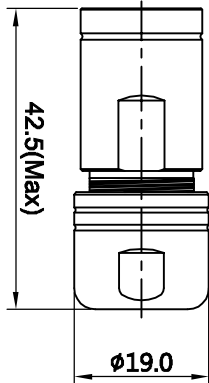


REVISIONS					
REV	ECO	DESCRIPTION	DATE	BY	APPR
B1	-	RELEASED DRAWING	AUG-10-2015	BEN	TOMMY



P/N	SHIELDING RING	CABLE RANGE
RT05-10CG-NS2	WITH	φ5-φ8.5mm

- NOTES : (UNLESS OTHERWISE SPECIFIED)
- MATERIAL :
 - NUT : ZINC ALLOY, NICKEL PLATED.
 - CLAMP INSERT : THERMOPLASTIC UL94 V-0.
 - EMI SHIELDING RING : STAINLESS STEEL.
 - BACK SHELL : ZINC ALLOY, NICKEL PLATED.
 - O-RING : SILICONE RUBBER.
 - GROMMET : RUBBER.
 - ROHS COMPLIANT.
 - ALL DIMENSIONS ARE FOR REFERENCE USE ONLY.

QUANTITY	PART NUMBER	DESCRIPTION	ITEM

MATERIALS LIST			
UNLESS OTHERWISE SPECIFIED	SIGNATURES	DATE	
1) All dimensions are in millimeters. 2) Tolerances are as follows: 3 Pl. DEC 20.08 4 Pl. DEC 20.08 5 Pl. DEC 20.08 9) Note reference =	DESIGN: BEN CHECKER: [Signature] ENGINEER: [Signature] APPROVAL: [Signature]	AUG-10-2015	

PROCESS SPECIFICATIONS:	THIS DRAWING IS SUBJECT TO THE FOLLOWING SPECIFICATIONS AND PERFORMANCE DATA. SPECIFICATIONS ARE THE PROPERTY OF SINE SYSTEMS AND ARE NOT TO BE REPRODUCED OR TRANSMITTED IN ANY FORM OR BY ANY MEANS, ELECTRONIC OR MECHANICAL, INCLUDING PHOTOCOPYING, RECORDING, OR BY ANY INFORMATION STORAGE AND RETRIEVAL SYSTEM. ALL DIMENSIONS ARE SUBJECT TO NORMAL MANUFACTURING VARIATIONS.
NEXT ASMT:	

SIZE	TYPE	DWG. NO.	REVISION
B	C-	RT05-10CG-NS2	B1

ECO-MATE,RT SERIES, CORD GRIP, SIZE 10.	Amphenol Sine Systems - www.amphenol-sine.com 44724 Watney Drive Clinton Township, MI 48036
--	--