

# Accessories

## R95-150



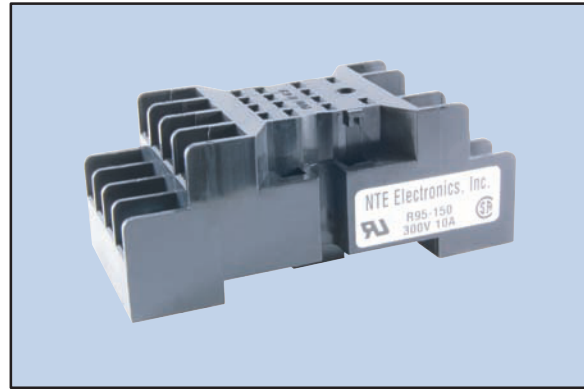
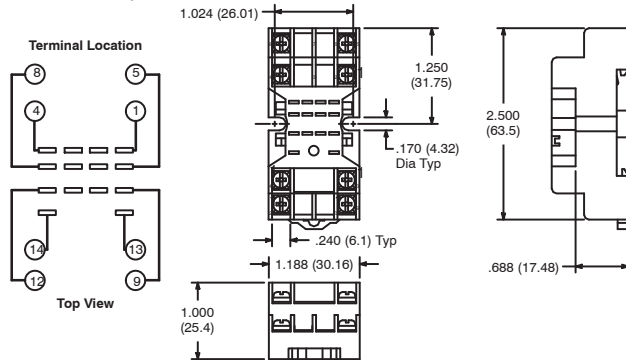
## 8-Pin Miniature Socket

### Features

- Panel Mount
- DIN Rail Mountable
- Pressure Clamp Screws
- DPDT Applications
- Hold down clip not supplied with socket, available separately (R95-001)

### Electrical Rating:

300 Volts, 10 Amps

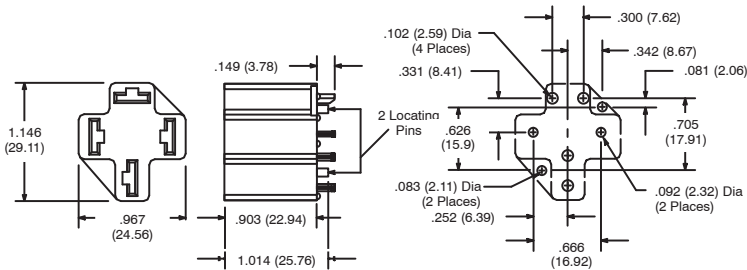


## R95-159

## 4-Pin PC Board Socket

### Features

- For R51 Series Automotive Relay (70 Amp ONLY)
- Continuous Temperature Rating of +130°C



## R95-160

## 5-Pin PC Board Socket

### Features

- For R51 Series Automotive Relay (50 Amp ONLY)
- Continuous Temperature Rating of +130°C

