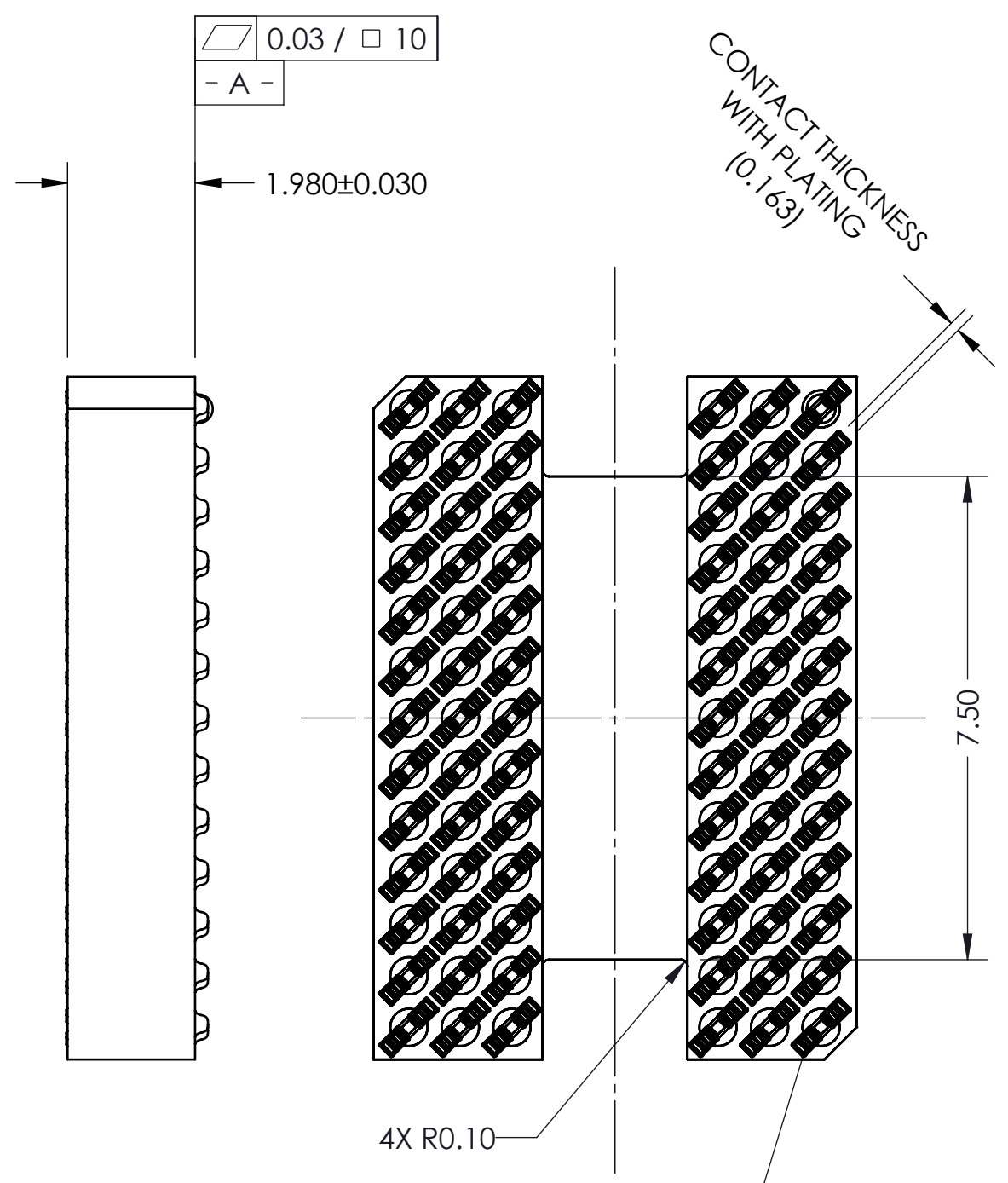
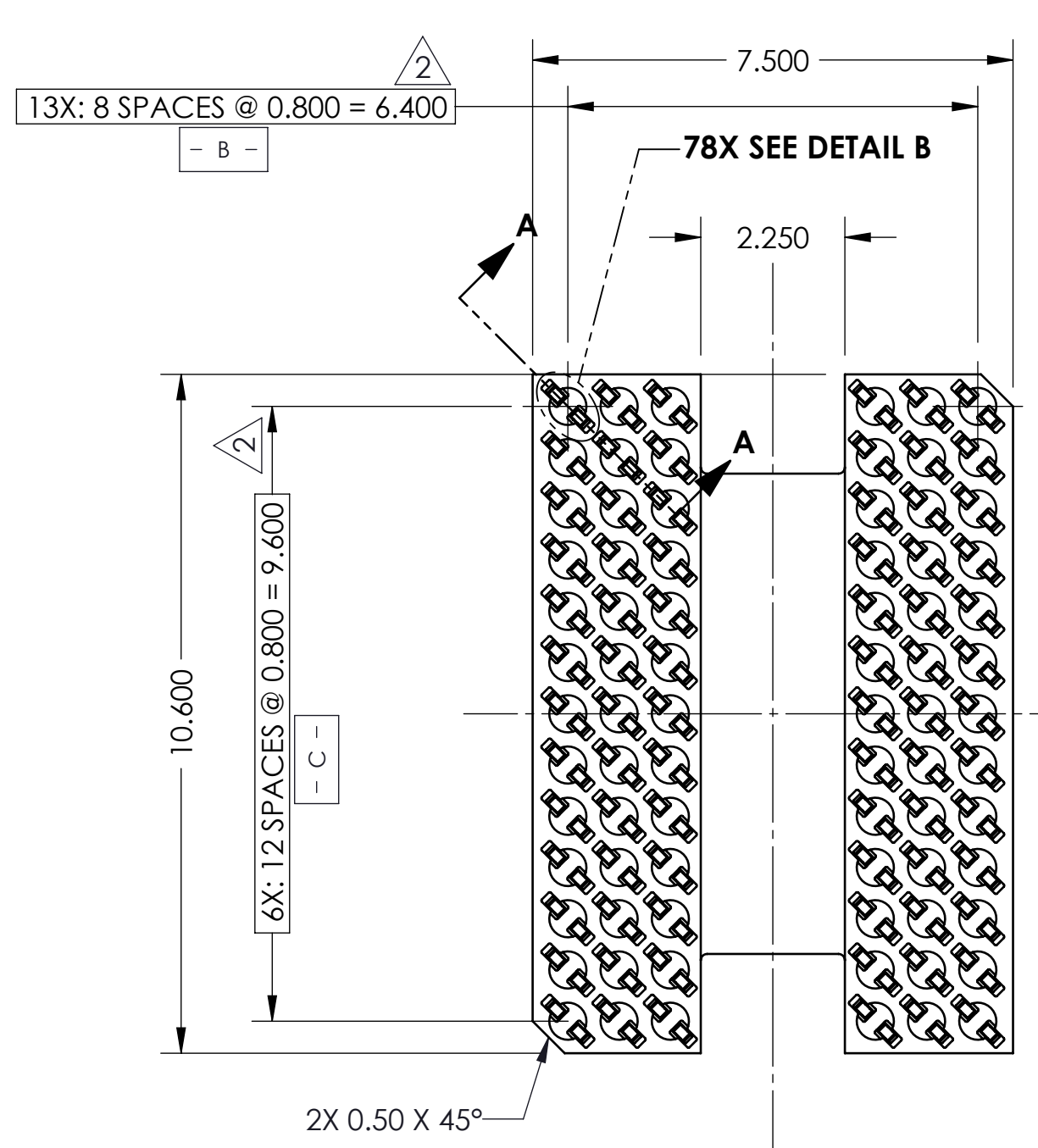
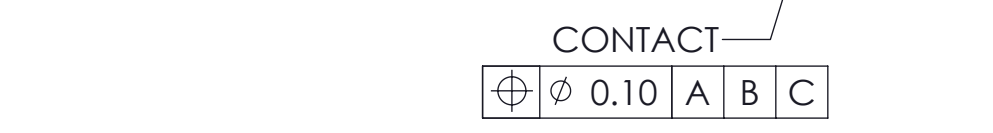
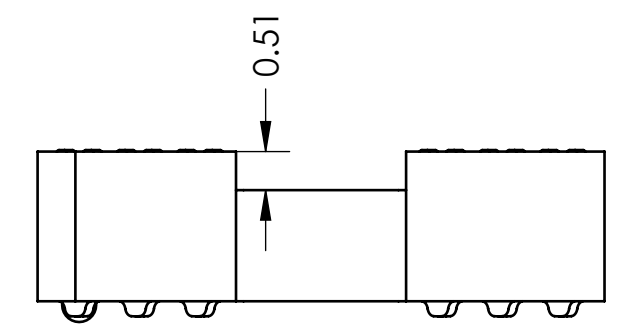


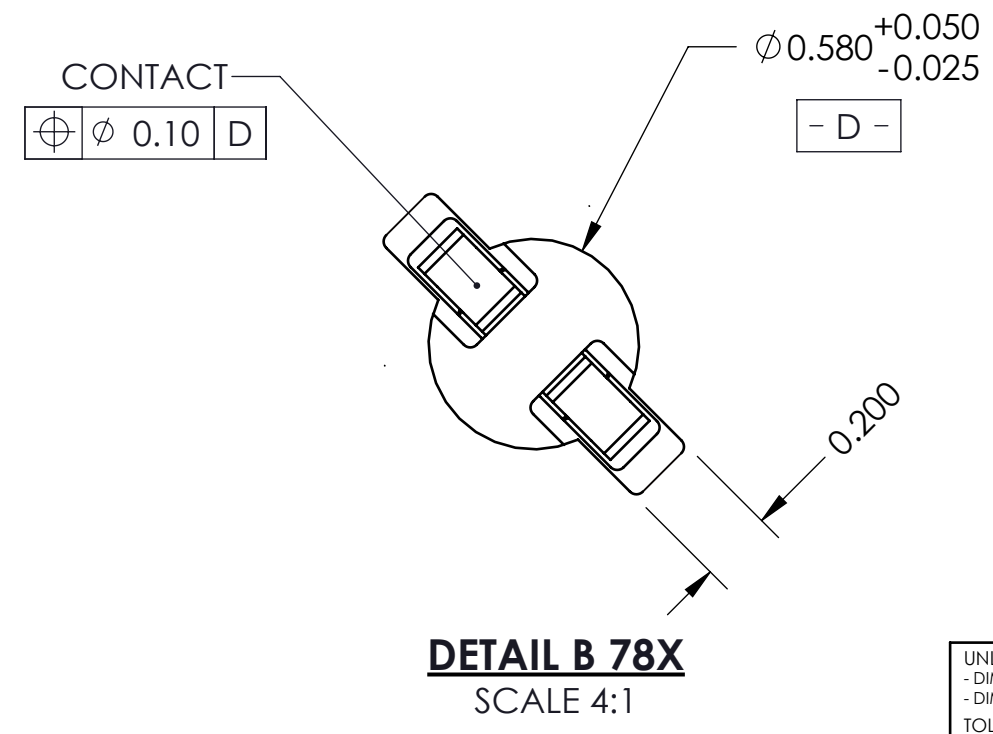
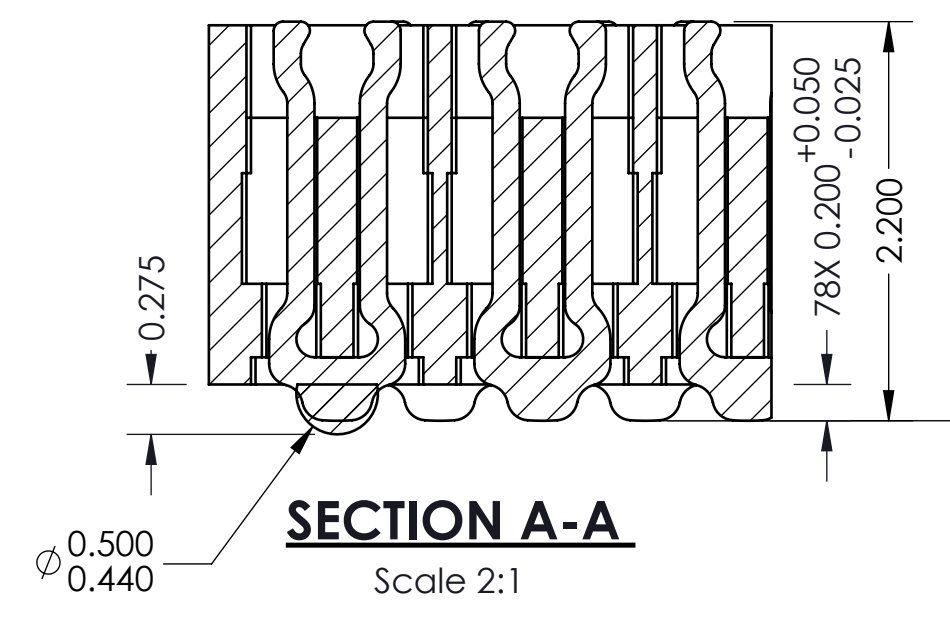
| REV | ECO | BY | DESCRIPTION | APV | DATE |
|-----|------|-----|----------------|-----|--------|
| A | 5408 | DJP | Initial Design | AJN | 4/9/20 |



- Notes:
- Footprint part number is 104311-0233
 - Locates center of contact slots.
 - Press size: 7.5 x 10.6
 - Datum B and C determined by $\phi 0.580$ opening in corner slots.
 - Unless otherwise noted, all features located $\oplus 0.10$ A B C



| PARTS LIST | |
|-------------|---|
| Part Number | Description |
| 107022-0048 | SCKT, 78GRY7.5X10.6-0.80, EUT |
| 105528-0073 | CS, 90GRY9X13-0.80 |
| 103864-0119 | PRESS, DEV INS, 7.5X10.6 (SOLD SEP.) |
| 107030-0038 | STEN,FLEX, 78GRY7.5X10.6-0.80 (SOLD SEP.) |



UNLESS OTHERWISE SPECIFIED - DIMENSIONS ARE IN MILLIMETERS - DIMS APPLY AFTER PLATING - TOLERANCES UNLESS OTHERWISE NOTED:

ANGLES ±1°

DECIMALS
X.X ±0.25
X.XX ±0.10
X.XXX ±0.050

LEGEND:
X NOTE CALLOUT
A REVISION CHANGE
X ITEM NUMBER

THE INFORMATION CONTAINED IN THIS DRAWING IS THE SOLE PROPERTY OF IRONWOOD ELECTRONICS, INC. ANY REPRODUCTION IN PART OR WHOLE WITHOUT THE WRITTEN PERMISSION OF IRONWOOD ELECTRONICS, INC. IS PROHIBITED.

CAD GENERATED DRAWING DO NOT MANUALLY UPDATE

DRAWING APPROVALS

| NAME | DATE |
|------|--------|
| DJP | 4/9/20 |
| AJN | 4/9/20 |

THIRD ANGLE PROJECTION

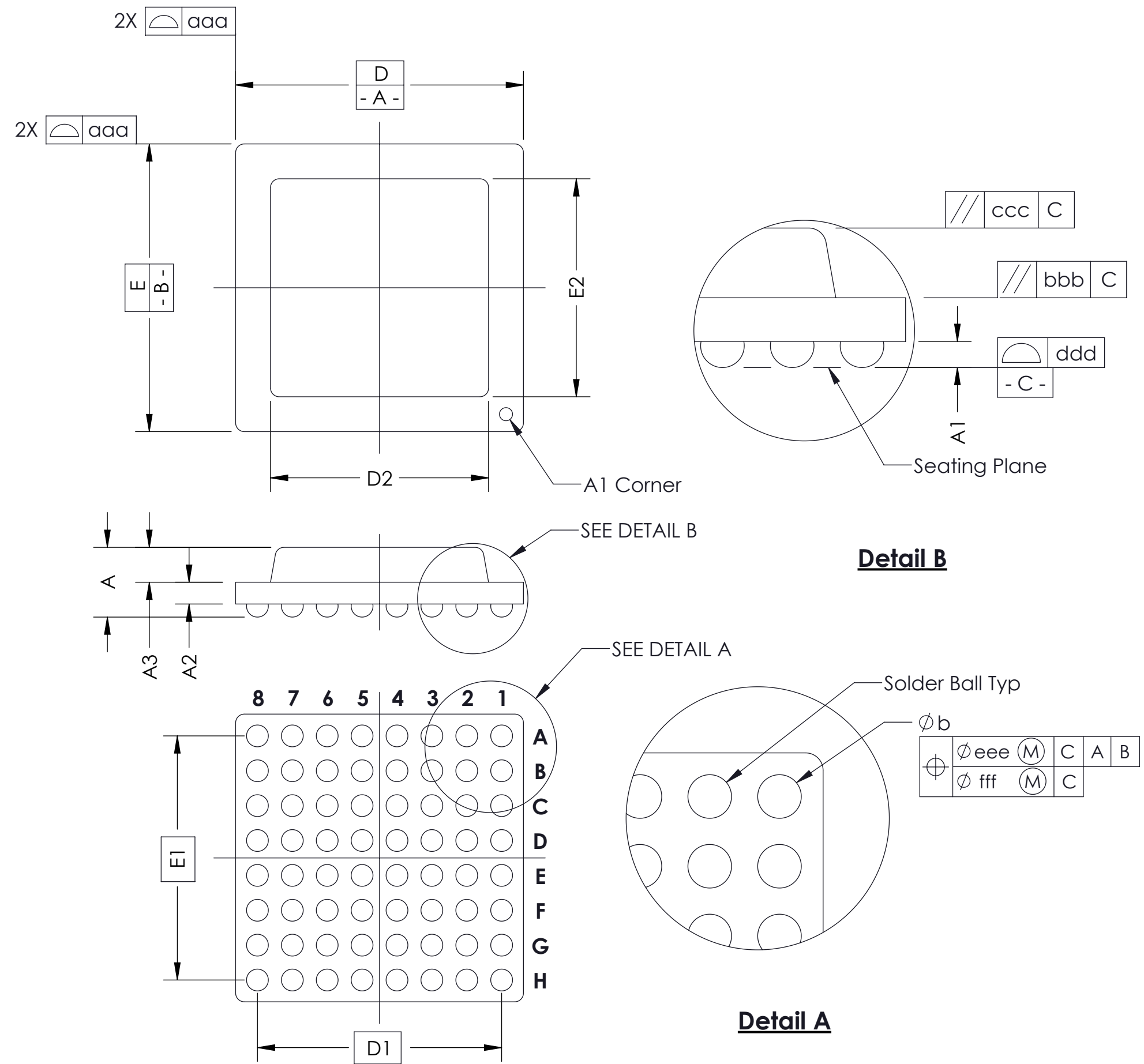
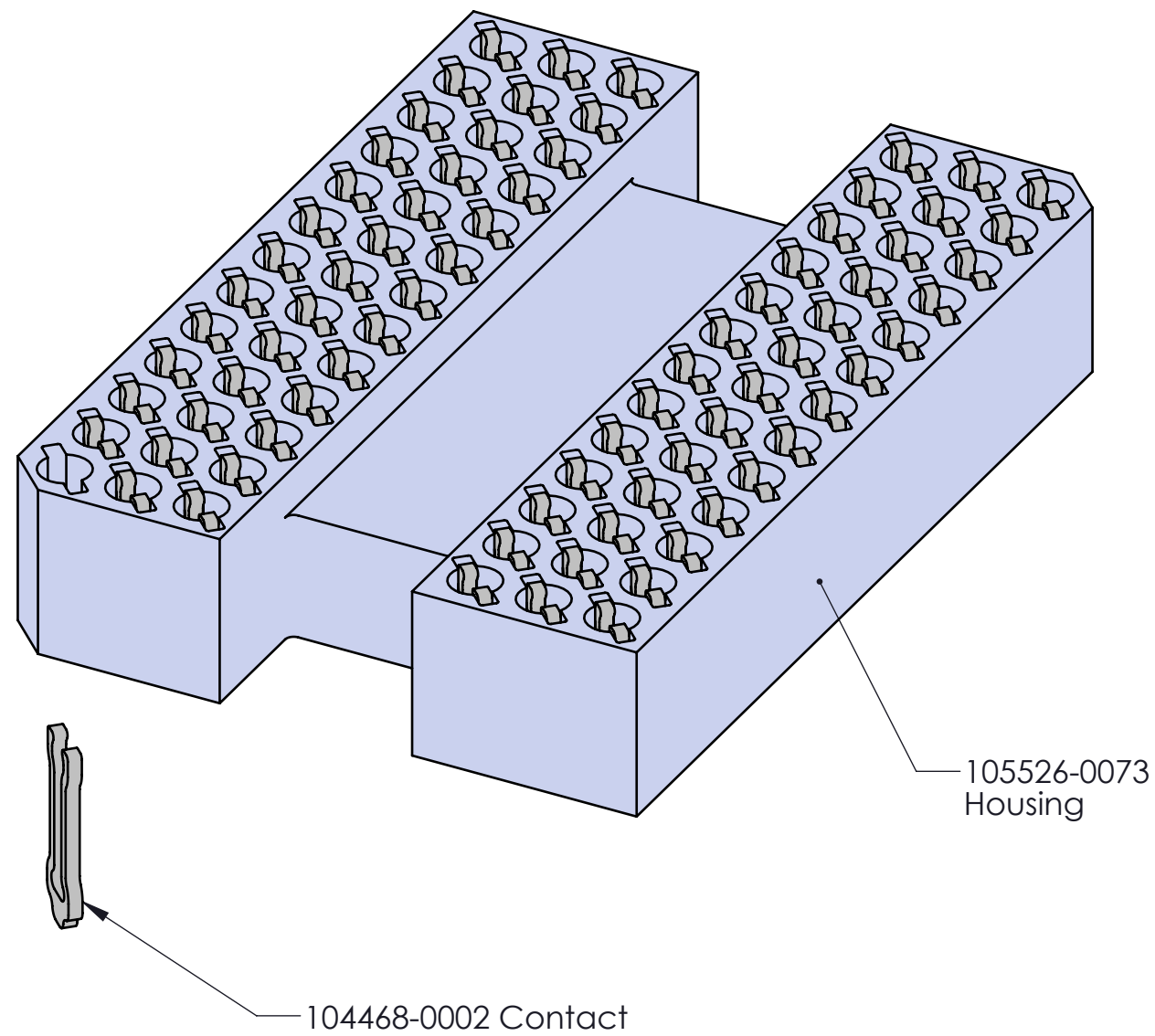
IRONWOOD ELECTRONICS, INC
EAGANDALE CT
EAGAN, MN 55121. 952-229-8200

SCKT, 78GRY7.5X10.6-0.80, DS

| | | | |
|-------|------------|-------------|--------|
| SIZE | CAD FORMAT | DRAWING NO. | REV. |
| C | SOLIDWORKS | 107022-0048 | A |
| SCALE | MATERIAL | SEE BOM | SHEET |
| | | | 1 of 2 |

| SOCKET FOR DEVICES THAT ARE WITHIN THESE SPECIFICATIONS | | | | | |
|---|------------|-----------|--------------------------|------------|-------|
| Lead Count | N | 78 | Package Size | D | 7.50 |
| Columns | ND | 6 | | E | 10.60 |
| Rows | NE | 13 | Ball Spacing | D1 | 6.40 |
| Pitch | e | 0.80 | | E1 | 9.60 |
| Ball Size | b | 0.45±0.05 | Encapsulant/ Top Size | D2 | n/a |
| Total Thickness | A | N/A | | E2 | n/a |
| Ball Height | A1 | 0.275 Min | Pattern Style | Irregular* | |
| Substrate Thickness | A2 | N/A | Perimeter Rows | n/a | |
| Top Thickness | A3 | | Center Array | n/a | |
| Form Tolerances | | | | | |
| Edge | aaa | 0.20 | Bottom | ddd | 0.15 |
| Substrate | bbb | 0.20 | Position | eee | 0.20 |
| Top | ccc | 0.20 | Position | fff | 0.08 |

All dimensions are in millimeters.
*See footprint specification for pattern details.



| | | | |
|--|--------------------------|---|------------------|
| THE INFORMATION CONTAINED IN THIS DRAWING IS THE SOLE PROPERTY OF IRONWOOD ELECTRONICS, INC. ANY REPRODUCTION IN PART OR WHOLE WITHOUT THE WRITTEN PERMISSION OF IRONWOOD ELECTRONICS, INC. IS PROHIBITED. | | | |
| UNLESS OTHERWISE SPECIFIED - DIMENSIONS ARE IN MILLIMETERS - DIMS APPLY AFTER PLATING TOLERANCES UNLESS OTHERWISE NOTED: DECIMALS ANGLES X.X ±0.25 ±1° X.XX ±0.10 X.XXX ±0.050 | | IRONWOOD ELECTRONICS, INC 1335 EAGANDALE CT EAGAN, MN 55121. 952-229-2800 | |
| LEGEND: X NOTE CALLOUT A REVISION CHANGE X ITEM NUMBER | | TITLE SCKT, 78GRY7.5X10.6-0.80, DS | |
| SIZE C | CAD FORMAT SOLIDWORKS | DRAWING NO. 107022-0048 | REV. A |
| SCALE | MATERIAL | See Page 1 | |
| | | | SHEET 2 of 2 |