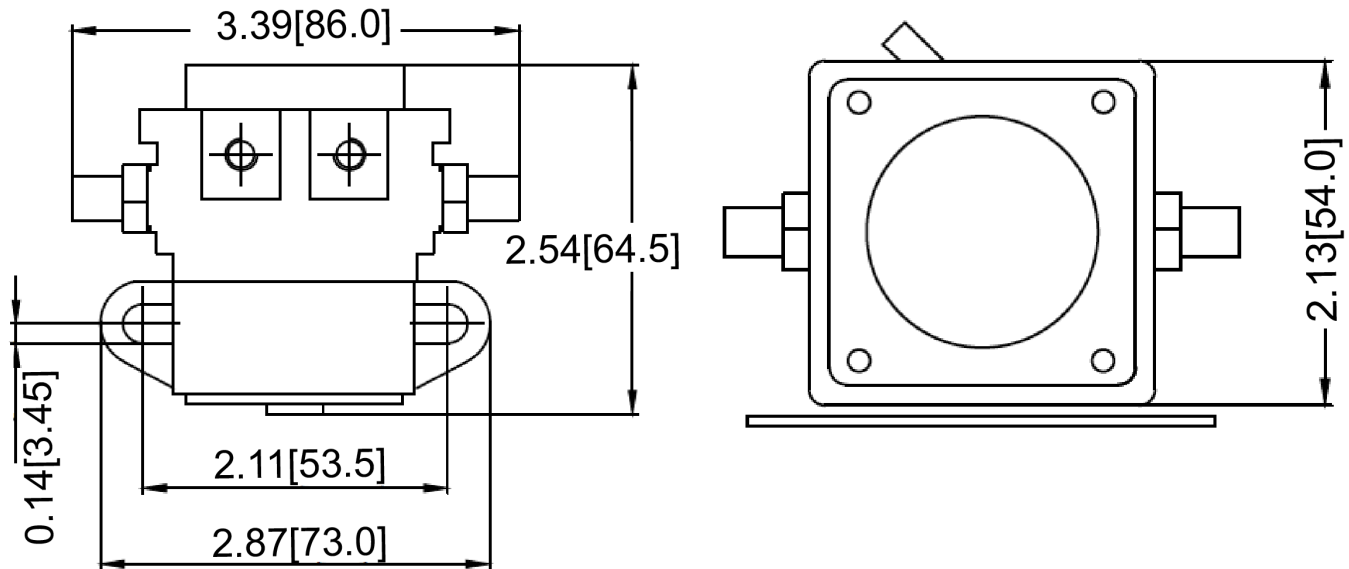


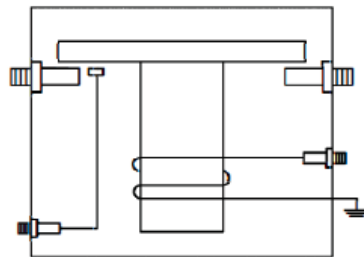
## Mechanical Dimensions: Inches [mm]

Tolerances  $\pm 0.012$  [0.5] Unless Otherwise Specified



## Circuit Diagram

Intermittent Duty. Grounded base



## Electrical Specifications

Make and Break Rating	12VDC 200A
Coil Resistance	$4 \pm 0.5$ Ohms
Operating Voltage	<10VDC
Release Voltage	>2.4VDC
Operation Temperature	-40°C~80°C

## Material Specifications

Phenolic body	
Copper terminals	
5/16"-18 Thread terminals with lock washers	
Mechanical Life	500,000
Electrical Life	50,000

Rev	Date of issue	Revision Notes	Designed	Approved
B	03-09-2020	Initial Drawing	RC	OF