

CORIO CD-1000F Refrigerated/Heating Circulator

The new generation of laboratory circulators for routine work and standard tasks

Refrigerated / Heating Circulators of the new CORIO™ series distinguish themselves with a great price-to-performance ratio. They are ideal for all standard tasks and routine work in laboratories and industry.

Your advantages

- Models for internal and external applications
- Bright, white, easy to read display
- Very quiet
- Easy pump change-over (internal and external circulation)
- External pump connections (M16x1)
- USB connection
- Space-saving cooling coil design yields more usable space in the bath tank
- Bath lid and drain tap included
- Removable ventilation grid
- Refrigeration unit without side vents
- Class III (FL) according to DIN 12876-1



Made
in Germany

Technical Data

| | | | | | | | | |
|--|------------------------------------|----|------|-----|------|-----|------|-----|
| Order No. | 9012707 | | | | | | | |
| Model series | CORIO | | | | | | | |
| Category | Refrigerated - Heating Circulators | | | | | | | |
| Working temperature range (°C) | -40 ... +150 | | | | | | | |
| Temperature control | PID | | | | | | | |
| Temperature stability (°C) | ±0.03 | | | | | | | |
| Setting / display resolution | 0.1 °C | | | | | | | |
| Temperature Display | LED | | | | | | | |
| Heating capacity (kW) | 1 | | | | | | | |
| Cooling capacity (Medium Ethanol) | °C | 20 | 10 | 0 | -10 | -20 | -30 | -40 |
| | kW | 1 | 0.95 | 0.9 | 0.73 | 0.5 | 0.25 | 0.1 |
| Pump capacity flow rate (l/min) | 15 | | | | | | | |
| Pump capacity flow pressure (psi) | 5.08 | | | | | | | |
| Bath opening / bath depth (W x L / D inch) | 8.7 x 5.9 / 7.9 | | | | | | | |
| Pump connections | M16x1 | | | | | | | |
| Barbed fittings diameter (inner dia. / mm) | 8 / 12 | | | | | | | |
| Filling volume liters | 5 ... 7.5 | | | | | | | |
| Refrigerant | R452A | | | | | | | |
| Ambient temperature | 5...40 °C | | | | | | | |
| Dimensions W x L x H (inch) | 16.5 x 19.3 x 27.6 | | | | | | | |
| Weight (LBS) | 113.5 | | | | | | | |

| | |
|----------------------------|---|
| Included with each unit | 2 each barbed fitting for tubing 8 and 12 mm inner dia. (pump connections M16x1 male) |
| Bath tank | Stainless steel |
| Bath cover | integrated |
| Cooling of compressor | Air |
| Available voltage versions | 230 V / 50 Hz 208 - 230 V / 60 Hz 115 V / 60 Hz 200 V / 50 - 60 Hz |

Characteristics



100% Checked.

100% testing. 100% quality. Each CORIO™ undergoes thorough quality testing before leaving the factory.



More bath.

Designed for more comfort. Thanks to the recessed cooling coil, the internal bath provides more space.



ATC.

Absolute Temperature Calibration, 1-point calibration (CD).



No sweat.

CORIO™ works robust and reliable – even at ambient temperatures of up to +40 °C.



Brilliant.

Bright display with strong illumination can be viewed easily from a long distance.



Quick start.

Individual JULABO consultation and comprehensive manuals at your disposal.



Cleaning. Easy.

Not only do the new units look good. The functional design makes cleaning a breeze.



Safety.

CORIO™ CD complies with Class III (FL) according to DIN 12876-1 and switches off automatically in case of high temperature or low liquid level alarm.



Click.

One for all. Control the circulator and the refrigeration unit with only one power switch.



Satisfied customers.

11 subsidiaries and more than 100 partners worldwide guarantee fast and qualified JULABO support.



Condensation protection.

Superb design solution. Integrated ventilation directs air over the bath lid and minimizes condensation.



Saves energy.

As you desire. Various modes for the refrigeration unit: permanently on, permanently off, or on as refrigeration is needed.



Connection. Easy.

Inclined pump connections (M16x1) facilitate the connection of applications. Each unit includes 2 barbed fittings of 8/12 mm diameter each.



Services 24/7.

Around the clock availability. You can find suitable accessories, data sheets, manuals, case studies, and more at www.julabo.com.



Everything at the front.

All operating controls and safety functions are accessed easily and comfortably from the front.



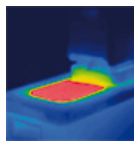
Soft. Quiet.

CORIO™ circulators are cushion mounted. Protects the electronics. Reduces operating noise and vibration.



Exact.

You can rely on it. PID1 control and 'Active Cooling Control' make the new CORIO™ precise and perfect.



Solid.

Minimized energy loss through high-quality insulation.



Green technology.

Development consistently applied environmentally friendly materials and technologies.



Space saving. Free up space.

Place your CORIO™ right next to an application, another unit, or wall. That saves space. This is made possible by eliminating vents and connections on the sides.



Handle with ease.

Makes day-to-day work easy. Comfortably move your CORIO™ around by using the ergonomic handles (front and rear).



Stable.

Rubber feet allow for a secured footing of your CORIO™ to prevent damage to your laboratory equipment.



Internal. External.

The pump is controlled via a lever located directly below the display. Easily change between internal and external circulation.



Switch on. And off you go.

Intelligent operating concept. Ready for operation with just a few quick and easy steps.



JULABO. Quality.

Highest standards of quality for a long product life.



Tidy.

The special drain tap for easy draining of bath fluids without tools.



Locked in.

The lockable power plug guarantees safe connection. More process safety.



Touching permitted.

Optimum safety. The ergonomic plastic handle protects your fingers from hot surfaces.



Maintenance. Friendly.

The front magnetic grid can be removed easily for user-friendly cleaning and maintenance. Without tools.



Unique.

Specially designed pyramids ensure that the condensed liquid drips directly back into the bath.



Mobile.

Extra easy handling. Integrated castors for easy repositioning of refrigerated circulators. (CD-600F, CD-601F, CD-900F, CD-1000F, CD-1001F)



USB.

Remote control made easy. CORIO™ CD circulators feature a USB connection.