



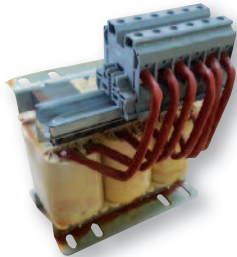
Datasheet 3/2019

Line reactor 480 Vac, 3% and 5% impedance, with high attenuation of current harmonic distortion and overvoltage spikes

APPROVALS:



UL1283
CSA C22.2



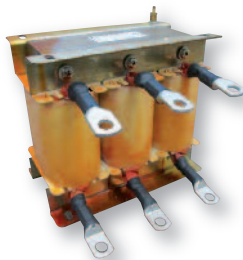
FINFF (terminal blocks)

FEATURES

- Rated current from 1 to 750A
- High differential mode attenuation
- Terminal blocks up to 180A

BENEFITS

- Various connections available
- Finger safe protection available
- Nema 1 and Nema 3R enclosures available



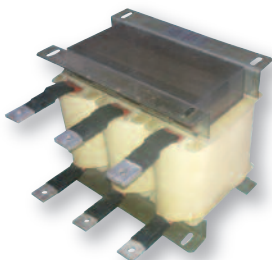
FINFF (lug connections)

MARKETS

- Variable frequency drives / servo drives
- Automated equipment
- Industrial automation
- Pumps

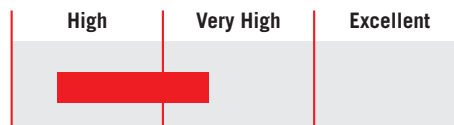
ORDERING CODE

| | | | |
|-------|----------------|-------------|-------------|
| FINFF | 020P1 | 01P1 | 0831 |
| Model | Inductance (L) | Current (A) | Internal ID |
| | 20.1 mH | 1.1A | |

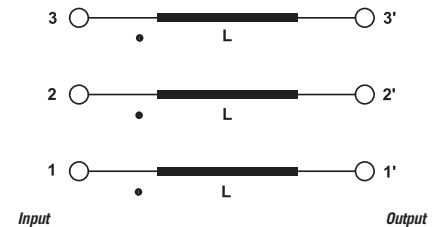


FINFF (bus-bar connections)

ATTENUATION INDICATOR



ELECTRIC DIAGRAM



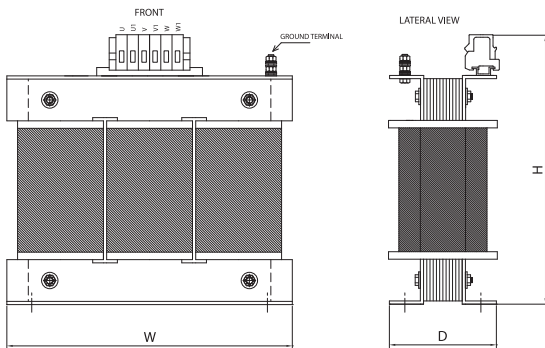
TECHNICAL SPECIFICATIONS

| | |
|--|------------------------------|
| Nominal voltage | 0 / 750 Vac |
| Frequency | 50 – 60 Hz |
| Rated current | 1 to 750A |
| Potential test voltage phase to phase | 2400 Vdc (2 sec.) |
| Potential test voltage phase to ground | 3200 Vdc (2 sec.) |
| Saturation current | 1.5 x I _n |
| Dielectric strength | 4 kV |
| IP Protection | IP20 up to 180A IPO0 over |
| Climatic class | -40 / +85° C |
| MTBF at 40°C | 250.000 Hrs. |

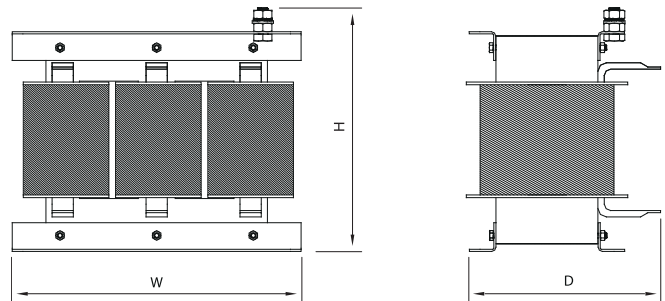
ELECTRICAL CHARACTERISTICS - MECHANICAL DIMENSIONS

| HP@480 Vac | Rated Current 40°C | FF 3% @480Vac | Open Frame Dimensions | | | Weight (Kg) | Case | Nema 1 Enclosure | FF 5% @480Vac | Open Frame Dimensions | | | Weight (Kg) | Case | Nema 1 Enclosure |
|------------|--------------------|------------------|-----------------------|-----|-----|-------------|------|------------------|-----------------|-----------------------|-----|-----|-------------|------|------------------|
| | | | H | W | D | | | | | H | W | D | | | |
| 0.5 | 1.1 | FF020P101P10831 | 120 | 120 | 90 | 1.6 | 1 | FINENCL.31 | FF033P501P10978 | 120 | 120 | 90 | 2 | 1 | FINENCL.31 |
| 0.75 | 1.6 | FF0013P901P60830 | 120 | 120 | 90 | 1.85 | 1 | FINENCL.31 | FF0002301P60979 | 120 | 120 | 90 | 2.1 | 1 | FINENCL.31 |
| 1 | 2.1 | FF010P602P10829 | 120 | 120 | 90 | 1.9 | 1 | FINENCL.31 | FF0001802P10980 | 120 | 120 | 90 | 2.5 | 1 | FINENCL.31 |
| 2 | 3.4 | FF006P503P40827 | 120 | 120 | 90 | 2 | 1 | FINENCL.31 | FF0001103P40981 | 120 | 120 | 90 | 2.8 | 1 | FINENCL.31 |
| 3 | 4.8 | FF004P604P80826 | 120 | 120 | 90 | 2.1 | 1 | FINENCL.31 | FF007P704P80982 | 160 | 160 | 120 | 4 | 1 | FINENCL.31 |
| 5 | 7.6 | FF02P9107P60832 | 165 | 160 | 120 | 4 | 1 | FINENCL.31 | FF04P8407P60983 | 160 | 160 | 120 | 4.5 | 1 | FINENCL.31 |
| 7.5 | 11 | FF02P0100110833 | 165 | 160 | 120 | 4 | 1 | FINENCL.31 | FF003P300110984 | 160 | 160 | 130 | 5.3 | 1 | FINENCL.31 |
| 10 | 14 | FF01P5800140834 | 165 | 160 | 130 | 4.7 | 1 | FINENCL.31 | FF002P600140985 | 160 | 160 | 130 | 5.5 | 1 | FINENCL.31 |
| 15 | 21 | FF01P0500210835 | 165 | 160 | 130 | 5 | 1 | FINENCL.31 | FF01P7600210986 | 180 | 180 | 130 | 8 | 1 | FINENCL.31 |
| 20 | 27 | FF00P8200340836 | 250 | 180 | 135 | 7.4 | 1 | FINENCL.31 | FF001P300270987 | 180 | 180 | 140 | 9 | 1 | FINENCL.41 |
| 25 | 34 | FF00P6400340837 | 250 | 180 | 135 | 7.6 | 1 | FINENCL.31 | FF001P200340988 | 300 | 240 | 145 | 12 | 1 | FINENCL.41 |
| 30 | 40 | FF00P5500400839 | 250 | 180 | 135 | 8 | 1 | FINENCL.31 | FF00P9800460989 | 300 | 240 | 145 | 12.5 | 1 | FINENCL.41 |
| 40 | 52 | FF00P3400650840 | 250 | 180 | 145 | 9 | 1 | FINENCL.41 | FF00P7500520990 | 300 | 240 | 145 | 13 | 1 | FINENCL.41 |
| 50 | 65 | FF00P3400650841 | 250 | 180 | 145 | 9 | 1 | FINENCL.41 | FFP566300651951 | 250 | 240 | 165 | 15 | 1 | FINENCL.41 |
| 60 | 83 | FF0P26800831002 | 300 | 240 | 150 | 14 | 1 | FINENCL.41 | FF00P5100830991 | 300 | 240 | 180 | 23 | 1 | FINENCL.41 |
| 75 | 104 | FF0P26301050976 | 300 | 240 | 180 | 22 | 1 | FINENCL.41 | FF0P37501040992 | 350 | 300 | 190 | 28 | 1 | FINENCL.51 |
| 100 | 130 | FF00P1701301003 | 300 | 240 | 185 | 23 | 1 | FINENCL.41 | FF000P301300993 | 350 | 300 | 190 | 28.5 | 2 | FINENCL.51 |
| 125 | 160 | FF00P1501600954 | 350 | 300 | 190 | 27 | 2 | FINENCL.61 | FF00P2601600994 | 300 | 300 | 210 | 33 | 2 | FINENCL.61 |
| 150 | 200 | FF0P11102001004 | 300 | 300 | 210 | 29 | 2 | FINENCL.61 | FF000P202000995 | 300 | 300 | 250 | 41 | 2 | FINENCL.61 |
| 200 | 250 | FF0P08902501005 | 300 | 300 | 220 | 33 | 2 | FINENCL.61 | FF0P17702501853 | 340 | 395 | 240 | 55 | 2 | FINENCL.61 |
| 250 | 322 | FFP068703221006 | 300 | 300 | 230 | 41 | 3 | FINENCL.61 | FFP135603251854 | 340 | 395 | 250 | 62 | 3 | FINENCL.61 |
| 300 | 414 | FFP053504141007 | 375 | 395 | 265 | 56 | 3 | FINENCL.81 | FF0P10604151855 | 340 | 395 | 260 | 80 | 3 | FINENCL.61 |
| 400 | 515 | FF0P04305151008 | 375 | 395 | 275 | 63 | 3 | FINENCL.81 | FFP085805151856 | 340 | 395 | 280 | 90 | 3 | FINENCL.101 |
| 475 | 600 | FFP036906001009 | 375 | 395 | 375 | 67 | 3 | FINENCL.101 | FFP073606001857 | 340 | 395 | 280 | 91 | 3 | FINENCL.101 |
| 600 | 750 | FFP029507501010 | 375 | 395 | 300 | 80 | 3 | FINENCL.101 | FF0P04907501858 | 400 | 480 | 350 | 120 | 3 | FINENCL.101 |

CASE 1



CASE 2



CASE 3

