

THIS COPY IS PROVIDED ON A RESTRICTED BASIS AND IS NOT TO BE USED IN ANY WAY DETRIMENTAL TO THE INTERESTS OF PANDUIT CORP.

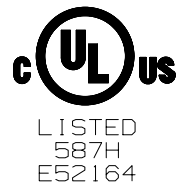
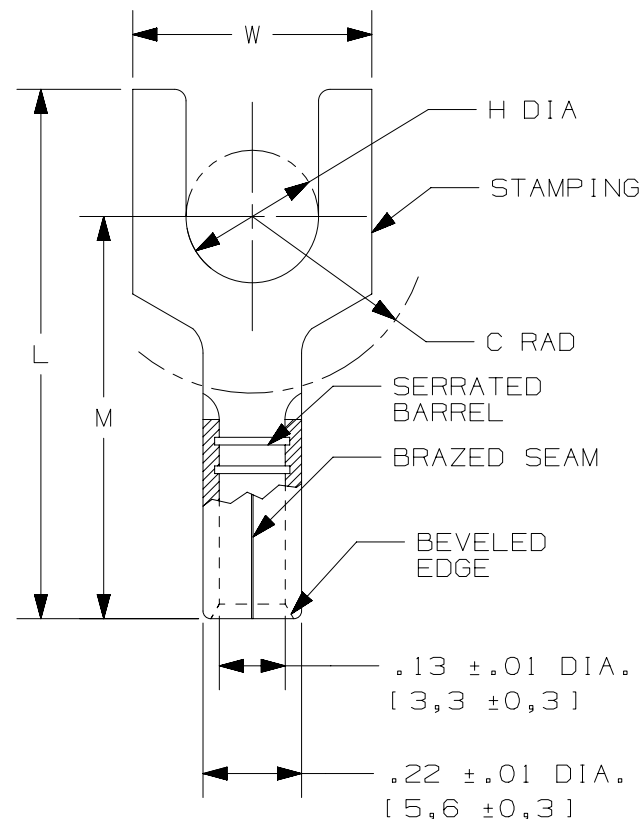
PANDUIT PART #	STUD SIZE		DIMENSIONS in. [mm]				
	ENGLISH	METRIC	L ± .03 [0,8]	W ± .01 [0,3]	C ± .015 [0,4]	M ± .03 [0,8]	H ± .01 [0,3]
P10-6F	#6	M3,5	.75 [19,1]	.31 [7,9]	.22 [5,6]	.55 [14,0]	.15 [3,8]
P10-8F	#8	M4	.78 [19,8]	.37 [9,4]	.22 [5,6]	.55 [14,0]	.17 [4,3]
P10-10F	#10	--	.78 [19,8]	.37 [9,4]	.23 [5,8]	.55 [14,0]	.20 [5,1]
PM6-5F*	--	M5	.76 [19,4]	.37 [9,4]	.28 [7,1]	.55 [14,0]	.21 [5,3]
P10-14F	1/4"	M6	.89 [22,6]	.50 [12,7]	.30 [7,6]	.60 [15,2]	.27 [6,9]

*NOT CSA CERTIFIED

NOTES:

- UL LISTED & CSA CERTIFIED FOR:
 - A. #12-10 AWG [4,0-6,0 mm²] SOLID OR STRANDED COPPER WIRE
 - B. 302°F [150°C] MAX. OPERATING TEMPERATURE
 - C. 2000 VOLTS MAX
- SEE www.panduit.com FOR PACKAGE QUANTITIES
- MATERIAL:
 - A. STAMPING: .04" [1,0] THK COPPER, TIN PLATED
- DIMENSIONS IN BRACKETS ARE METRIC EQUIVALENT
- WIRE STRIP LENGTH: 9/32" ^{+1/32}₋₀ [7,1mm ^{+0,8}₋₀]

UL & CSA TOOLS
CT-100A CT-200 CT-600-A (CT-570CH) CT-1570 CT-1701 (P10) CT-2500 (CT-2570CH)
PANDUIT APPROVED TOOLS
CT-160 CT-260



REV	DATE	BY	CHK	APR	DESCRIPTION	ECN
10	05/17	JHNU	TMR	RGB	ADDED CSA BACK TO DRAWING, UPDATED TOOL CHART FORMAT	N41256BB-A41256
09	06/14	MBY	JHNU	RGB	REVISED NOTES, MOVED TOOLS TO TABLE, REVISED CERTIFICATION	N41256BB-A41256
08	09.19.12	JBN	LCA	VMB	ADDED METRIC EQUIVALENT. REVISED NOTES. UPDATED TO CURRENT STANDARDS.	A41256

TITLE FORK, NON-INSULATED, #12-10					
CUSTOMER DRAWING					
ITEM REVISION NAME N41256BB/10	PANDUIT				
DATASET FILE NAME N41256BB_DC/10A					
UNLESS OTHERWISE SPECIFIED, DIMENSIONAL TOLERANCES ARE: IN [mm]					
<table border="0"> <tr> <td>.X ±</td> <td>.XXX ±</td> </tr> <tr> <td>.XX ±</td> <td>ANGLES ±</td> </tr> </table>		.X ±	.XXX ±	.XX ±	ANGLES ±
.X ±	.XXX ±				
.XX ±	ANGLES ±				
THIRD ANGLE PROJECTION					
MATERIAL: SEE NOTES					
DRAWING NUMBER: A41256					
DRAWN BY DAW	DATE				
CHK CJH	SCALE N.T.S.				
SHEET 1 OF 1					
SIZE A					