

NEWNEX PROPRIETARY

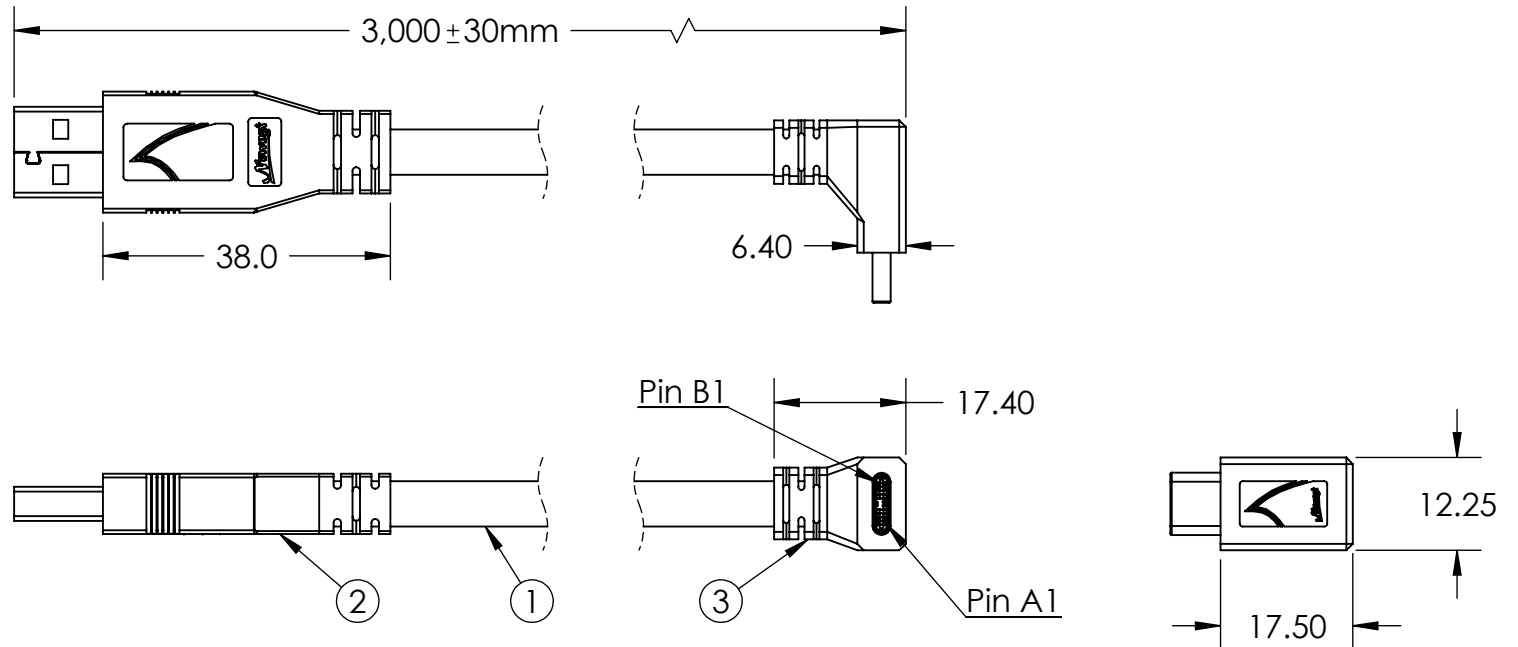
THIS DOCUMENT AND THE DATA DISCLOSED HEREIN OR WITHIN IS NOT TO BE REPRODUCED, USED, OR DISCLOSED IN WHOLE OR PART TO ANYONE WITHOUT THE WRITTEN PERMISSION OF NEWNEX

COMPANY NAME

CUSTOMER SIGNATURE

DATE

COMMENTS:



WIRING STRUCTURE			
Type C	SIGNAL NAME	A Male	
A4,B4,A9,B9	VBUS	1	
A5	CC	NC	
A7	Dn1	2	
A6	Dp1	3	
A1,B1,A12,B12	GND	4,7	
A3	SDPn1	5	
A2	SDPp1	6	
B10	SDPn2	8	
B11	SDPp2	9	
SHELL	Shield	SHELL	

Rp=56KΩ

Notes:

1. Cable: USB 3.0 Black PVC Jacket.
2. Connector: USB 3.1 A Male.
3. Connector: USB 3.1 Type C Down Angled Male with 56k Rp.
4. Packaging: 1 Piece + PE bag.

Newnex Technology Corp.



UNLESS OTHERWISE SPECIFIED DIMENSIONS ARE IN MILLIMETERS TOLERANCES ARE:

FRACTIONS DECIMALS ANGLES
 • NA X± 0.2 XX± 0.10 XXX± 0.050 ± 0.5°

PROJ: TITLE:

SCALE: 1:1 REV: A

USB 3.1 A Male to Angled Type C Male, 3M, Black.

DATE: 6/30/2021

DRAWN BY: XW

APPROVED BY:

PART NUMBER: U3S1A01C16-030

CHECKED BY:

SHEET 1 OF 1

REVISION COMMENTS: Drawing generated

*100% OPEN, SHORT, MISWIRE TESTING

*RoHS compliant product

*Both shell clam and copper foil have 360 degree contact with braiding