

NOTES :

1- MATERIAL:

- HOUSING: POLYESTER FIBER GLASS FILLED UL 94-V0
 COLOR BLACK.
- TERMINAL: PHOSPHOR BRONZE.

PLATING 1:

POST PLATE (0.00076)/.000030 MIN. GOLD IN CONTACT AREA
 (0.00190)/.000075 MIN. (90/10) TIN/LEAD IN TAIL AREA
 BOTH OVER (0.00127)/.000050 MIN. NICKEL OVERALL.

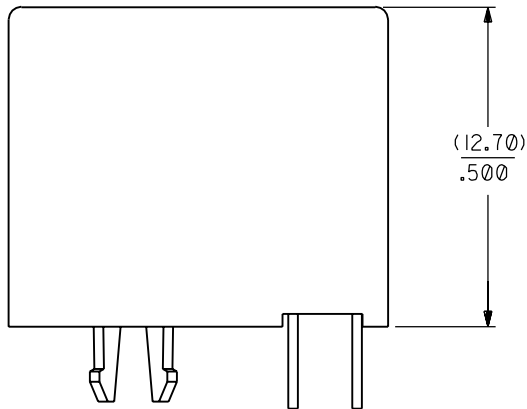
PLATING 2:

SAME AS PLATING 1 EXCEPT POST PLATE (0.00127-0.00152)/
 .000050-.000060 GOLD IN CONTACT AREA.

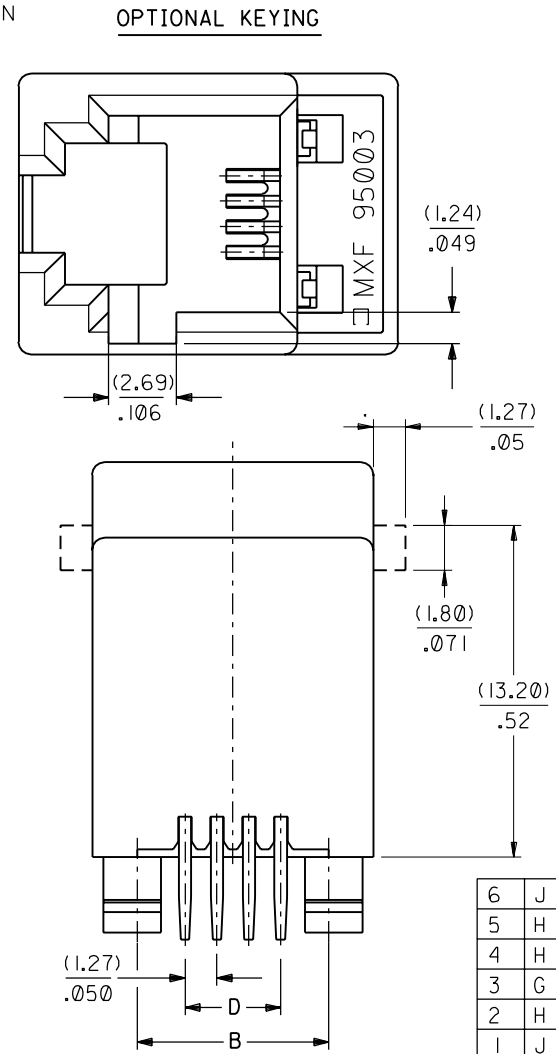
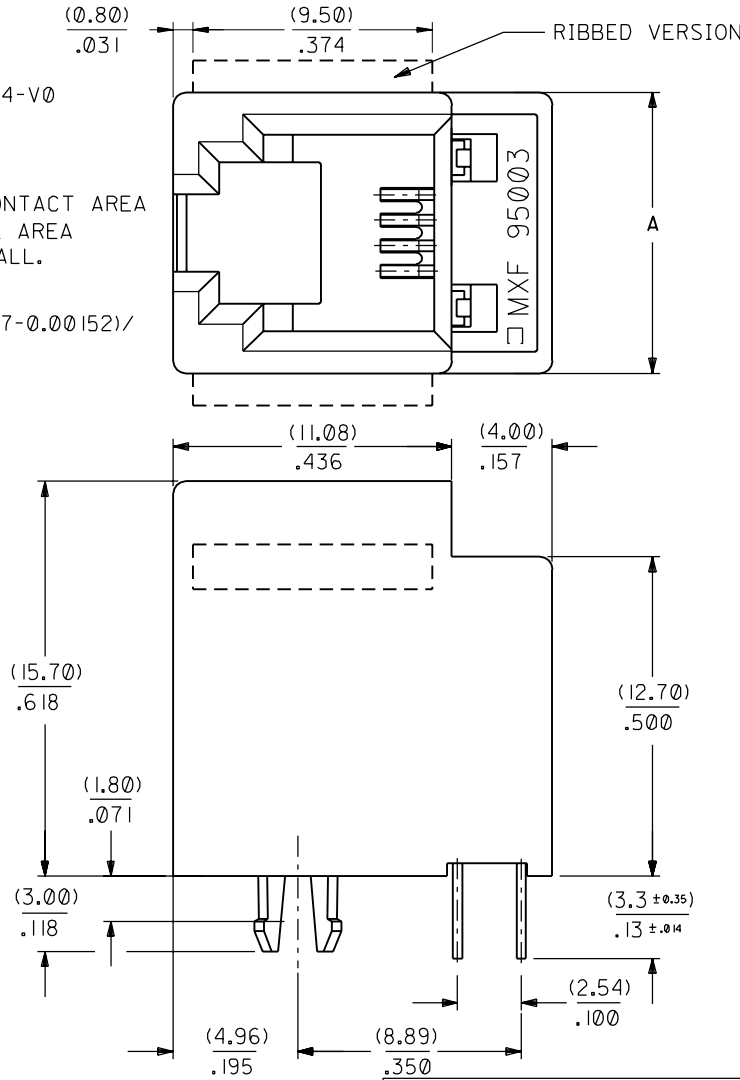
PLATING 3:

SAME AS PLATING 1 EXCEPT POST PLATE
 (0.00038)/.000015 GOLD IN CONTACT AREA.

- 2- JACK FOR MATING WITH F.C.C. 68 PLUGS
 90075 MOLEX SERIES.
- 3- PRODUCT SPECIFICATION PS-95003.
- 4- APPLICATION SPECIFICATION AS-95001.
- 5- PACKAGING SPECIFICATION PK-95003:
 - STANDARD PACKAGING SHEET 1.
 - TUBE PACKAGING FOR SMT VERSION SHEET 2.
 - TUBE PACKAGING FOR THROUGH HOLE VERSION SHEET 3.



SHORT VERSION



6	J
5	H
4	H
3	G
2	H
1	J

THIRD ANGLE PROJECTION		REVISE ONLY ON CAD SYSTEM		SH.	REV.
UNLESS OTHERWISE SPECIFIED TOLERANCES: ANGULAR ± 2°		CAD/CAM PROJECT NAME			
INCH METRIC		THIS DRAWING CONTAINS INFORMATION THAT IS PROPRIETARY TO MOLEX INC. & SHOULD NOT BE USED WITHOUT WRITTEN PERMISSION			
3 PLACE ± .006 ±		TITLE			
2 PLACE ± .010 ± 0.15		LOW PROFILE TOP ENTRY JACK (THROUGH HOLE VERSION)			
1 PLACE ± ± 0.25					
DRAFT WHERE APPLICABLE MUST REMAIN WITHIN DIMENSIONS		SHEET NO. DATE			
DESIGN DIMENSION <input checked="" type="checkbox"/> MM <input type="checkbox"/> IN.		molex MOLEX EUROPE 1 OF 6 95/05/15			
EQUIVALENT DIMENSION <input type="checkbox"/> MM <input checked="" type="checkbox"/> IN.		PART NO. DWG NO. SIZE			
TWO DIMENSIONS ARE SHOWN THE UPPER IS THE DESIGN DIMENSION, LOWER IS SECONDARY		5:1		SEE CHARTS SHT 4, 5, 6 SDA 95003-F B	

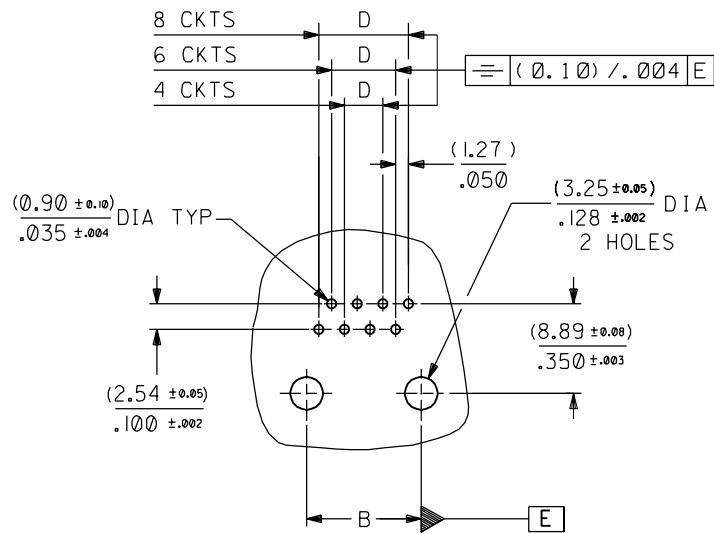
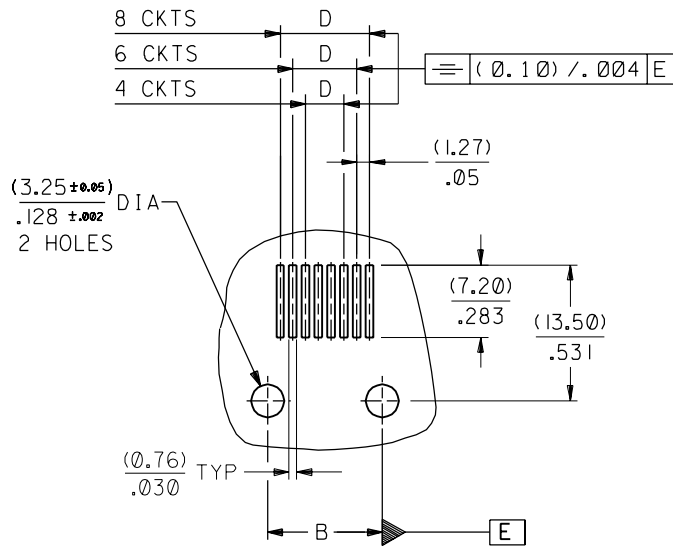
PART NO. SEE CHART SHT 4 & 5
 DWG. NO. SDA 95001-F

DIM. \ TYPE	POS. 4	POS. 6		POS. 8		
	4 CKTS.	4 CKTS.	6 CKTS.	4 CKTS.	6 CKTS.	8 CKTS.
A	(11.18) / .440	(13.21) / .520	(13.21) / .520	(15.24) / .600	(15.24) / .600	(15.24) / .600
B (± 0.05) / $\pm .002$	(7.62) / .300	(10.16) / .400	(10.16) / .400	(11.43) / .450	(11.43) / .450	(11.43) / .450
D (± 0.05) / $+.002$	(3.81) / .150	(3.81) / .150	(6.35) / .250	(3.81) / .150	(6.35) / .250	(8.89) / .350

P.C.B. MOUNTING PATTERNS - SEE FROM COMPONENT SIDE

FOR SMT JACK (SURFACE MOUNT)

FOR STANDARD JACK (THROUGH HOLE)



REVISE ONLY ON CAD SYSTEM SH. REV.

CAD/CAM FILENAME: S95003X3
 DGN
 THIS DRAWING CONTAINS INFORMATION THAT IS PROPRIETARY TO MOLEX INC. & SHOULD NOT BE USED WITHOUT WRITTEN PERMISSION

TITLE: LOW PROFILE TOP ENTRY JACK

MOLEX FRANCE SHEET NO. 3 OF 5 DATE 95/05/15

PART NO. SEE CHART SHT 4 & 5 DWG. NO. SDA 95003-F SIZE B

REDRAWN ON CAD SYST. ECN F50046 GP 95/05/15

DIMENSIONS SHOWN (METRIC) INCH
 UNLESS OTHERWISE SPECIFIED TOLERANCES: ANGULAR $\pm \frac{1}{2}^\circ$

	INCH	(METRIC)
3 PLACE	$\pm .006$	
2 PLACE	$\pm .010$	± 0.15
1 PLACE		± 0.25

DRAFT WHERE APPLICABLE MUST REMAIN WITHIN DIMENSIONS

DESIGN DIMENSION (MM) (PRIMARY) IN.

EQUIVALENT DIMENSION (MM) (SECONDARY) IN.

DRWG BY: GP
 CHK'D BY:
 APP'D BY:
 SCALE: 2:1

TRAY PACKAGING, SEE PACKAGING SPEC PK95003 SHEET 1

PART NO. SEE CHART
 DWG. NO. SDA 95003-F

PART NO FOR JACK ASSEMBLY
 THROUGH HOLE STANDARD VERSION

PART NO FOR JACK ASSEMBLY
 THROUGH HOLE SHORT VERSION

PART NO FOR JACK ASSEMBLY
 S.M.T. SHORT VERSION

HOUSING SIZE	LOADED CONTACTS	PLATING	POLYESTER FIBER GLASS FILED 94V0 COLOR BLACK					POLYESTER FIBER GLASS FILED 94V0 COLOR BLACK					POLYAMIDE 4/6 FIBER GLASS FILED 94V0 COLOR GREY					POLYAMIDE 4/6 FIBER GLASS FILED 94V0 COLOR BLACK									
			NO KEY	KEY				NO KEY	KEY				NO KEY	KEY				NO KEY	KEY								
			NO RIB	TOOLED	NO RIB	TOOLED	TOOLED	NO RIB	TOOLED	NO RIB	TOOLED	TOOLED	NO RIB	TOOLED	NO RIB	TOOLED	TOOLED	NO RIB	TOOLED	NO RIB	TOOLED	TOOLED					
4	4	1	95003-1441	X	95003-1442				95003-1444		95003-1445					95003-5444		95003-5445				95003-5454		95003-5455			
		2	95003-2441	X	95003-2442				95003-2444		95003-2445					95003-6444		95003-6445				95003-6454		95003-6455			
		3	95003-3441	X	95003-3442				95003-3444		95003-3445					95003-7444		95003-7445				95003-7454		95003-7455			
		4																									
6	4	1	95003-1641	X	95003-1642				95003-1644		95003-1645				95003-5644		95003-5645				95003-6644		95003-6645				
		2	95003-2641	X	95003-2642				95003-2644		95003-2645				95003-6644		95003-6645				95003-7644		95003-7645				
		3	95003-3641	X	95003-3642				95003-3644		95003-3645				95003-7644		95003-7645										
		4																									
6	6	1	95003-1661	X	95003-1662				95003-1664	X	95003-1665				95003-5664	X	95003-5665				95003-6664	X	95003-6665				
		2	95003-2661	X	95003-2662				95003-2664	X	95003-2665				95003-6664	X	95003-6665				95003-7664	X	95003-7665				
		3	95003-3661	X	95003-3662				95003-3664	X	95003-3665				95003-7664		95003-7665										
		4																									
8	4	1	95003-1841		95003-1842				95003-1844		95003-1845				95003-5844		95003-5845				95003-6844		95003-6845				
		2	95003-2841		95003-2842				95003-2844		95003-2845				95003-6844		95003-6845				95003-7844		95003-7845				
		3	95003-3841		95003-3842				95003-3844		95003-3845				95003-7844		95003-7845										
		4																									
8	6	1	95003-1861		95003-1862				95003-1864		95003-1865				95003-5864		95003-5865				95003-6864		95003-6865				
		2	95003-2861		95003-2862				95003-2864		95003-2865				95003-6864		95003-6865				95003-7864		95003-7865				
		3	95003-3861		95003-3862				95003-3864		95003-3865				95003-7864		95003-7865										
		4																									
8	8	1	95003-1881	X	95003-1882	X			95003-1884		95003-1885				95003-5884		95003-5885				95003-6884		95003-6885				
		2	95003-2881	X	95003-2882	X			95003-2884		95003-2885				95003-6884		95003-6885				95003-7884		95003-7885				
		3	95003-3881	X	95003-3882	X			95003-3884		95003-3885				95003-7884		95003-7885										
		4																									

TOOLED	<input checked="" type="checkbox"/>
NOT TOOLED	<input type="checkbox"/>

ECN F50056 GP 95/07/04	REDRAWN ON CAD SYST. ECN F50046 GP 95/05/15	REVISIONS	DIMENSIONS SHOWN (METRIC) INCH	DRWG BY GP	REVISE ONLY ON CAD SYSTEM		SH. REV.
			UNLESS OTHERWISE SPECIFIED TOLERANCES: ANGULAR ± 1/2°		CHK'D BY	CAD/CAM FILENAME S95003X4 DGN	
			INCH (METRIC)	APP'D BY	TITLE LOW PROFILE TOP ENTRY JACK THROUGH HOLE STANDARD VERSION, THROUGH HOLE & SMT SHORT VERSION		
			3 PLACE ± N.A.	SCALE	SHEET NO. DATE 4 OF 5 95/05/15		
			2 PLACE ± N.A. ± N.A.	N.A.	MOLEX MOLEX FRANCE		
			1 PLACE ± N.A.		PART NO. DWG NO. SIZE SEE CHART SDA 95003-F B		
			DRAFT WHERE APPLICABLE MUST REMAIN WITHIN DIMENSIONS				
			DESIGN DIMENSION (MM)				
			(PRIMARY) □ IN.				
			EQUIVALENT DIMENSION (MM)				
			(SECONDARY) □ IN.				