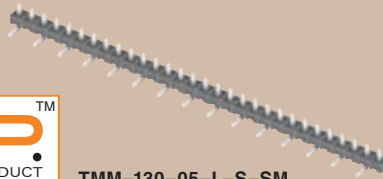


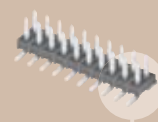
(2,00 mm) .0787"

TMM SERIES

TMM-110-01-T-D-SM



TMM-130-05-L-S-SM



TMM-112-01-F-S-SM

# LOW PROFILE SMT HEADER

## SPECIFICATIONS

For complete specifications and recommended PCB layouts see [www.samtec.com?TMM](http://www.samtec.com?TMM)

### Insulator Material:

Black Liquid Crystal Polymer  
Terminal Material: Phosphor Bronze



### Plating:

Sn or Au over 50µm (1,27 µm) Ni  
**Operating Temp Range:**  
-55°C to +105°C with Tin;  
-55°C to +125°C with Gold  
**Voltage Rating:**  
500 VAC mated with SQW  
450 VAC mated with SQT  
**RoHS Compliant:**  
Yes

### CURRENT RATING (PER CONTACT)

AMBIENT TEMP	Mated with SMM
20°C	3.9A
40°C	3.5A
60°C	3A
95°C	2A

6 POSITIONS (2x3) POWERED

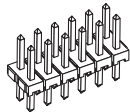
### Processing:

Lead-Free Solderable:  
Yes  
SMT Lead Coplanarity:  
(0,15 mm) .006" max

Mates with:  
CLT, SQT, SQW, ESQT,  
TLE, SMM, MMS,  
TCSD, TLD

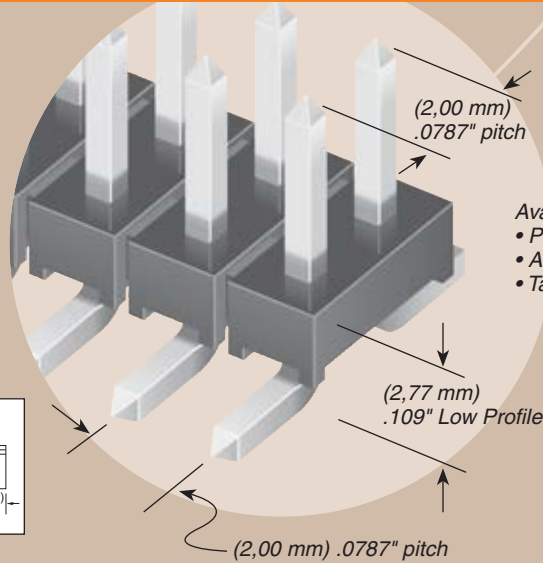
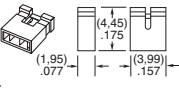
## ALSO AVAILABLE

Through-Hole



### 2 mm Shunt

Specify 2SN-BK-G for 2 mm shunt with Gold plating.



Available with optional  
• Pick & Place Pads  
• Alignment pins  
• Tape & reel packaging

TMM - 1 NO. PINS PER ROW - LEAD STYLE - PLATING OPTION - ROW OPTION - SM - OTHER OPTION

02 thru 40

Specify LEAD STYLE from chart below.

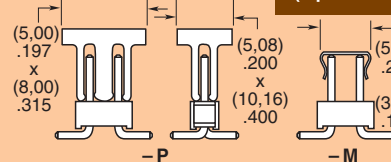
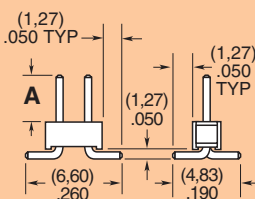
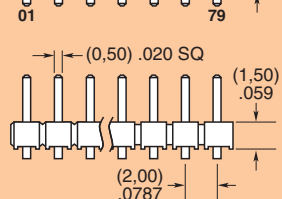
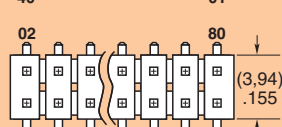
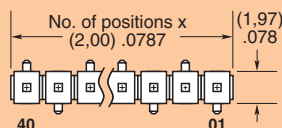
- F = Gold flash on post, Matte Tin on tail
- L = 10µm (0,25 µm) Gold on post, Matte Tin on tail
- S = 30µm (0,76 µm) Gold on post, Matte Tin on tail
- T = Matte Tin

- S = Single Row
- D = Double Row

- A = Alignment Pin (Metal or plastic at Samtec's discretion) (5 positions minimum) (-D only)
- “XXX” = Polarized Position (Specify position of omitted pin)
- M = Metal Pick & Place Pad (4 positions minimum) (-T plating not available) (-D only)
- P = Pick & Place Pad (3 positions minimum)
- TR = Tape & Reel Pkg. (3 positions minimum)

LEAD STYLE	A	MATES WITH
-01	(3,20) .126	SQT, SQW, ESQT, TLE, SMM, MMS, TCSD
-04	(1,91) .075	
-05	(1,65) .065	CLT
-06	(4,27) .168	CLT-BE

Note: Other Gold plating options available. Contact Samtec.



Note: Some lengths, styles and options are non-standard, non-returnable.

Due to technical progress, all designs, specifications and components are subject to change without notice.

WWW.SAMTEC.COM