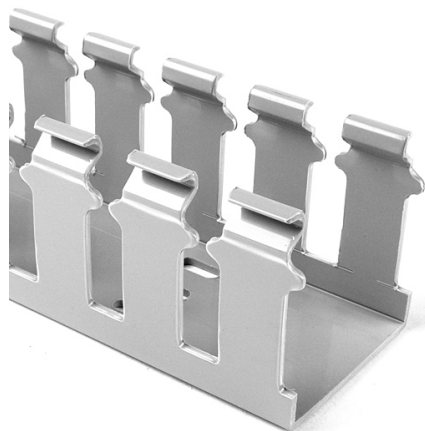


Specification Sheet

Part Number: 181-44033



Slotted Wall Wiring Duct, 4" x 4", Adhesive, PVC, Gray, 120ft/Carton

Article Number 181-44033

Type SLA4X4

Color Gray (GY)

Features & Benefits

- Strong fingers prevent unintended breaking.
- Fingers are easily deflected outward, allowing easier positioning of the wires.
- Restricted opening prevents unintended removal of wires and permits any individual wire to be traced without disconnection.
- Nonpermanent adhesive allows repositioning prior to final installation.
- Optional covers snap on and off easily, and their nonslip lining ensures they stay in place even under vibration.

Quantity Per carton

Product Description	HellermannTyton Slotted Wall Duct features breakaway fingers that provide additional access for wire leads. Each section of the duct is provided with two score lines. The upper score line is used to break away fingers when a wider opening is required. The lower score line allows the sidewall to be smoothly cut for joints and Ts. Pressure-sensitive, rubber-based adhesive backing aids in temporary positioning.
Short Description	Slotted Wall Wiring Duct, 4" x 4", Adhesive, PVC, Gray, 120ft/Carton
Global Part Name	SLA4X4-PVC-GY
Technical Description	Adhesive
Length L (Imperial)	6.0
Length L (Metric)	1.83
Width W (Imperial)	4.0
Width W (Metric)	101.6
Height H (Imperial)	4.07
Height H (Metric)	103.4
Mounting Hole Centers (Imperial)	4.0
Material	Polyvinylchloride (PVC)

Material Shortcut	PVC
Flammability	Self-Extinguishing
Halogen free	No
Operating Temperature (Metric)	+122°F (+50°C)
Reach Complaint(Article 33)	No
ROHS Complaint	Yes
Certification/Specification WEB	EN 50085-1:2005 + A1:2013 UL EN 50085-2-3_1A CSA
UL Recognized (US)	Yes
Package Quantity(Imperial)	120
Package Quantity (Metric)	36.58
Customs Number	3925900000