



Search Results

- Evaluate
 - FAQ's
- Design a Solution
 - Part Drawings
 - PDF-Next Generat ..
- How to Buy
 - Bill of Material
 - Favorite Products List
 - Locate Distributor

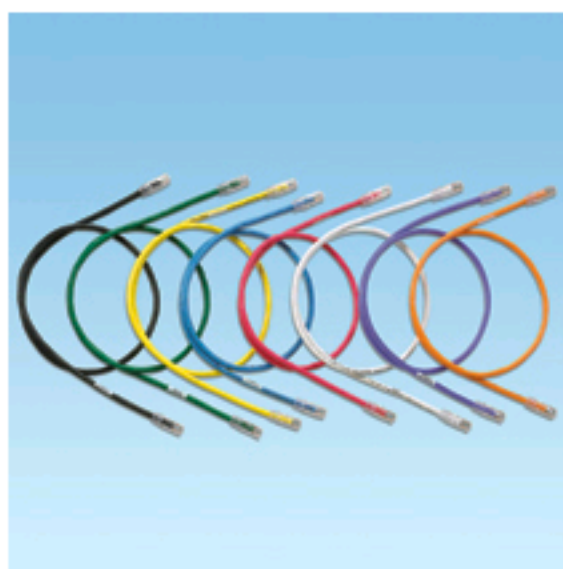
Home > Product On-Line Catalog > Search Results >

Current refinements (click to remove) Search Tips

Text Search: 'UTP6A5RD'

Your search criteria matched only one product, shown below

UTP6A5RD



- Exceed requirements of ANSI/TIA-568-C.2 Category 6A, IEEE 802.3an-2006, and ISO 11801 Class E_A channel standards
- Meet requirements of IEEE 802.3af and IEEE 802.3at for PoE applications
- Each patch cord is 100% performance tested and wired to T568B
- Constructed of TX6A™ 10Gig™ 24 AWG stranded copper cable (nominal cable diameter is 0.280 inches) and TX6™ PLUS Modular Plugs for superior performance
- Plug meets all applicable ANSI/TIA-968-A requirements and exceeds IEC 60603-7 specifications
- Slender strain relief boot provides easy access in high density applications
- Plug uses an integral pair manager to optimize performance and consistency by reducing untwisting of conductors within the plug
- Plug performance in center of TIA/EIA component range, ensuring interoperability and 10GBASE-T Ethernet channel performance
- Labels on patch cords provide identification of performance level, length, and quality control

number

- Patented tangle free latch prevents snags and provides easy release, saving time on frequent moves, adds, and changes
- Optional Patch Cord Color Bands snap on and off individual patch cables offering endless color-coding options

| | |
|--------------------------------|---|
| ▪ Part Number | UTP6A5RD |
| ▪ RoHS Compliancy Status | Compliant |
| ▪ Part Description | Category 6A, 10 Gb/s UTP patch cord with TX6™ PLUS Modular Plugs on each end. |
| ▪ Product Type | Copper Patch Cord |
| ▪ Color | Red |
| ▪ Length (ft.) | 5 |
| ▪ Length (m) | 1.52 |
| ▪ Boot Color | Clear |
| ▪ Cable Color | Red |
| ▪ Cable Type | UTP |
| ▪ CE Compliant | No |
| ▪ Connector 1 Type | RJ45 8(8) |
| ▪ Connector 2 Type | RJ45 8(8) |
| ▪ Flammability Rating | CM |
| ▪ Performance Level | Category 6A |
| ▪ Pricing Description | Copper Patch Cord, Cat 6A, Red UTP Cable, 5 Feet |
| ▪ Termination End 1 | Modular Plug |
| ▪ Termination End 2 | Modular Plug |
| ▪ Wiring Scheme | T568B |
| ▪ Min. Order UOM | PC |
| ▪ Min. Order Qty. | 1 |
| ▪ BOM Qty. (# of Pkgs.) | <input type="text" value="0"/> |
| ▪ Add to Favorite Product List | <input type="checkbox"/> |

Please [register](#) to utilize the 'Bill of Materials', 'Submit Quotes' and 'Favorite Product List' features.