

D-Subminiature Commercial Metal Shell

.109" (2.77mm) Density
Crimp And Poke Econo D
D*U/C Series

CINCH

Features

- Available in 5 connector sizes: 9, 15, 25, 37, and 50, with crimp and poke terminations, both plug and socket styles
- Intermateable with all D-Subminiature connectors of comparable pin count and complying dimensionally with MIL-C-24308
- UL Recognized file no. E19071
- Variety of shell styles available
- Grounding indents available on tin plated plugs
- Available in alternate shell construction for compatibility with plastic backshell not manufactured by Cinch

Performance Data

Materials

Insulation Material: UL 94V-0 rated molded glass-filled nylon; black

Contact Material:

Machined Contacts:

Plug: Brass

Socket: Phosphor bronze

Stamped Contacts: Phosphor bronze

Contact Plating: Gold flash over nickel or gold flash over nickel with additional 30 μ inches of gold in mating area

Shell Material: Steel

Shell Plating: Zinc with yellow chromate coating or bright tin

Electrical Characteristics

Withstanding Voltage: 1000 VAC rms (@ sea level)

Current Rating: 5 Amps

Contact Resistance: 2.7 Milliohms maximum

Insulation Resistance: 5000 Megohms minimum

Mechanical Characteristics

Individual Contact Insertion and Separation Force: 0.7 oz. (20g) minimum, 12 oz. (341g) maximum

Environmental Characteristics

Shock: Exceeds test requirements of MIL-STD-202D, Method 213, Condition G

Operating Temperature: - 65°C to + 125°C

Vibration: Exceeds requirements of MIL-STD-202D, Method 204, Condition D

Humidity: Exceeds requirements of MIL-STD-202D, Method 106

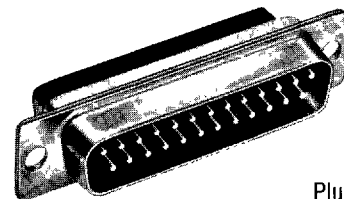
Accessories

For metal shell D-Subminiature Connector accessories see pages 34 through 45.

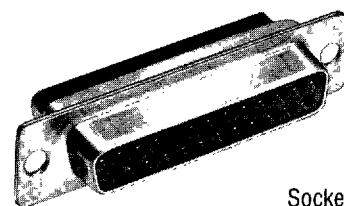
Tools

See pages 46-49 for termination tools.

NOTE: D*U and D*C reference information is given in the ordering information section. Both styles are UL recognized and there is no difference between D*U and D*C connectors except for the reference number. Use of the D*U reference when ordering these connectors is preferred.

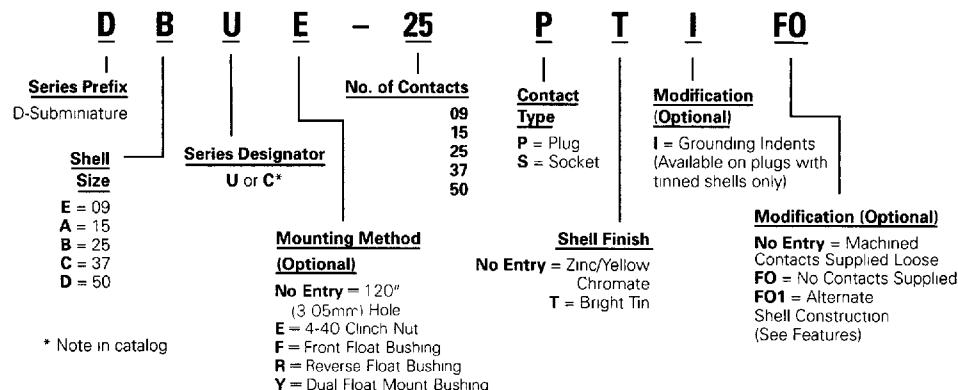


Plug



Socket

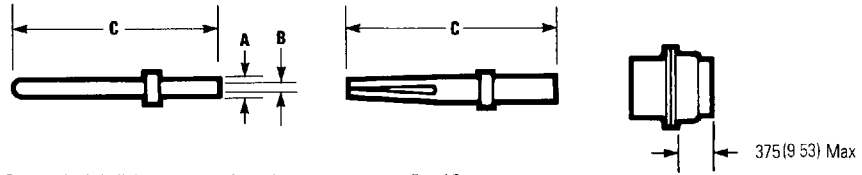
Ordering Information



D-Subminiature Commercial Metal Shell

.109" (2.77mm) Density Crimp And Poke Econo D D*U/C Series

Dimensions

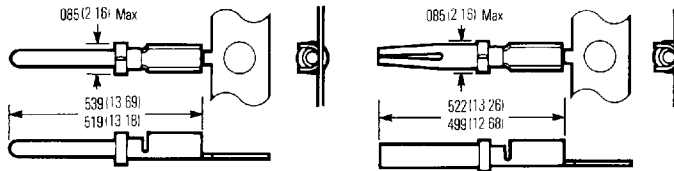


For standard shell dimensions and panel cutouts, see pages 5 and 6

Crimp And Poke Contacts Machined Contacts

Description	Wire AWG	A ±.002" (.05mm)		B ±.002" (.05mm)		C Max.	
		in	mm	in	mm	in	mm
Pin 20	#20, 22, 24	067	1.70	042	1.07	537	13.64
Socket 20	#20, 22, 24	067	1.70	042	1.07	523	13.28

Machined contacts are supplied loose for use with hand crimping tools



Stamped Contacts

Stamped contacts are supplied on reels for use with semi-automatic crimping machines. Available with gold flash or selective gold plating and gold flash

overall, these contacts will accommodate wire sizes #20 through #28 AWG by adjusting or changing the crimp die set.

Ordering Information

Machined Contacts

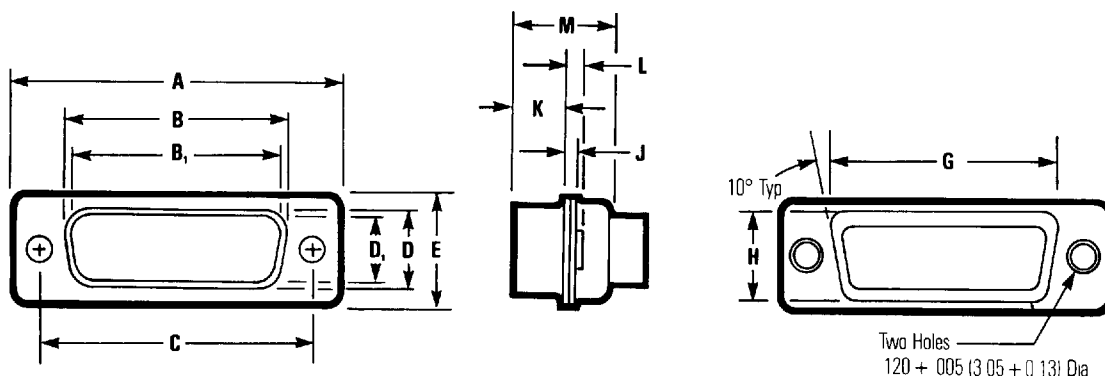
Description	Part No.
Pin 20	030-1952-000
Socket 20	030-1953-000

Stamped Contacts Gold Flash

Type (LH)	Part No.
Pin	BCL-1964-20P
Socket	BCL-1963-20S

Selective Gold Plating With Gold Flash Overall

Type (LH)	Part No.
Pin	D110238-034
Socket	D110238-035



Mating Side

Termination Side

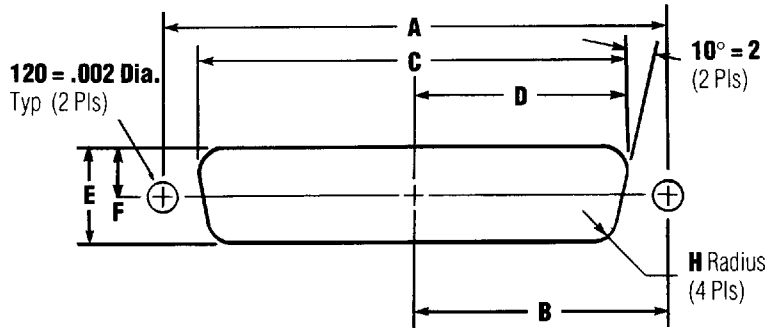
Dimensions

Shell Size	Connector Type	A ± .015" (0.38mm)		B ± .010" (0.25mm)		B ₁ ± .005" (0.13mm)		C ± .005" (0.13mm)		D ± .010" (0.25mm)		D ₁ ± .010" (0.25mm)		E ± .015" (0.38mm)	
		in	mm	in	mm	in	mm	in	mm	in	mm	in	mm	in	mm
E	Plug	1.213	30.81	—	—	.666	16.90	.0984	24.99	—	.840	.329	—	.494	12.55
	Socket	1.213	30.81	.640	16.26	—	—	.0984	24.99	.308	—	—	.782	.494	12.55
A	Plug	1.541	39.14	—	—	.994	25.30	1.312	33.32	—	.840	.329	—	.494	12.55
	Socket	1.541	39.14	.968	24.59	—	—	1.312	33.32	.308	—	—	.782	.494	12.55
B	Plug	2.088	53.04	—	—	1.534	39.00	1.852	47.04	—	.840	.329	—	.494	12.55
	Socket	2.088	53.04	1.508	38.30	—	—	1.852	47.04	.308	—	—	.782	.494	12.55
C	Plug	2.729	69.32	—	—	2.182	55.40	2.500	63.50	—	.840	.329	—	.494	12.55
	Socket	2.729	69.32	2.156	54.76	—	—	2.500	63.50	.308	—	—	.782	.494	12.55
D	Plug	2.635	66.93	—	—	2.079	52.80	2.406	61.11	—	1.107	.436	—	.605	15.37
	Socket	2.635	66.93	2.062	52.34	—	—	2.406	61.11	.420	—	—	1.067	.605	15.37

Shell Size	Connector Type	G ± .010" (0.25mm)		H ± .010" (0.25mm)		J ± .010" (0.25mm)		K ± .010" (0.25mm)		L ± .010" (0.25mm)		M ± .010" (0.25mm)	
		in	mm	in	mm	in	mm	in	mm	in	mm	in	mm
E	Plug	.759	19.28	.422	10.72	.030	0.76	.236	5.99	.045	1.14	.422	10.72
	Socket	.759	19.28	.422	10.72	.030	0.76	.243	6.17	.045	1.14	.429	10.92
A	Plug	1.083	27.51	.422	10.72	.030	0.76	.236	5.99	.045	1.14	.422	10.72
	Socket	1.083	27.51	.422	10.72	.030	0.76	.243	6.17	.045	1.14	.429	10.92
B	Plug	1.625	41.27	.422	10.72	.039	0.99	.231	5.87	.060	1.52	.426	10.82
	Socket	1.625	41.27	.422	10.72	.030	0.76	.243	6.17	.045	1.14	.429	10.92
C	Plug	2.272	57.71	.422	10.72	.039	0.99	.231	5.87	.060	1.52	.426	10.82
	Socket	2.272	57.71	.422	10.72	.030	0.76	.243	6.17	.045	1.14	.429	10.92
D	Plug	2.178	55.32	.534	13.56	.039	0.99	.231	5.87	.060	1.52	.426	10.82
	Socket	2.178	55.32	.534	13.56	.030	0.76	.243	6.17	.045	1.14	.429	10.92

B and D are outside dimensions for socket. B₁ and D₁ are inside dimensions for plug

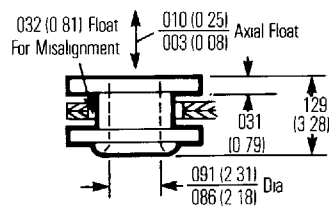
Panel Mounting Specifications



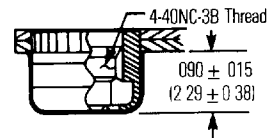
Dimensions

Shell Size	Mounting Method Front/Rear Panel	Dimensions (inches)						
		A	B	C	D	E	F	H
E	Front	0.98	0.49	0.87	0.44	0.51	0.26	0.08
	Rear	0.98	0.49	0.81	0.40	0.45	0.23	0.13
A	Front	1.31	0.66	1.10	0.60	0.51	0.26	0.08
	Rear	1.31	0.66	1.13	0.57	0.45	0.23	0.13
B	Front	1.85	0.93	1.74	0.87	0.51	0.26	0.08
	Rear	1.85	0.93	1.67	0.84	0.45	0.23	0.13
C	Front	2.50	1.25	2.39	1.20	0.51	0.26	0.08
	Rear	2.50	1.25	2.33	1.16	0.45	0.23	0.13
D	Front	2.41	1.20	2.30	1.15	0.62	0.31	0.08
	Rear	2.41	1.20	2.22	1.11	0.56	0.28	0.13

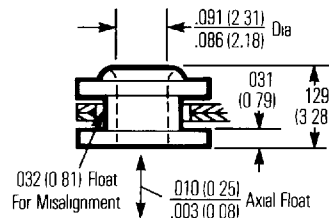
Float Bushing



4-40 Clinch Nut



Reverse Float Bushing



Floating Dual Bushing

