

# Low-Halide Polyester (B-569)

For labeling stainless steel and smooth surfaces.

- Low-halide content for labeling stainless steel pipes and surfaces
- Applies best to very smooth surfaces and ideal for mounting to rigid panels

Service temp: -40°F to 212°F Application temp: 0°F to 212°F  
Average Outdoor Durability: 3-5 years

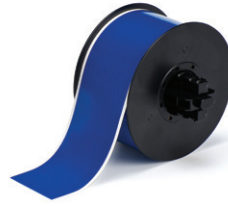
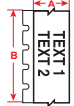


Figure 33



Fits Printer Model(s)	Diagram	Catalog #	Color	Label Width A Inch (mm)	Roll Length B Inch (mm)	Labels Per Roll	Rec. Ribbon
BBP31, BBP33	Fig. 33	B30C-500-569-CL	Clear	0.500 (12.7)	100ft. (30.5m)	- continuous supply -	B30-R10000
BBP31, BBP33	Fig. 33	B30C-1125-569-CL	Clear	1.125 (28.6)	100ft. (30.5m)	- continuous supply -	B30-R10000
BBP31, BBP33	Fig. 33	B30C-2250-569-CL	Clear	2.250 (57.5)	100ft. (30.5m)	- continuous supply -	B30-R10000
BBP31, BBP33	Fig. 33	B30C-4000-569-CL	Clear	4.000 (101.6)	100ft. (30.5m)	- continuous supply -	B30-R10000
BBP31, BBP33	Fig. 33	B30C-500-569-WT	White	0.500 (12.7)	100ft. (30.5m)	- continuous supply -	B30-R10000
BBP31, BBP33	Fig. 33	B30C-1125-569-WT	White	1.125 (28.6)	100ft. (30.5m)	- continuous supply -	B30-R10000
BBP31, BBP33	Fig. 33	B30C-2250-569-WT	White	2.250 (57.5)	100ft. (30.5m)	- continuous supply -	B30-R10000
BBP31, BBP33	Fig. 33	B30C-3000-569-WT	White	3.000 (76.2)	100ft. (30.5m)	- continuous supply -	B30-R10000
BBP31, BBP33	Fig. 33	B30C-4000-569-WT	White	4.000 (101.6)	100ft. (30.5m)	- continuous supply -	B30-R10000
BBP31, BBP33	Fig. 33	B30C-500-569-YL	Yellow	0.500 (12.7)	100ft. (30.5m)	- continuous supply -	B30-R10000
BBP31, BBP33	Fig. 33	B30C-1125-569-YL	Yellow	1.125 (28.6)	100ft. (30.5m)	- continuous supply -	B30-R10000
BBP31, BBP33	Fig. 33	B30C-2250-569-YL	Yellow	2.250 (57.5)	100ft. (30.5m)	- continuous supply -	B30-R10000
BBP31, BBP33	Fig. 33	B30C-4000-569-YL	Yellow	4.000 (101.6)	100ft. (30.5m)	- continuous supply -	B30-R10000
BBP31, BBP33	Fig. 33	B30C-500-569-RD	Red	0.500 (12.7)	100ft. (30.5m)	- continuous supply -	B30-R10000
BBP31, BBP33	Fig. 33	B30C-1125-569-RD	Red	1.125 (28.6)	100ft. (30.5m)	- continuous supply -	B30-R10000
BBP31, BBP33	Fig. 33	B30C-2250-569-RD	Red	2.250 (57.5)	100ft. (30.5m)	- continuous supply -	B30-R10000
BBP31, BBP33	Fig. 33	B30C-4000-569-RD	Red	4.000 (101.6)	100ft. (30.5m)	- continuous supply -	B30-R10000
BBP31, BBP33	Fig. 33	B30C-500-569-BL	Blue	0.500 (12.7)	100ft. (30.5m)	- continuous supply -	B30-R10000
BBP31, BBP33	Fig. 33	B30C-1125-569-BL	Blue	1.125 (28.6)	100ft. (30.5m)	- continuous supply -	B30-R10000
BBP31, BBP33	Fig. 33	B30C-2250-569-BL	Blue	2.250 (57.5)	100ft. (30.5m)	- continuous supply -	B30-R10000
BBP31, BBP33	Fig. 33	B30C-4000-569-BL	Blue	4.000 (101.6)	100ft. (30.5m)	- continuous supply -	B30-R10000
BBP31, BBP33	Fig. 33	B30C-500-569-LB	Light Blue	0.500 (12.7)	100ft. (30.5m)	- continuous supply -	B30-R10000
BBP31, BBP33	Fig. 33	B30C-1125-569-LB	Light Blue	1.125 (28.6)	100ft. (30.5m)	- continuous supply -	B30-R10000
BBP31, BBP33	Fig. 33	B30C-2250-569-LB	Light Blue	2.250 (57.5)	100ft. (30.5m)	- continuous supply -	B30-R10000
BBP31, BBP33	Fig. 33	B30C-4000-569-LB	Light Blue	4.000 (101.6)	100ft. (30.5m)	- continuous supply -	B30-R10000
BBP31, BBP33	Fig. 33	B30C-500-569-SB	Sky Blue	0.500 (12.7)	100ft. (30.5m)	- continuous supply -	B30-R10000
BBP31, BBP33	Fig. 33	B30C-1125-569-SB	Sky Blue	1.125 (28.6)	100ft. (30.5m)	- continuous supply -	B30-R10000
BBP31, BBP33	Fig. 33	B30C-2250-569-SB	Sky Blue	2.250 (57.5)	100ft. (30.5m)	- continuous supply -	B30-R10000
BBP31, BBP33	Fig. 33	B30C-4000-569-SB	Sky Blue	4.000 (101.6)	100ft. (30.5m)	- continuous supply -	B30-R10000
BBP31, BBP33	Fig. 33	B30C-500-569-GN	Green	0.500 (12.7)	100ft. (30.5m)	- continuous supply -	B30-R10000
BBP31, BBP33	Fig. 33	B30C-1125-569-GN	Green	1.125 (28.6)	100ft. (30.5m)	- continuous supply -	B30-R10000
BBP31, BBP33	Fig. 33	B30C-2250-569-GN	Green	2.250 (57.5)	100ft. (30.5m)	- continuous supply -	B30-R10000
BBP31, BBP33	Fig. 33	B30C-4000-569-GN	Green	4.000 (101.6)	100ft. (30.5m)	- continuous supply -	B30-R10000
BBP31, BBP33	Fig. 33	B30C-500-569-OR	Orange	0.500 (12.7)	100ft. (30.5m)	- continuous supply -	B30-R10000
BBP31, BBP33	Fig. 33	B30C-1125-569-OR	Orange	1.125 (28.6)	100ft. (30.5m)	- continuous supply -	B30-R10000
BBP31, BBP33	Fig. 33	B30C-2250-569-OR	Orange	2.250 (57.5)	100ft. (30.5m)	- continuous supply -	B30-R10000
BBP31, BBP33	Fig. 33	B30C-4000-569-OR	Orange	4.000 (101.6)	100ft. (30.5m)	- continuous supply -	B30-R10000
BBP31, BBP33	Fig. 33	B30C-500-569-BK	Black	0.500 (12.7)	100ft. (30.5m)	- continuous supply -	B30-R10000
BBP31, BBP33	Fig. 33	B30C-1125-569-BK	Black	1.125 (28.6)	100ft. (30.5m)	- continuous supply -	B30-R10000
BBP31, BBP33	Fig. 33	B30C-2250-569-BK	Black	2.250 (57.5)	100ft. (30.5m)	- continuous supply -	B30-R10000
BBP31, BBP33	Fig. 33	B30C-4000-569-BK	Black	4.000 (101.6)	100ft. (30.5m)	- continuous supply -	B30-R10000
BBP31, BBP33	Fig. 33	B30C-500-569-BR	Brown	0.500 (12.7)	100ft. (30.5m)	- continuous supply -	B30-R10000
BBP31, BBP33	Fig. 33	B30C-1125-569-BR	Brown	1.125 (28.6)	100ft. (30.5m)	- continuous supply -	B30-R10000
BBP31, BBP33	Fig. 33	B30C-2250-569-BR	Brown	2.250 (57.5)	100ft. (30.5m)	- continuous supply -	B30-R10000
BBP31, BBP33	Fig. 33	B30C-4000-569-BR	Brown	4.000 (101.6)	100ft. (30.5m)	- continuous supply -	B30-R10000
BBP31, BBP33	Fig. 33	B30C-500-569-OC	Ochre	0.500 (12.7)	100ft. (30.5m)	- continuous supply -	B30-R10000
BBP31, BBP33	Fig. 33	B30C-1125-569-OC	Ochre	1.125 (28.6)	100ft. (30.5m)	- continuous supply -	B30-R10000
BBP31, BBP33	Fig. 33	B30C-2250-569-OC	Ochre	2.250 (57.5)	100ft. (30.5m)	- continuous supply -	B30-R10000
BBP31, BBP33	Fig. 33	B30C-4000-569-OC	Ochre	4.000 (101.6)	100ft. (30.5m)	- continuous supply -	B30-R10000
BBP31, BBP33	Fig. 33	B30C-500-569-TN	Tan	0.500 (12.7)	100ft. (30.5m)	- continuous supply -	B30-R10000
BBP31, BBP33	Fig. 33	B30C-1125-569-TN	Tan	1.125 (28.6)	100ft. (30.5m)	- continuous supply -	B30-R10000
BBP31, BBP33	Fig. 33	B30C-2250-569-TN	Tan	2.250 (57.5)	100ft. (30.5m)	- continuous supply -	B30-R10000
BBP31, BBP33	Fig. 33	B30C-4000-569-TN	Tan	4.000 (101.6)	100ft. (30.5m)	- continuous supply -	B30-R10000