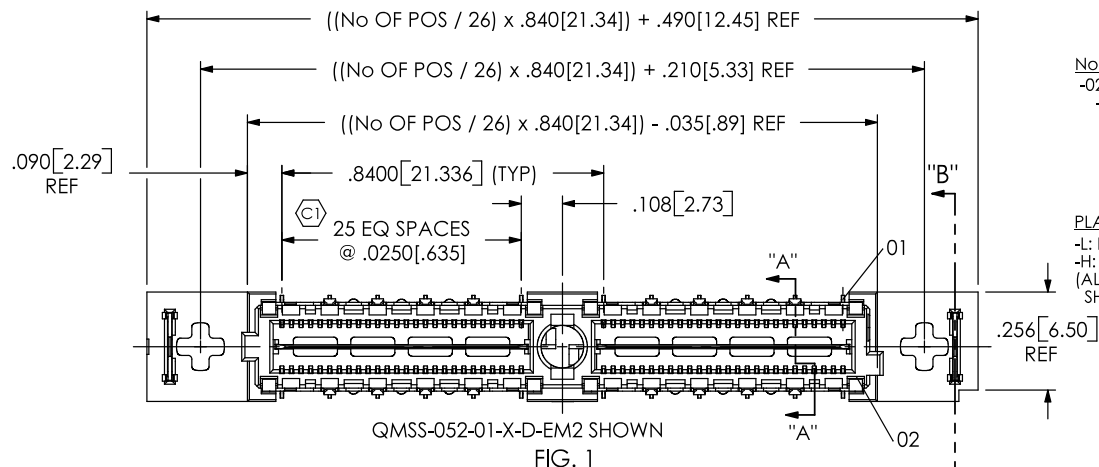
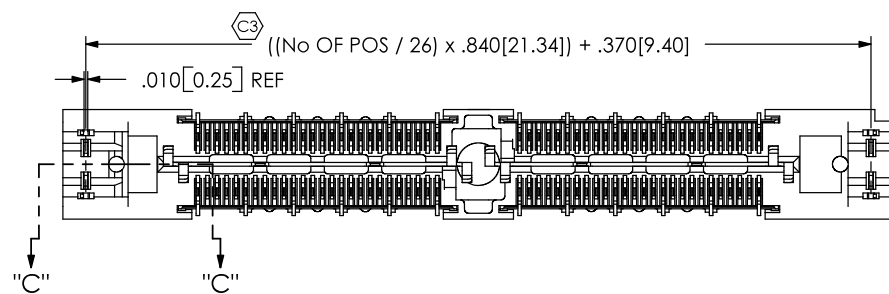
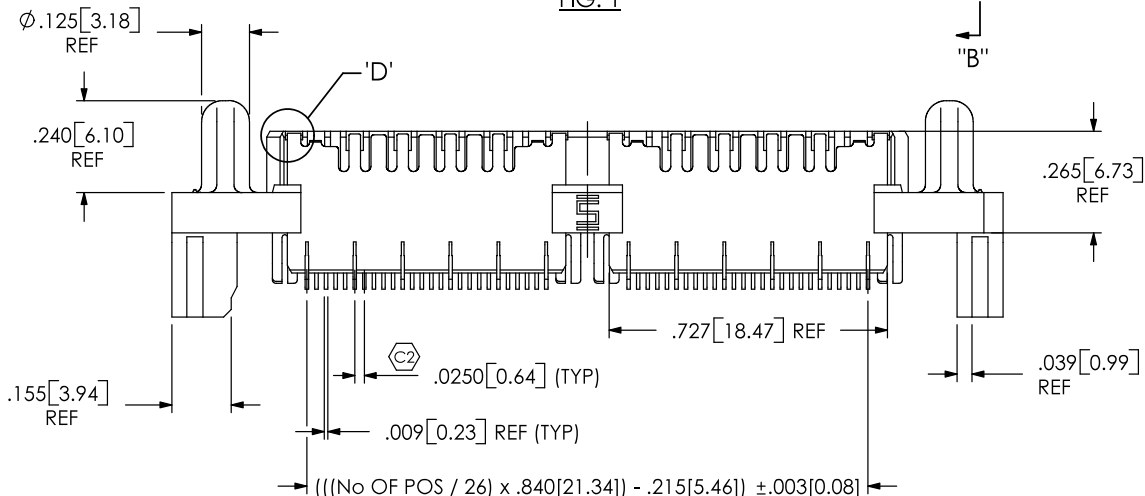


DO NOT SCALE FROM THIS PRINT



QMSS-052-01-X-D-EM2 SHOWN
FIG. 1



QMSS-XXX-XX-X-D-EM2-XXX-XX

No OF POSITIONS
-026, -052, -078, -104, * -130 (PER ROW)

LEAD STYLE
-01

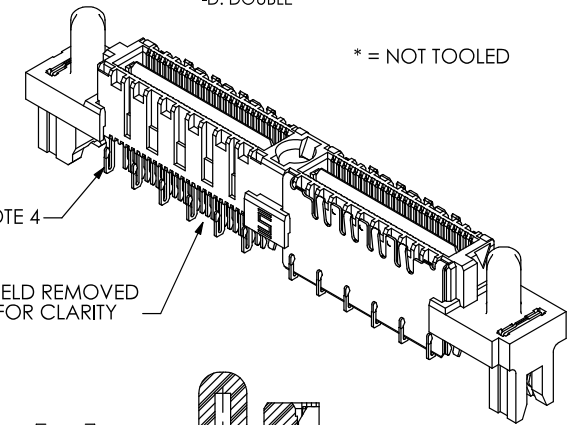
PLATING SPECIFICATION
-L: LIGHT GOLD (USE T-1M25-01-L)
-H: HEAVY GOLD (USE T-1M25-01-H)
(ALL PLATING STYLES USE SH1-E2-L, T-1G22-01-G & WT-17-GF)

OPTIONS
-TR: TAPE & REEL PACKAGING (-026 & -052 POSITION ONLY)

POWER COMBO OPTION
(USE T-1S13-13-S-2)
-PC4: 4 POWER POS PER END
-PC8: 8 POWER POS PER END (SEE FIG. 2, SHEET 3)
[-PCX AVAILABLE ON POSITIONS -026, -052 & -078 ONLY]

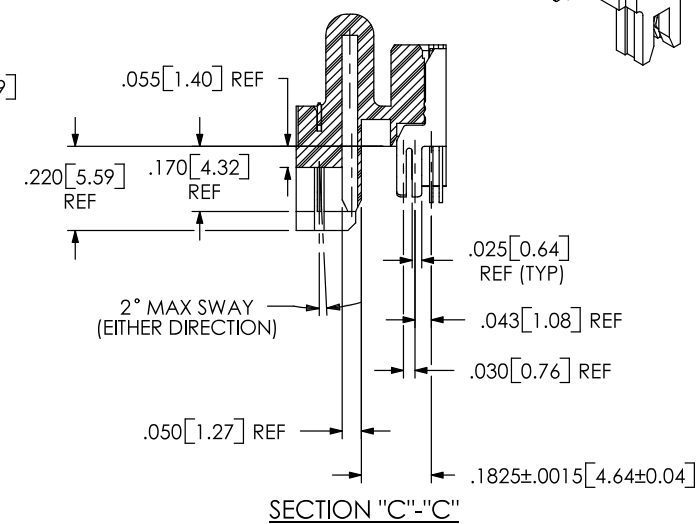
-EM2: EDGE MOUNT

ROW SPECIFICATION
-D: DOUBLE



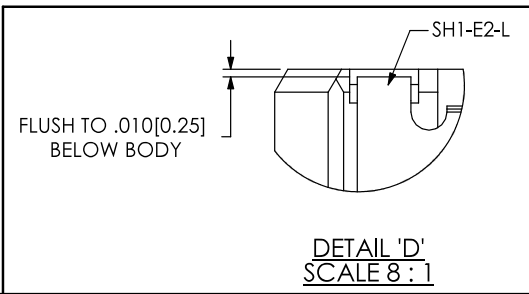
SEE NOTE 4

SHIELD REMOVED FOR CLARITY



SECTION "C"-"C"

- NOTES:
1. Ⓢ REPRESENTS A CRITICAL DIMENSION.
 2. BURR ALLOWANCE: .0015[0.038] MAX.
 3. MINIMUM PUSHOUT FORCE: SIGNAL: .5 LB, SHIELD/GROUND & WELD TAB: 1 LB.
 4. TERMINALS IN THE FIRST POSITION OF EACH BANK AND EVERY FIFTH POSITION AFTER THAT WILL NOT BE SHEARED.
 5. MAX VARIANCE OF .002[0.05].
 6. DIMENSION APPLIES TO GROUND PLANE & SIGNAL PINS.
 7. PARTS TO BE PACKAGED IN TRAYS AS STANDARD.



UNLESS OTHERWISE SPECIFIED, DIMENSIONS ARE IN INCHES. TOLERANCES ARE:

DECIMALS	ANGLES
.XX: ±.01 [.3]	2°
.XXX: ±.005 [.13]	
.XXXX: ±.0020 [.051]	

PROPRIETARY NOTE
THIS DOCUMENT CONTAINS INFORMATION CONFIDENTIAL AND PROPRIETARY TO SAMTEC, INC. AND SHALL NOT BE REPRODUCED OR TRANSFERRED TO OTHER DOCUMENTS OR DISCLOSED TO OTHERS OR USED FOR ANY PURPOSE OTHER THAN THAT WHICH IT WAS OBTAINED WITHOUT THE EXPRESSED WRITTEN CONSENT OF SAMTEC, INC.

MATERIAL: DO NOT SCALE DRAWING SHEET SCALE: 2:1
INSULATOR: LCP, COLOR: BLACK
TERMINAL, GROUND PLANE, & SHIELD: PHOS BRONZE

GENERATED WITH SolidWorks

F:\DWG\MISC\MKTG\QMSS-XXX-XX-X-D-EM2-XXX-XX-MKT.SLDDRW

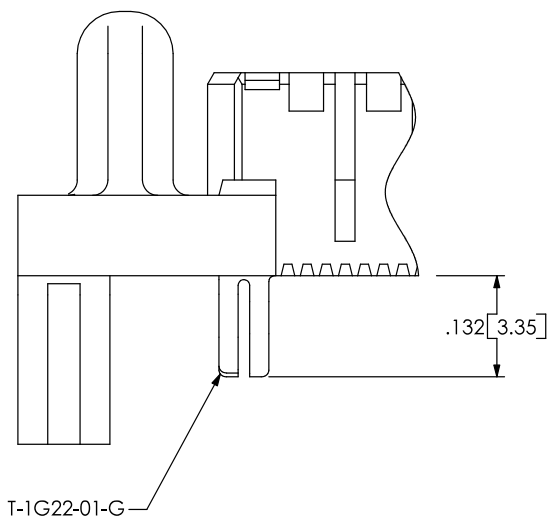
SAMTEC
520 PARK EAST BLVD, NEW ALBANY, IN 47150
* PHONE: 812.944.6733 FAX: 812.948.5047
e-Mail: INFO@SAMTEC.COM CODE: 55322

DESCRIPTION:
.635mm DOUBLE ROW SHIELDED EDGE MOUNT TERMINAL STRIP

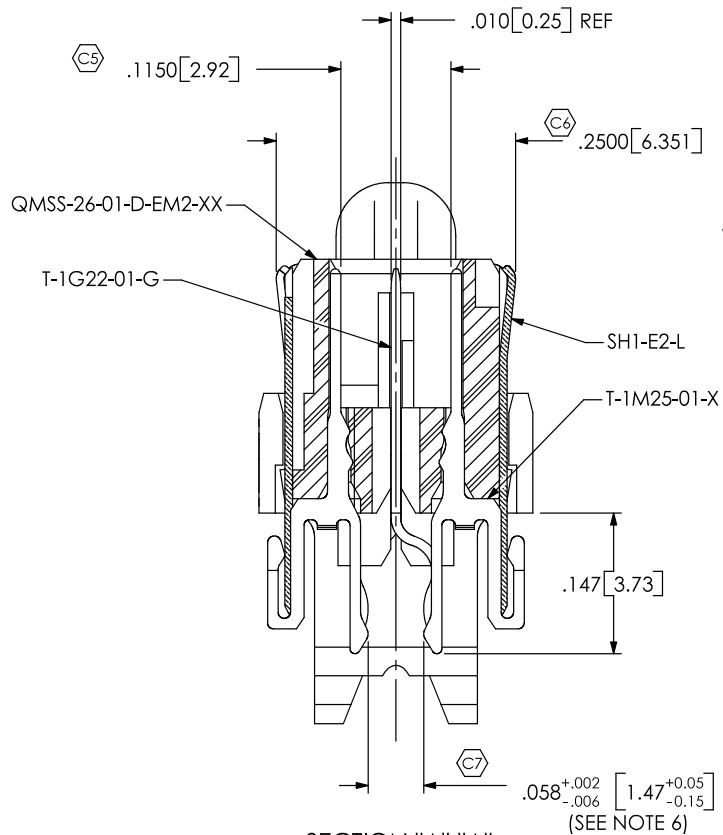
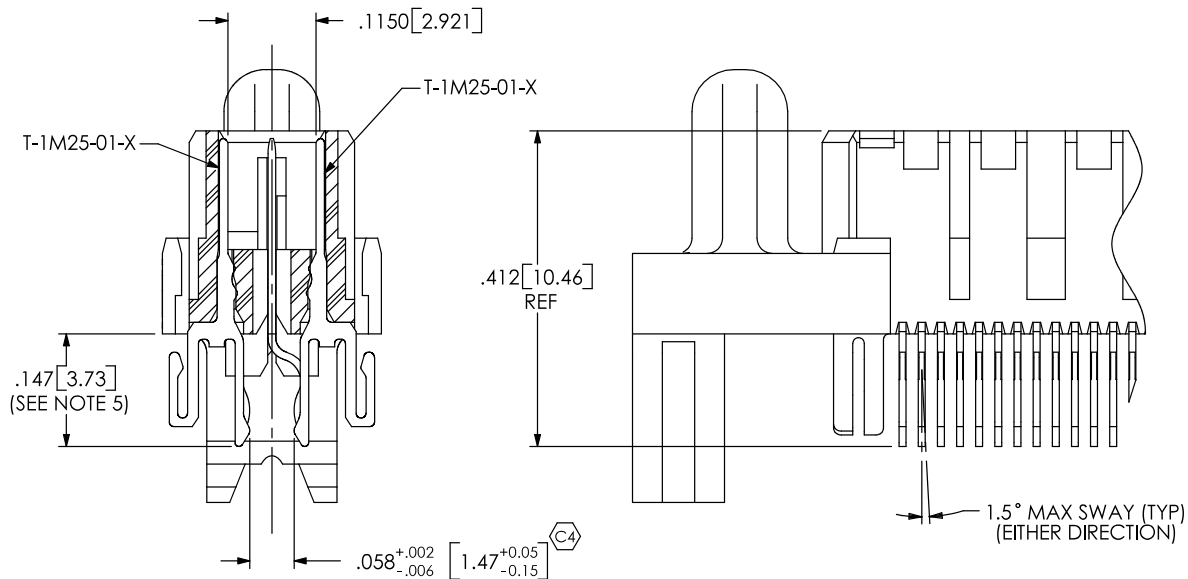
DWG. NO.
QMSS-XXX-XX-X-D-EM2-XXX-XX

BY: BRATCHER 11/22/2002 SHEET 1 OF 3

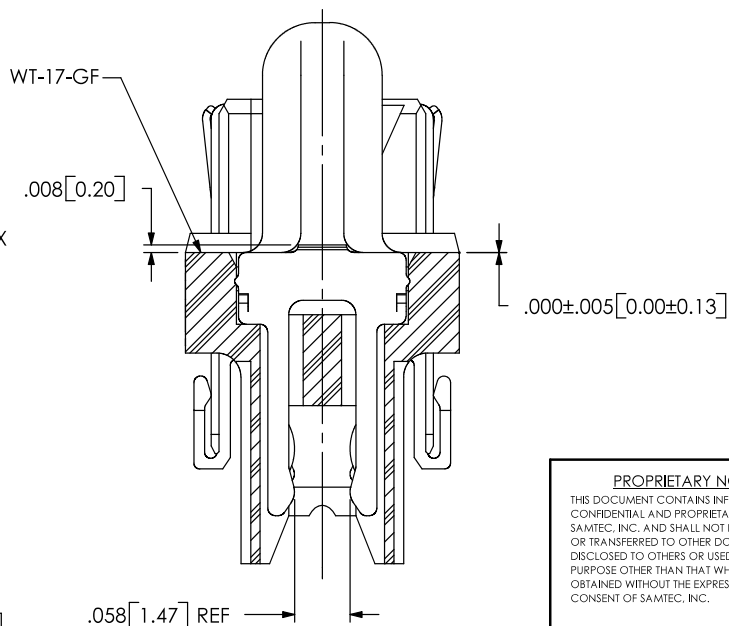
IN-PROCESS 1



IN-PROCESS 2

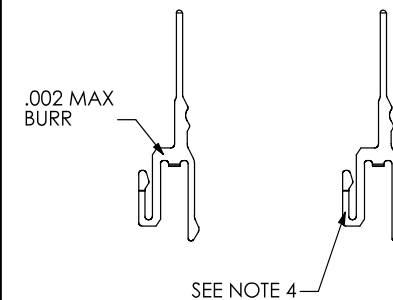


SECTION "A"-"A"
SCALE 5 : 1



SECTION "B"-"B"
SCALE 5 : 1

TERMINAL DETAILS



PROPRIETARY NOTE

THIS DOCUMENT CONTAINS INFORMATION CONFIDENTIAL AND PROPRIETARY TO SAMTEC, INC. AND SHALL NOT BE REPRODUCED OR TRANSFERRED TO OTHER DOCUMENTS OR DISCLOSED TO OTHERS OR USED FOR ANY PURPOSE OTHER THAN THAT WHICH IT WAS OBTAINED WITHOUT THE EXPRESSED WRITTEN CONSENT OF SAMTEC, INC.

DO NOT SCALE DRAWING

SHEET SCALE: 1:0.4

SAMTEC

520 PARK EAST BLVD, NEW ALBANY, IN 47150
* PHONE: 812.944.6733 FAX: 812.948.5047
e-Mail: INFO@SAMTEC.COM CODE: 55322

DESCRIPTION:
.635mm DOUBLE ROW SHIELDED EDGE MOUNT TERMINAL STRIP

DWG. NO.
QMSS-XXX-XX-X-D-EM2-XXX-XX

BY: BRATCHER 11/22/2002 SHEET 2 OF 3

FIG. 2 -PCX OPTION

QMSS-052-01-X-D-EM2-PC4 SHOWN
 [DIFFERENT AS SHOWN, OTHERWISE SAME AS FIG. 1]
 [AVAILABLE ON -026, -052 & -078 POSITIONS ONLY]

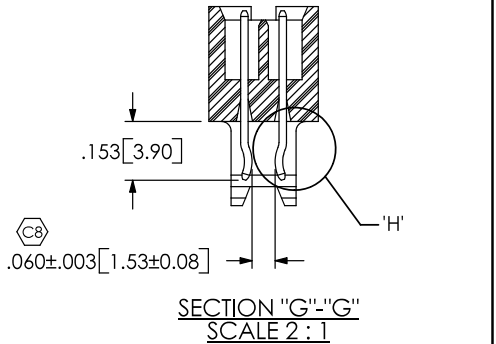
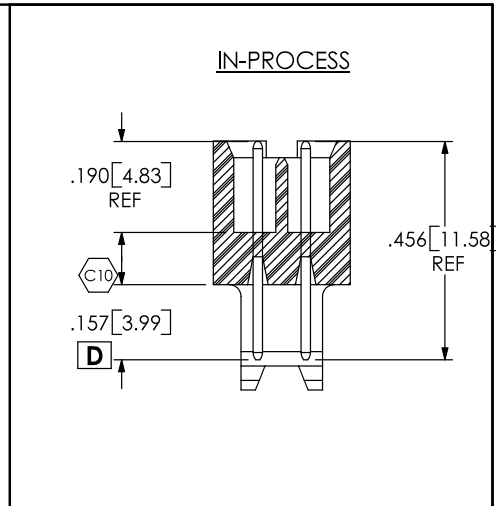
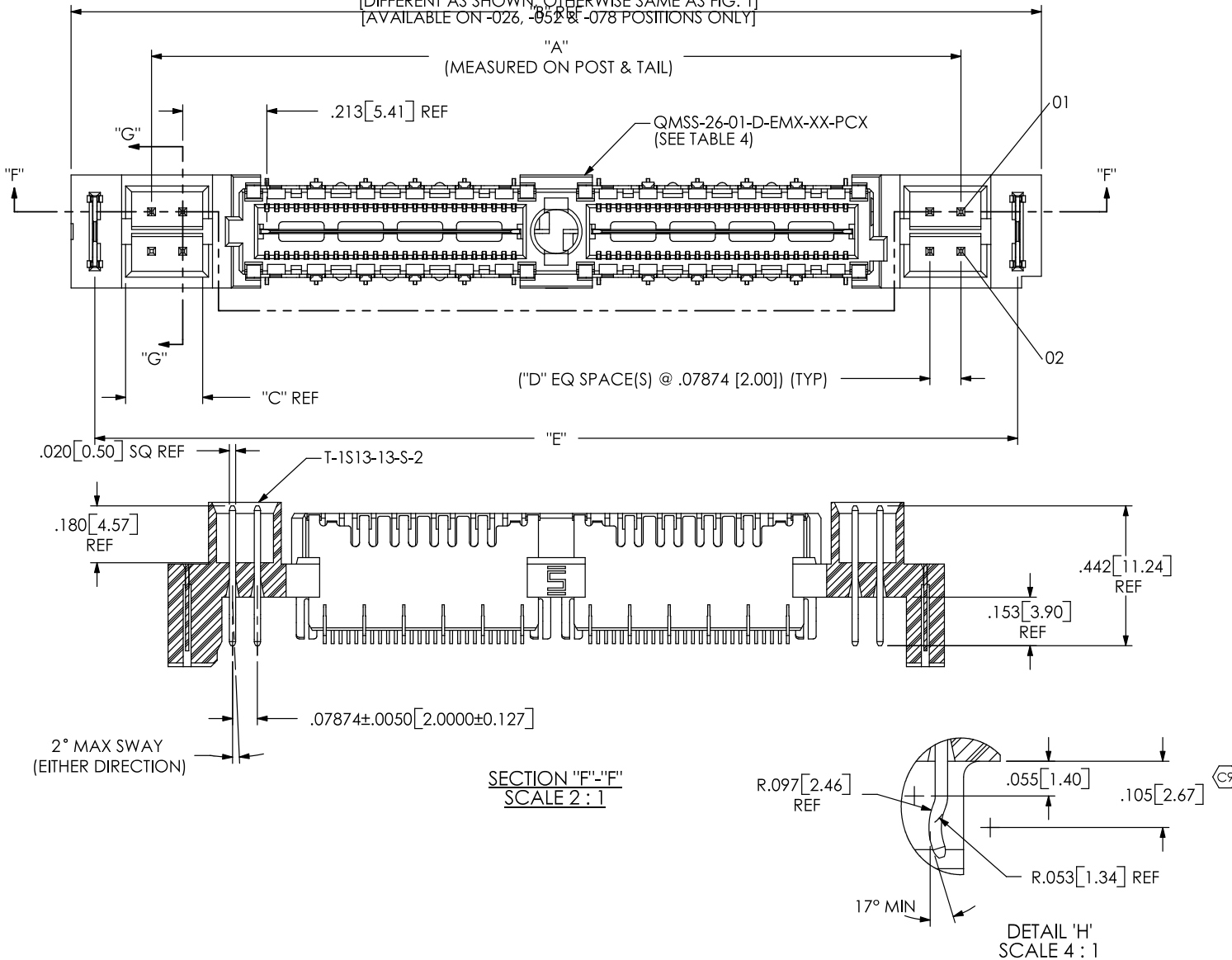


TABLE 1

ASSEMBLY	USE BODY	"A"	"B"	"C"	"D"	"E"
QMSS-026-01-X-D-EM2-PC4	QMSS-26-01-D-EM2-XX-PC4	1.209 [30.70]	1.616 [41.05]	.180 [4.57]	1	1.496 [38.00]
QMSS-026-01-X-D-EM2-PC8	QMSS-26-01-D-EM2-XX-PC8	1.524 [38.70]	1.931 [49.05]	.337 [8.57]	3	1.811 [46.00]
QMSS-052-01-X-D-EM2-PC4	QMSS-26-02-D-EM2-XX-PC4	2.049 [52.04]	2.456 [62.38]	.180 [4.57]	1	2.336 [59.34]
QMSS-052-01-X-D-EM2-PC8	QMSS-26-02-D-EM2-XX-PC8	2.364 [60.04]	2.771 [70.38]	.337 [8.57]	3	2.651 [67.34]
QMSS-078-01-X-D-EM2-PC4	QMSS-26-03-D-EM2-XX-PC4	2.889 [73.37]	3.296 [83.72]	.180 [4.57]	1	3.176 [80.67]
QMSS-078-01-X-D-EM2-PC8	QMSS-26-03-D-EM2-XX-PC8	3.204 [81.37]	3.611 [91.72]	.337 [8.57]	3	3.491 [88.67]

PROPRIETARY NOTE
 THIS DOCUMENT CONTAINS INFORMATION CONFIDENTIAL AND PROPRIETARY TO SAMTEC, INC. AND SHALL NOT BE REPRODUCED OR TRANSFERRED TO OTHER DOCUMENTS OR DISCLOSED TO OTHERS OR USED FOR ANY PURPOSE OTHER THAN THAT WHICH IT WAS OBTAINED WITHOUT THE EXPRESSED WRITTEN CONSENT OF SAMTEC, INC.

DO NOT SCALE DRAWING

SHEET SCALE: 1:0.4

SAMTEC

520 PARK EAST BLVD, NEW ALBANY, IN 47150
 * PHONE: 812.944.6733 FAX: 812.948.5047
 e-Mail: INFO@SAMTEC.COM CODE: 55322

DESCRIPTION:
 .635mm DOUBLE ROW SHIELDED EDGE MOUNT TERMINAL STRIP

DWG. NO.
QMSS-XXX-XX-X-D-EM2-XXX-XX

BY: BRATCHER 11/22/2002 SHEET 3 OF 3