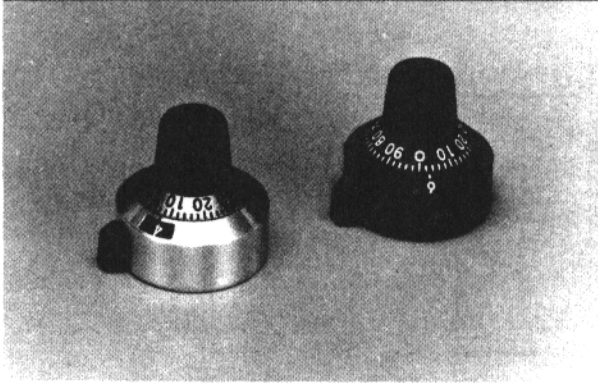


Series 316

## 7/8 in. Diameter, 15 Turn Concentric Scale Digital Readout Dial



### Description

The 316 Dial is a high quality, lower cost version of our 400 series. Possessing many of the same features, with the addition of a convenient digital window. The 316 series is an excellent complement to our 73JA, 73JB, and 62JA potentiometers.

### Features

- Low cost
- Large, easy to read numerals
- Brake lever for higher torque
- Precision mechanism with quality feel

### Series 316 Specifications

#### Readout and Operation

Unit shall register a total count of 15 turns. The number in the window (0 thru 14) indicates completed number of turns of the drive sleeve. Graduated circular dial indicates the percent of a partial turn of the drive sleeve.

#### Transfer Point

The number in center of window shall change as graduated dial rotates between 94 and 0.

#### Rotation

Readout shall increase with clockwise and decrease with counterclockwise rotation.

Specifications continued, next column

Specifications continued

#### Brake Lever Degrees

1st Position (15° movement of brake lever) operates a high torque system for fine adjustment;  
2nd Position (15° additional movement of brake lever) actuates brake.

#### Accuracy

Backlash shall be zero between graduated drive and drive sleeve.

#### Mounting

Install mounting bracket between panel and panel nut. Clarodial shall mount directly to shaft with No. 2-56 spline socket set screw, located adjacent to No. 50 on graduated dial.

#### Numeral Size

0.075 in. (1.905 mm) high

#### Graduation Size

Numeral graduations .045 in. long (1.14 mm)  
Intermediate graduations .030 in. long (0.76 mm)

#### Finish

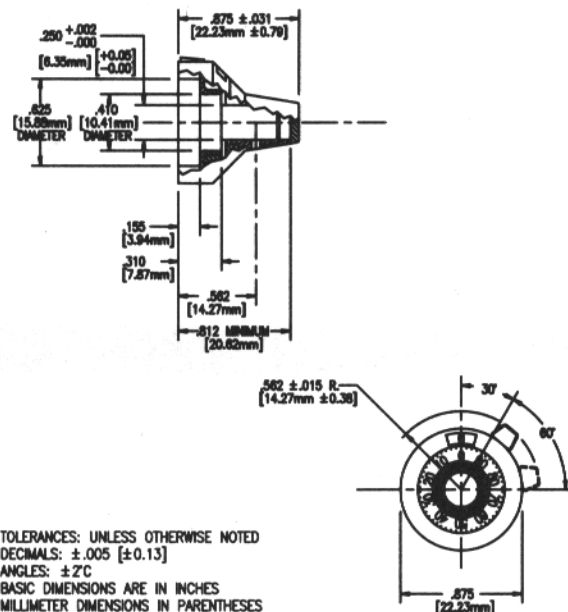
Exposed metal parts: brushed metal finish.  
Turning knob and brake lever knob: black plastic.  
Numerals: graduated dial - black; turns counter - white on black background.

#### Weight

0.7 oz. max. (19.84 gm)

Figure 1

### Series 316 Dimensions



### Series 316 How to Order

Catalog Number	Description
316-11	Clear anodized with brake lever.
316-12	Black anodized with brake lever.