

[← BACK TO KNOBS\(/KNOBS/\)](#)



OEJ Series

A simple and traditional knob shape with a light diamond knurl on the OD and a radius on the top. Indicator options include an arrow or line. Single 6-32 set screw.

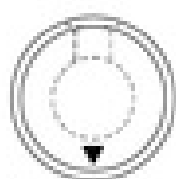


PART NUMBER BREAK DOWN

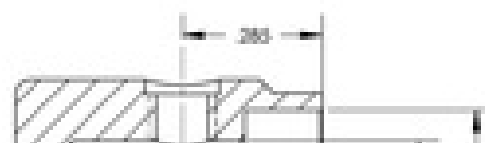
EXAMPLE: OEJA-90-4-7

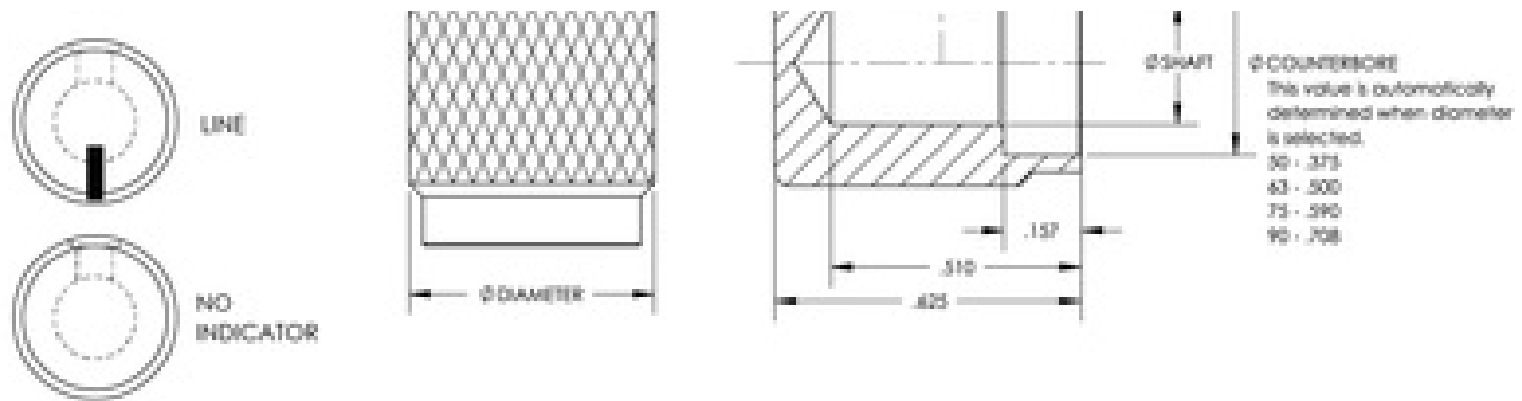
OEJ	A	90	4	7
MODEL	INDICATOR	DIAMETER	FINISH	SHAFT SIZE
These letters are the model series name.	This value represents the the indication mark.	This value indicates the outer diameter sizing of the knob.	This value indicates the color and finish of the knob.	This value indicates shaft sizing.
	L - LINE A - ARROW NI - NO IND.	50 - .500 63 - .625 75 - .750 90 - .900	1 - CLEAR GLOSS 2 - BLACK GLOSS 3 - CLEAR MATTE 4 - BLACK MATTE	5 - .250 6 - .125 7 - .3175 (3MM)

INDICATOR STYLE



ARROW





ROHS & REACH COMPLIANCE(/ROHS/) CONFLICT MINERALS COMPLIANCE(/TERMS-CONDITIONS/)

SPEC PRINTS (/SPEC-PRINTS/)

"WE COULD MAKE A REALLY BIG KNOB ... WE JUST CHOOSE NOT TO."

© 2016 KILO INTERNATIONAL