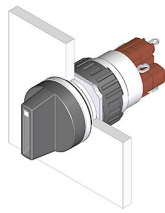


EAO – Your Expert Partner for Human Machine Interfaces

52-271.0252 - Selector switch 2 positions

52-271.0252 - Selector switch 2 positions



Attention: The preview is based on a sample product. This can differ from your current configuration.

Mounting

Mounting cut-out Ø 16 mm
Design raised

Front

Front dimension Ø 18 mm
Front shape round

Other Attributes

Weight 0,006 kg

Operating-/Indication part

Switching angle 90° right
Lever illumination
Lever shape short
Lever material Plastic

IP-Rating

Front protection IP65

Connection Method

Terminal Solder

Actuator

Switching action Rest - Maintain

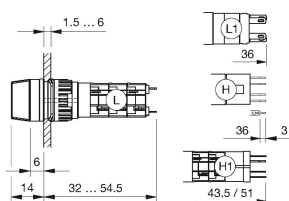
Switching element

Rotary positions 2
Switching system Snap-action switching element
Contacts 1 NC + 1 NO
Switching current 5 A
Contact material gold-plated silver
Switching voltage 250 V AC

EAO – Your Expert Partner for Human Machine Interfaces

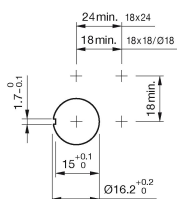
52-271.0252 - Selector switch 2 positions

Dimensions

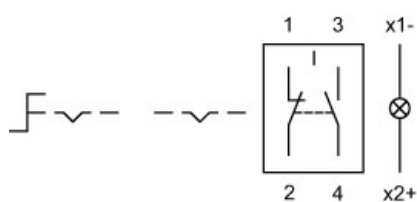


H = Universal terminal 2.0 x 0.5 mm

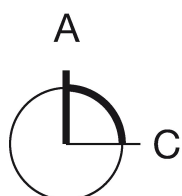
Mounting cut-outs



Wiring diagram



Switching positions



Additional information

illuminative

Legend

Contacts: NC = Normally closed, NO = Normally open
Switching action: A = Rest, C = Maintained