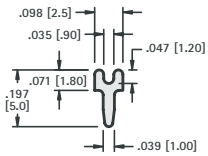


PC TEST POINTS - SLOTTED & LOOP TYPES



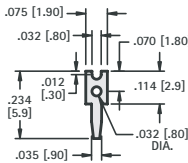
- Low profile, space saving designs for dense packaging
- Wide variety of configurations to suit most applications
- Safe, practical, economical replacement for wire-wrap posts
- Easy mount design, ideal for wave soldering
- Re-fit PC boards without need for re-design
- Provides easy access for production testing and field service troubleshooting
- Positive grip when using J hooks, EZ hooks, grabbers, clips, tips and probes
- Custom test point terminals can be manufactured to your specifications
- Other platings and materials available upon request

PC TEST POINTS - SLOTTED



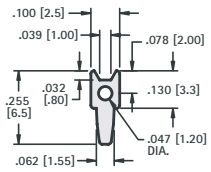
CAT. NO. 4950

MATERIAL:
.025 (.64) thick Brass,
Tin Plate



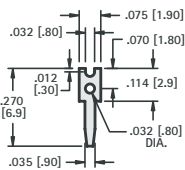
CAT. NO. 1030

MATERIAL:
.025 (.64) thick Brass,
Tin Plate



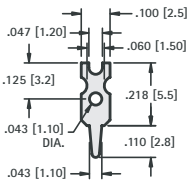
CAT. NO. 1032

MATERIAL:
.025 (.64) thick Brass,
Tin Plate



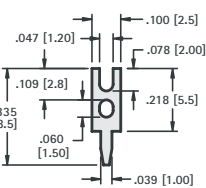
CAT. NO. 1031

MATERIAL:
.020 (.51) thick Brass,
Tin Plate



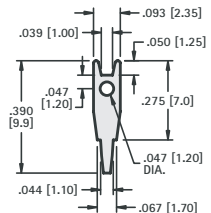
CAT. NO. 1034

MATERIAL:
.025 (.64) thick Brass,
Tin Plate



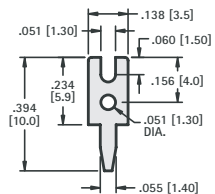
CAT. NO. 1035

MATERIAL:
.020 (.51) thick Brass,
Tin Plate



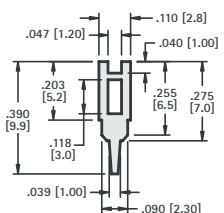
CAT. NO. 1036

MATERIAL:
.025 (.64) thick Brass,
Tin Plate



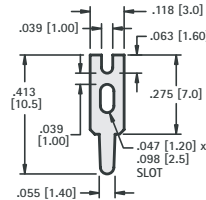
CAT. NO. 1039

MATERIAL:
.025 (.64) thick Brass,
Tin Plate



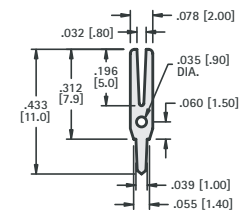
CAT. NO. 1040

MATERIAL:
.025 (.64) thick Brass,
Tin Plate



CAT. NO. 4951

MATERIAL:
.025 (.64) thick Brass,
Tin Plate

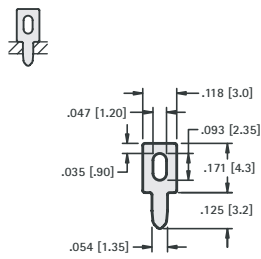
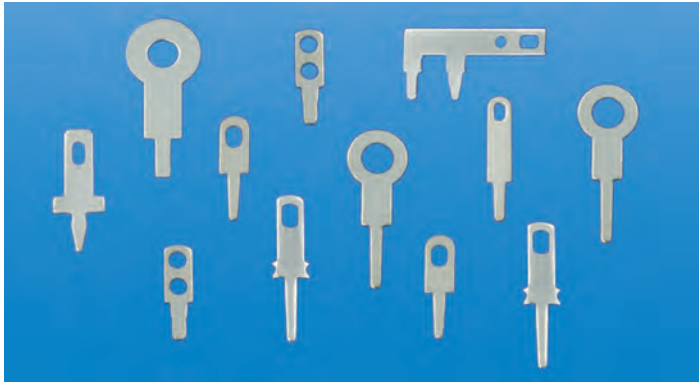


CAT. NO. 1037

MATERIAL:
.016 (.41) thick Brass,
Tin Plate

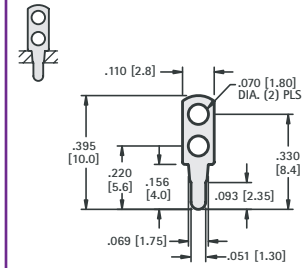
PC TEST POINT TERMINALS

PC TEST POINTS - LOOP TYPES



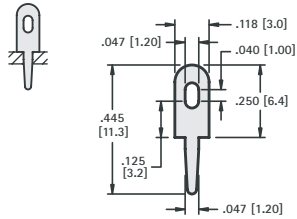
CAT. NO. 1033

MATERIAL:
.025 (.64) thick Brass,
Tin Plate



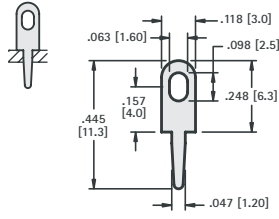
CAT. NO. 1038

MATERIAL:
.020 (.51) thick Brass,
Tin Plate



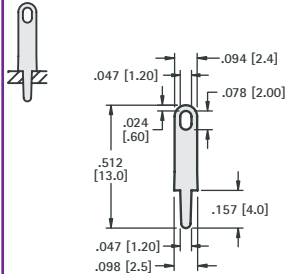
CAT. NO. 1249

MATERIAL:
.025 (.64) thick Brass,
Tin Plate



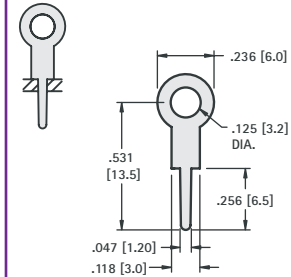
CAT. NO. 4952

MATERIAL:
.025 (.64) thick Brass,
Tin Plate



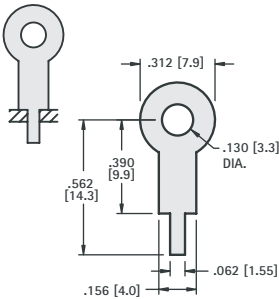
CAT. NO. 4953

MATERIAL:
.020 (.51) thick Brass,
Tin Plate



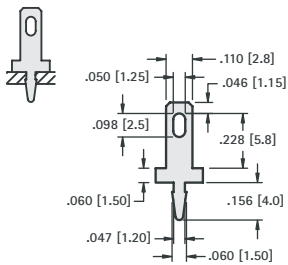
CAT. NO. 4954

MATERIAL:
.020 (.51) thick Brass,
Tin Plate



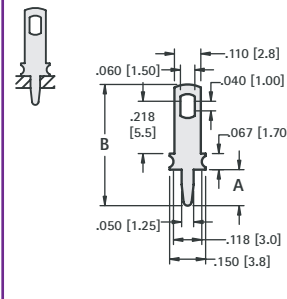
CAT. NO. 680

MATERIAL:
.015 (.38) thick Brass,
Tin Plate



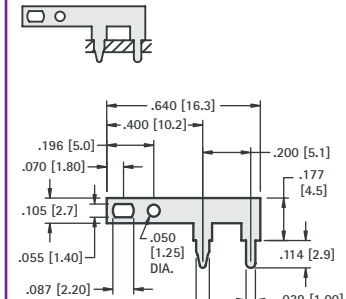
CAT. NO. 1250

MATERIAL:
.020 (.51) thick Brass,
Tin Plate



MATERIAL: .032 (.81) thick Brass, Tin Plate

CAT. NO.	A	B
1041	.275 (7.0)	.630 (16.0)
1046	.150 (3.8)	.503 (12.8)



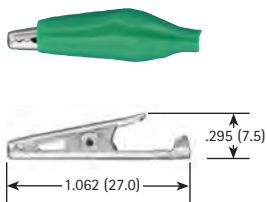
CAT. NO. 1045

MATERIAL:
.025 (.64) thick Brass,
Tin Plate

ALLIGATOR CLIPS

SMALL CLIP

- Solder Connection with Strain Relief
- Insulated or Non-Insulated



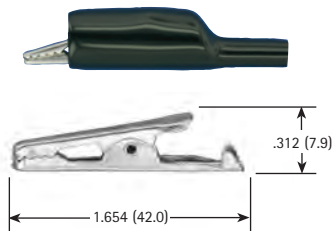
CAT. NO.	INSULATOR COLOR
5033	NONE
5034	RED
5035	BLACK
5036	GREEN
5037	YELLOW

JAW SPREAD
.236 (6.0) max.

MATERIAL:
Clip: Steel, Nickel Plate
Insulator: Vinyl

MEDIUM CLIP

- Solder Connection with Strain Relief
- Insulated or Non-Insulated



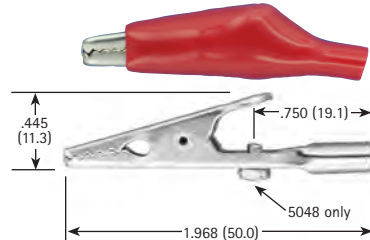
CAT. NO.	INSULATOR COLOR
5038	NONE
5039	RED
5040	BLACK

JAW SPREAD
.236 (6.0) max.

MATERIAL:
Clip: Steel, Nickel Plate
Insulator: Vinyl

LARGE CLIP

- Solder Connection or Screw Connection (Barrel Accepts Wire or Standard Banana Plugs)
- Insulated or Non-Insulated



CAT. NO.	INSULATOR COLOR
5044	NONE
5045	RED
5046	BLACK
5048	SCREW INSTALLED

JAW SPREAD
.315 (8.0) max.

MATERIAL:
Clip: Steel, Nickel Plate
Insulator: Vinyl