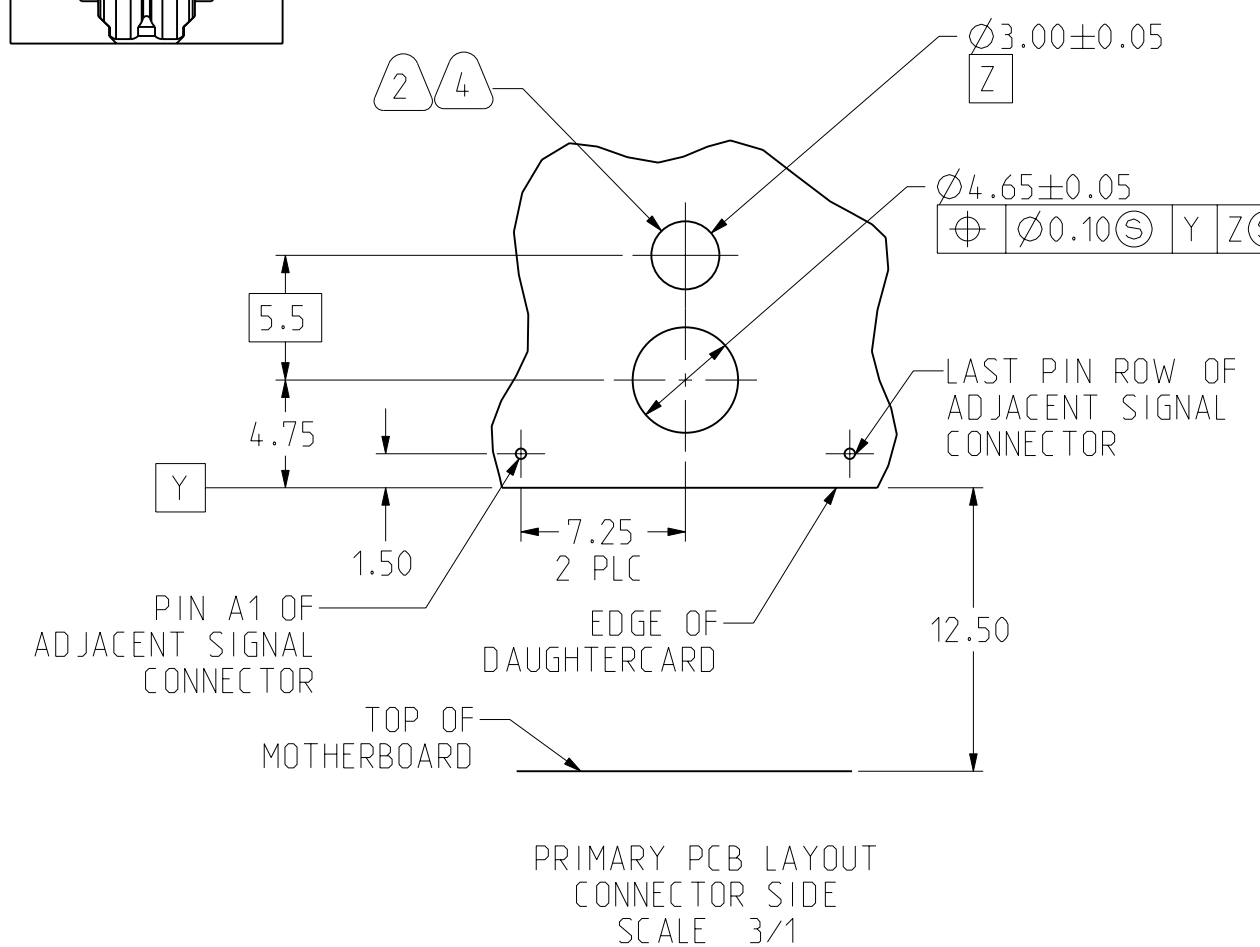
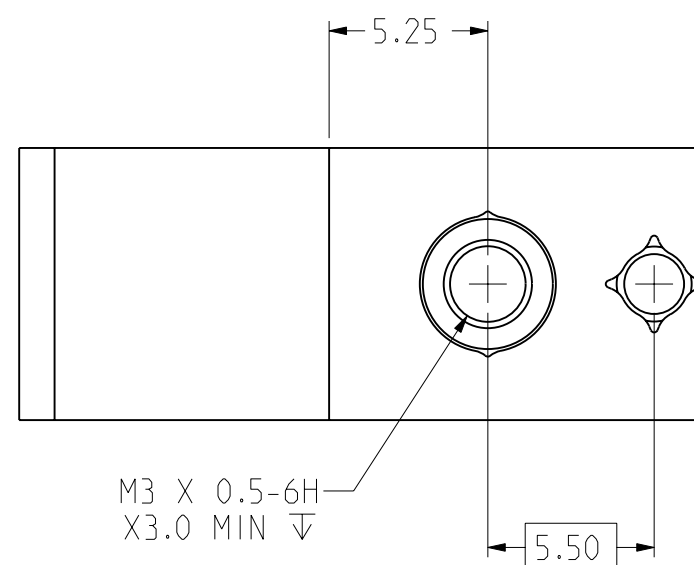
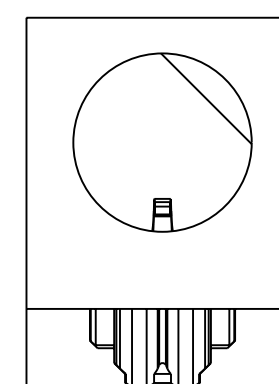
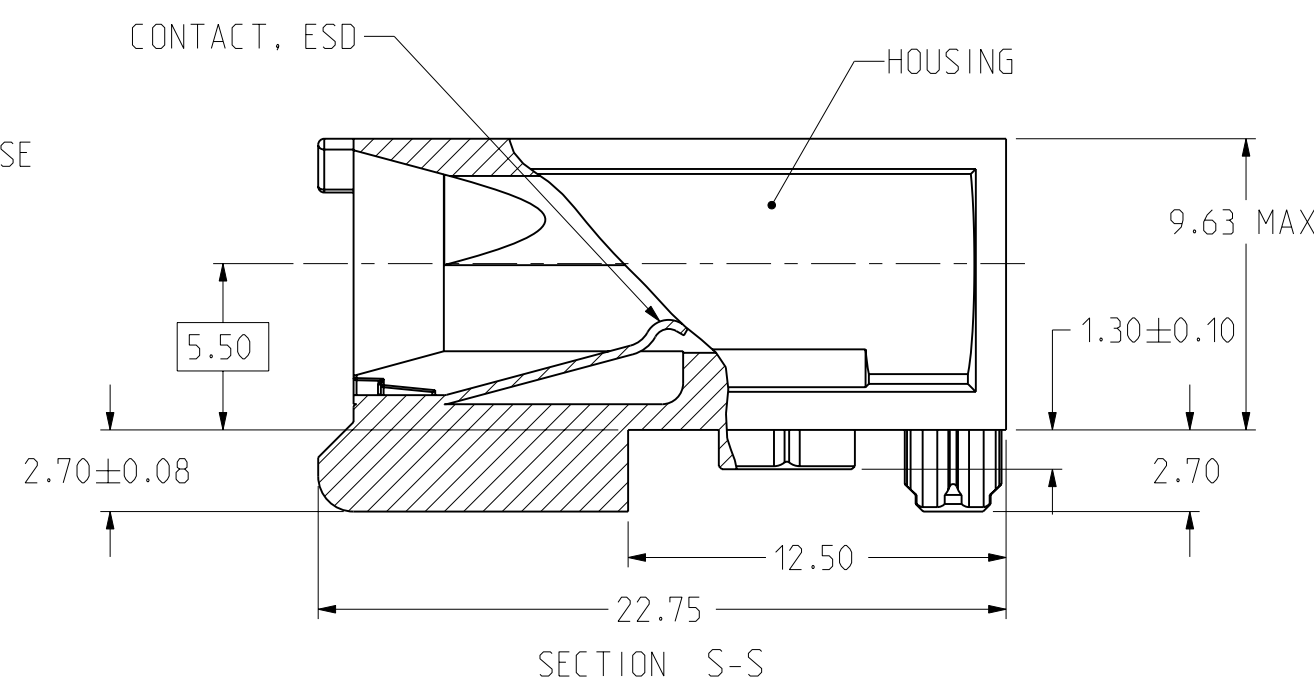
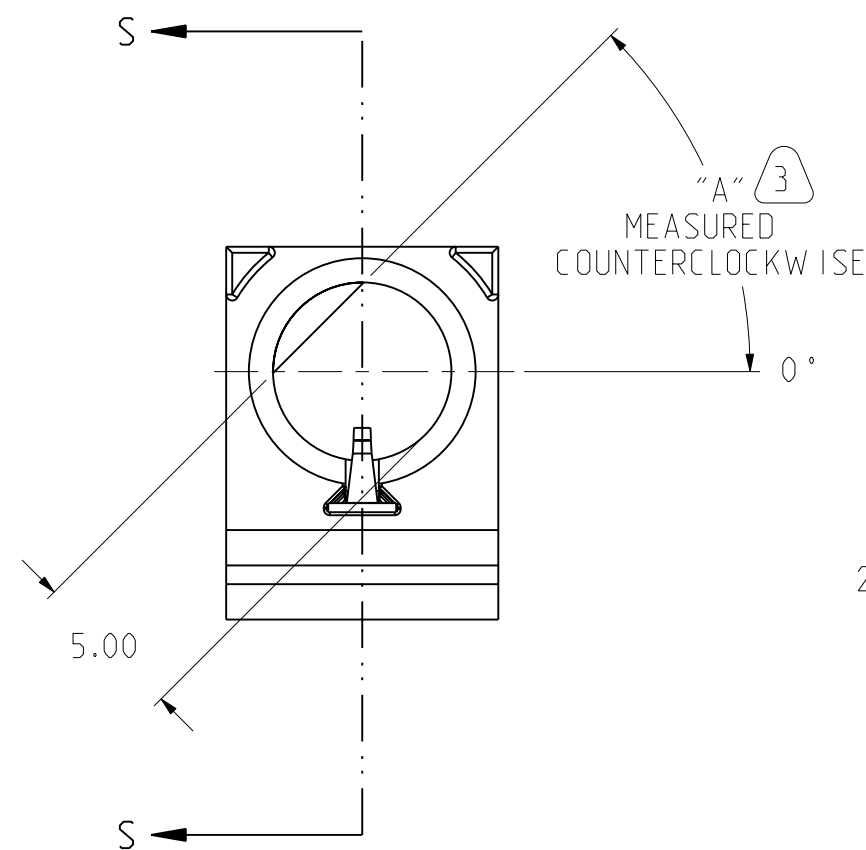
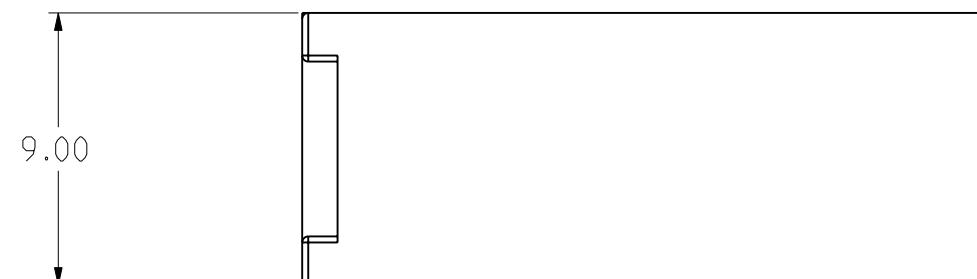


REV. A	SHEET 1 OF 1	DOCUMENT NO. RVPX-HMD-X
REVISIONS M		
LTR	DESCRIPTION	DATE
A	INITIAL RELEASE	

PART NUMBER	DIM "A"
RVPX-HMD-1	0°
RVPX-HMD-2	45°
RVPX-HMD-3	90°
RVPX-HMD-7	270°
RVPX-HMD-8	315°
RVPX-HMD-9	NO KEY



- 7 GUIDE MODULE W/O KEYING
GUIDE PIN RVPX-HPD-X SERIES MUST BE ORIENTED TO PROVIDE PROPER ESD PERFORMANCE
- 6 CONTACT FINISH: 3.81µm MINIMUM SILVER IN CONTACT AREA OVER 1.27µm MINIMUM NICKEL ALL OVER
- 5 FINISH: SILVER OVER NICKEL OVER COPPER
- 4 GROUND PAD Ø5mm ON BOTH SIDE OF PCB
- 3 SEE TABLE 1 FOR KEY ORIENTATION (P/N RVPX-HMD2 SHOWN ON DRAWING)
- 2 HOLE FOR POSTIVE RETENTION SCREW.
- 1 MATERIAL: HOUSING: ZINC ALLOY DIE CASTING ZAMAK 3.
CONTACT: COPPER 7025

NOTES:

THE USE OF THIS DOCUMENT IS UNLIMITED. HOWEVER, DOCUMENTS REFERENCED HEREON MAY CONTAIN LIMITED RIGHTS DATA.

RELEASED / Jul . 06 2016, 11:10:43 AM

DOCUMENT NO. RVPX-HMD-X

SHEET 1 OF 1

REV. A

NONE NEXT ASSEMBLY

PRO/ENGINEER INFORMATION
 Pro/e Model Used:
 RVPX-HMD-XM.ASSEM
 Drawing Name:
 RVPX-HMD-X

UNLESS OTHERWISE SPECIFIED	SPECIFICATIONS	POS	QTY	PART NUMBER	DESCRIPTION	NOTE
LINEAR DIMENSIONS ARE IN MILLIMETERS TOLERANCES: .XXXX = ±. - ANGLES= ±1° .XXX = ±. - .XX = ±.13 .X = ±.5 DIM. & TOL. PER ASME Y14.5M; DRM PER MIL-DTL-31000; OTHER Amphenol Stds. PER 9-3800 LEGENDS: =FLAG NOTE CALL OUT REFERENCE ONLY	MATERIAL SPEC.	APPROVALS		DATE	PARTS LIST	
	SEE NOTE 1	PREPARED BY	H. BROOKER	1-Jul-16	AMPHENOL CORPORATION 40-60 DELAWARE AVENUE SIDNEY, N.Y. 13858	
PROCESS SPEC.	SEE NOTE 5	ENGINEER IN CHARGE	S. LANGELIER		RVPX DAUGHTERCARD GUIDE DIECAST	
		DESIGN MANAGER	J. PAUL		DOCUMENT NO. RVPX-HMD-X REV. A	
		DESIGN ACTIVITY GROUP	BOARD LEVEL		SIZE C CAGE CODE 77820 SCALE: 4.0	REF. RVPX-HMDX SHEET 1 OF 1