



## HDMI 4 Pi - 7" Display 1280x800 (720p) IPS - HDMI/VGA/PAL/NTSC

PRODUCT ID: 1033

17 IN STOCK

1

ADD TO CART

1-9

10-99

100+

ADD TO WISHLIST

DESCRIPTION

TECHNICAL DETAILS



## DESCRIPTION

Yes, this is an adorable small HDMI television with incredibly high resolution! We tried to get the smallest possible HDMI/VGA display with high-res, high-contrast visibility. The visible display measures only 7" (17.8cm) diagonal, and the TFT comes in an enclosure with HDMI, VGA and Composite inputs. The display is very easy to use - simply connect the included 12VDC adapter to the 2.1mm center-positive DC jack, then connect a digital video source to one of the ports. Voila, a television display! There's some little buttons on the front that let you enter a menu system for adjusting brightness, color and contrast. It auto-detects which input you have and

switches to that one or you can 'select' from the menu which to display. It comes with a basic stand (shown) and there are four 'mounting thread' holes in the back in a 75mmx75mm square and you can use M4 screws to attach it to an enclosure. There's also a "Camera Mount" 1/4-20 hole in the bottom so you can attach it to a camera-ready mount.

[We also have a version with built in 3W speakers so you can do a full A/V setup check out that 7" display with speakers here.](#)

To demonstrate it, we took some photos with the display connected to a Raspberry Pi, but it will also work connected to any device with HDMI, VGA or NTSC/PAL output. It will not work with a device that only outputs DVI (without a DVI->HDMI converter) or SECAM.

For use with a Raspberry Pi we suggest editing `config.txt` as in the technical tab.

For use with a BeagleBone black, we found it works when plugged in, no configuration required. You may need a mouse/keyboard to keep the Bone display from going into 'sleep mode'

**A 9V US-prong power adapter is included.** The power supply may vary from the one shown in the photo, but it will definitely have a US 2-prong plug and will be a switching supply that can be used with 110-240VAC. We also powered it with 12V and it worked fine, and it might work at 5V.

---

## TECHNICAL DETAILS

- Power with 5-24VDC
- 700mA power draw at 12V
- 16:10 display ratio
- Resolution: 1200 x 800
- Visible area: 150mm x 95mm 16:10
- Brightness: 400cd/m2
- Contrast: 800:1
- We opened up one of the displays and found [an HSD070PWW1 inside](#), we expect that all of TVs have this display or something similar
- Auto-detects between VGA, HDMI and Composite
- Display plastic case dimensions: 180mm x 130 x 30
- Weight (excluding power cable): 290g/10.2oz
- Not HDCP compatible - it cannot be used with 'secured' HDMI sources

[For more information on this HDMI display, including a suggested config.txt, check out our HDMI Display ÜBERGUIDE!](#)

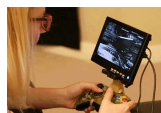
---

## LEARN



### [Creepy Face Tracking Portrait](#)

Build a creepy Raspberry Pi-powered Halloween decoration that stares back at you!



### [3D Printed Personal Monitor Game Controller Mount](#)

Make a personal gaming session without the big screen



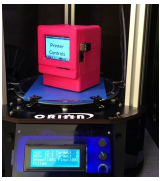
### [The Adafruit HDMI Display Monitor ÜBERGUIDE](#)

Learn about our wide variety of HDMI/VGA/Composite Displays!



### [OctoPrint - Open Source Host Software](#)

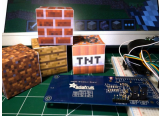
Put your printer on the network with open source



**AstroPrint 3D Printing**  
Wireless 3D Printing for  
Raspberry Pi



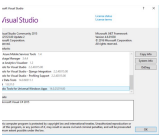
**Raspberry Pi Video Looper**  
Turn a Raspberry Pi into a  
dedicated 1080p video  
playback tool for art  
installations, digital signs, or  
just playing cat videos!



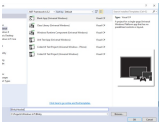
**Raspberry Pi NFC Minecraft  
Blocks**  
Make papercraft Minecraft  
blocks that interact with the  
world using near-field  
communication!



**Processing on the Raspberry  
Pi & PiTFT**  
How to run a Processing  
sketch on the Pi & PiTFT  
display.



**Getting Started With Windows  
IoT Core on Raspberry Pi**  
How we got up to speed!

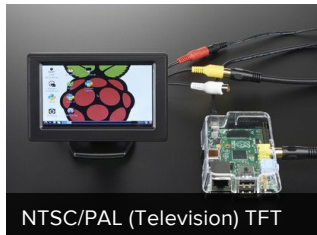


**Windows IoT Core  
Application Development:  
Headed Blinky**  
Learn how to create an  
Windows IoT Core Headed  
Application

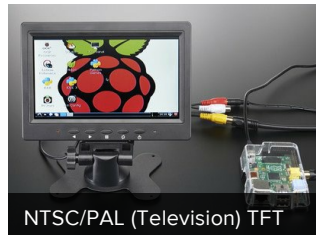
## MAY WE ALSO SUGGEST...



HDMI Cable - 1 meter



NTSC/PAL (Television) TFT



NTSC/PAL (Television) TFT



HDMI to VGA Video Adapter



HDMI 7" 800x480 Display



HDMI 4 Pi: 7" Display no



TFP401 HDMI/DVI Decoder



Pimoroni Raspberry Pi 7"



SmartPi Touch Back Cover -



## DISTRIBUTORS [EXPAND TO SEE DISTRIBUTORS](#)

- [CONTACT](#)
- [SUPPORT](#)
- [DISTRIBUTORS](#)
- [EDUCATORS](#)
- [JOBS](#)
- [FAQ](#)
- [SHIPPING & RETURNS](#)
- [TERMS OF SERVICE](#)
- [PRIVACY & LEGAL](#)
- [ABOUT US](#)

*"Seek freedom and become captive of your desires. Seek discipline and find your liberty" - [Frank Herbert](#)*

ENGINEERED IN NYC Adafruit®



4.9 ★★★★★  
Google  
Customer Reviews