

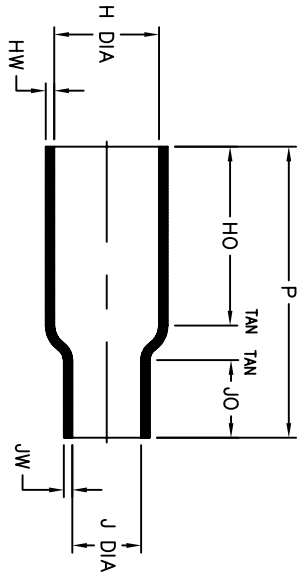
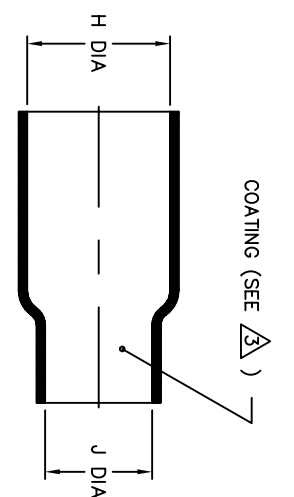
NOTES

1. ALL DIMENSIONS ARE IN INCHES [MILLIMETERS]
2. DIMENSIONS APPEARING IN TABLE ARE AS FOLLOWS:
 - a - AS SUPPLIED
 - b - AFTER UNRESTRICTED RECOVERY
3. COATING (ADHESIVE): IS OPTIONAL AS SUPPLIED DIMENSIONS APPEARING IN TABLE ARE FOR UNCOATED PARTS. WHEN COATING IS ADDED, ENTRY DIAMETER WILL BE REDUCED BY .06 MAX.
4. ORDERING INFORMATION:

BASE PART NUMBER 202E334 -XX -XX /XXX -0

MATERIAL DASH NUMBER
 -50 FLEXIBLE VITON (RT-1313)
 -51 FLEXIBLE EPB (RT-1321)
 -71 FLEXIBLE POLYOLEFIN (RT-1316)
 -770 NBCCS (RT-770 TYPE II)
 -780 NBCCS (RT-780 TYPE II)

ADHESIVE SLASH NUMBER
 SEE COMPATIBILITY CHART BELOW
 COLOR DESIGNATOR



AS SUPPLIED | AFTER UNRESTRICTED RECOVERY

TABLE OF DIMENSIONS

PART DESCRIPTION	H		J		P	HO	JO	HW	JW
	MIN	MAX	MIN	MAX					
202E334	.50 [12.7]	.42 [10.7]	.44 [11.2]	.11 [2.8]	2.50 [63.5]	1.62 [41.1]	.62 [15.7]	.06 [1.52]	.06 [1.52]
202E336	.82 [20.8]	.42 [10.7]	.81 [20.6]	.21 [5.3]	2.50 [63.5]	1.62 [41.1]	.65 [16.5]	.06 [1.52]	.06 [1.52]
202E344	.87 [22.1]	.74 [18.8]	.44 [11.2]	.10 [2.5]	2.10 [53.3]	1.10 [27.9]	.62 [15.7]	.09 [2.29]	.06 [1.52]
202E346	.87 [22.1]	.74 [18.8]	.81 [20.6]	.31 [7.9]	2.10 [53.3]	1.10 [27.9]	.55 [14.0]	.09 [2.29]	.06 [1.52]

CUSTOMER DRAWING

COMPATIBILITY CHART

MATERIAL DASH NO.	ADHESIVE (COATING) SLASH NO.	ADHESIVE (COATING) S NO.
-50	N/A	N/A
-51	/86; /164; /180	S-1048; S-1124; S-1030
-71	/42; /86; /180	S-1017; S-1048; S-1030
-770	N/A	N/A
-780	N/A	N/A

UNLESS OTHERWISE SPECIFIED, DIMENSIONS ARE IN INCHES, METRIC DIMENSIONS ARE IN BRACKETS.

DECIMAL TOLERANCES
 XXX ± 0.005 (0.13 mm)
 XX ± 0.01 (0.25 mm)
 X ± 0.1 (0.50 mm)
 ANGLE TOLERANCE
 X ± 1 DEG.

THIRD ANGLE PROJECTION

Tyco Electronics
 Roychem Molded Parts
 305 Constitution Dr
 Menlo Park, CA 94025

BOOT, STRAIGHT

SIZE CODE IDENT. NO. DWG. NO.
 B 06090 202E334thru346

DO NOT SCALE THIS DRAWING. SHEET 1 OF 1

REVISIONS

LTR	DESCRIPTION	DATE
T	ECO-09-016592	07/15/2009