

Electroluminescent (EL) Panel - 10cm x 10cm White

PRODUCT ID: 625

46 IN STOCK

1

ADD TO CART

1-9

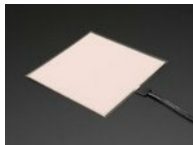
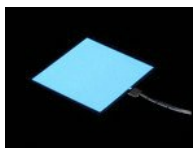
10-99

100+

ADD TO WISHLIST

DESCRIPTION

TECHNICAL DETAILS



DESCRIPTION

EL panel is the big sister to EL wire - it has the same glow effect but with a flat shape instead of a round shape. This is a big sheet of flexible plastic coated with EL material so its like one big glowing square. It emits an even glow over the entire shape. The glowing part of the panel is 10 cm x 10 cm (approx: 4" x 4"). There's a plastic coating is about 10.4cm x 10.4cm. Its covered in what seems to be PVC, the tape is thus weather-proof - but note that the connectors are NOT waterproof, just a bit of heatshrink. This isn't something we would suggest leaving outdoors for extended periods.

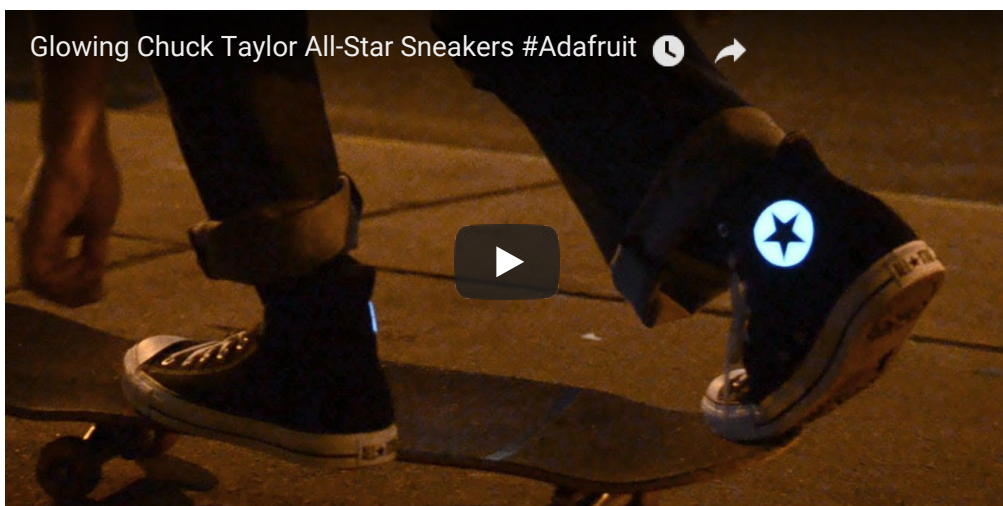
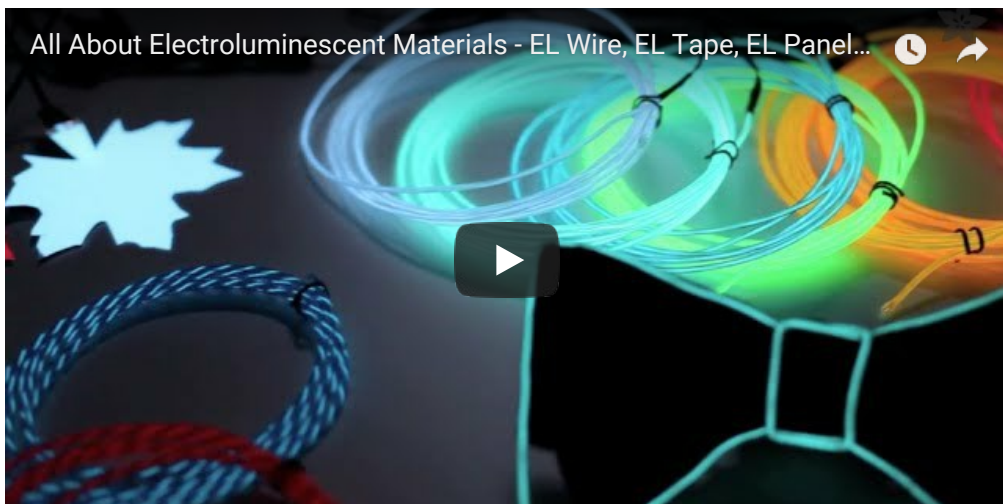
You can attach it by sewing through the clear plastic edging, or gluing the back to a flat surface. It is flexible but will crease and damage if folded. You can cut the panel up as long as the shape you cut out is continuous and has the JST cable attached.

This panel is a slightly blue-tinted white color when lit and appears pink when off.

Like all EL products, an inverter is **REQUIRED** to operate the panel Because EL tape has more surface area than wire, it requires a more powerful inverter. We suggest you use [our 4xAAA inverter which is strong enough to power a single panel at once](#) - plug it in and turn it

on! For more permanent installations, the [12V EL inverter](#) can also power a single panel and run off 8xAA batteries or a wall adapter.

Please note! EL tape, EL wire and EL panel are made with different processes and so the color and brightness will not be consistent between the two: white tape, white wire and white panels will not necessarily match!



TECHNICAL DETAILS

- Glow Size: 10 cm x 10 cm (3.95" x 3.95")
- Plastic Size: 10.4 cm x 10.4 cm (4.1" x 4.1"), about 0.5mm thick
- Panel lifetime: >25000 hours
- Operating voltage: 60-250VAC
- Operating Frequency: 50-5000HZ
- Current Draw: 0.14mA/cm² (max) @ 110V / 400Hz
- Initial Brightness: 75 cd/m²
- Operating Temperature: -50 C / 65 C
- 45 nF per panel

LEARN



[Glowing Star Chuck Taylor Sneakers](#)

Pumped up kicks

SUPPORT

DISTRIBUTORS

EDUCATORS

JOBS

FAQ

SHIPPING & RETURNS

TERMS OF SERVICE

PRIVACY & LEGAL

ABOUT US

door" - Milton Berle



ENGINEERED IN NYC Adafruit®

4.9 ★★★★★
Google
Customer Reviews