

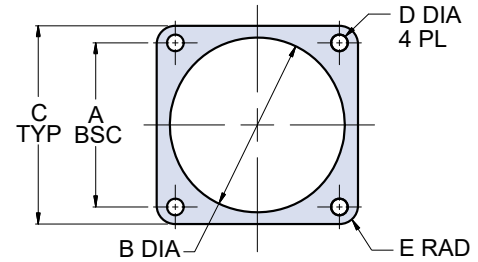
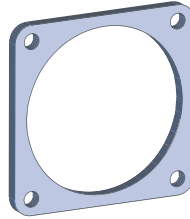


SERIES 80 MIGHTY MOUSE CONNECTORS  
**Accessories, Backshells, and Tools**  
**Flange Gaskets**



**FLANGE GASKETS FOR SERIES 800 MIGHTY MOUSE SQUARE FLANGE RECEPTACLES**

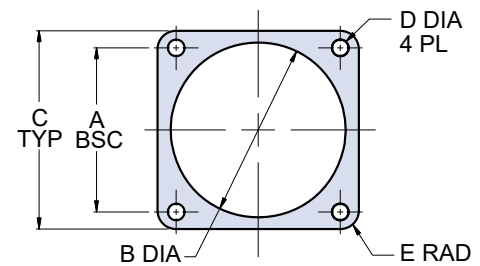
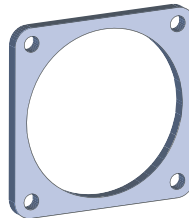
These flange gaskets provide sealing between square flange receptacles and the mounting panel. Choose fluorosilicone, Viton®, or conductive fluorosilicone material (Chomerics 1298 silver-filled). Gaskets are .032" (0.8) thick.



Shell Size	Part Number			Dimensions									
	Fluorosilicone	Viton®	Conductive Fluorosilicone	A Bsc.		B Dia.		C Typ.		D Dia.		E Rad.	
				In.	mm.	In.	mm.	In.	mm.	In.	mm.	In.	mm.
5	809-108F01	809-108V01	809-108X01	.363	9.22	.342	8.69	.527	13.39	.093	2.36	.078	1.98
6	809-108F02	809-108V02	809-108X02	.423	10.74	.405	10.29	.588	14.94	.093	2.36	.078	1.98
7	809-108F03	809-108V03	809-108X03	.483	12.27	.467	11.86	.650	16.51	.125	3.18	.078	1.98
8	809-108F04	809-108V04	809-108X04	.542	13.77	.530	13.46	.709	18.01	.125	3.18	.078	1.98
9	809-108F05	809-108V05	809-108X05	.719	18.26	.593	15.06	.938	23.83	.125	3.18	.105	2.67
10	809-108F06	809-108V06	809-108X06	.719	18.26	.655	16.64	.938	23.83	.125	3.18	.105	2.67
12	809-108F07	809-108V07	809-108X07	.812	20.62	.780	19.81	1.031	26.19	.125	3.18	.105	2.67

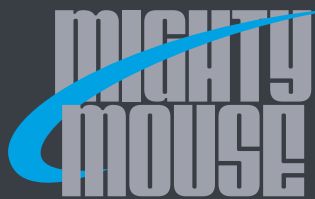
**FLANGE GASKETS FOR SERIES 801 MIGHTY MOUSE SQUARE FLANGE RECEPTACLES**

These flange gaskets provide sealing between square flange receptacles and the mounting panel. Choose fluorosilicone, Viton®, or conductive fluorosilicone material (Chomerics 1298 silver-filled). Gaskets are .032" (0.8) thick.



Shell Size	Part Number			Dimensions									
	Fluorosilicone	Viton®	Conductive Fluorosilicone	A Bsc.		B Dia.		C Typ.		D Dia.		E Rad.	
				In.	mm.	In.	mm.	In.	mm.	In.	mm.	In.	mm.
5	809-108F11	809-108V11	809-108X11	.363	9.22	.342	8.69	.530	13.46	.093	2.36	.078	1.98
6	809-108F12	809-108V12	809-108X12	.423	10.74	.405	10.29	.590	14.99	.093	2.36	.078	1.98
7	809-108F13	809-108V13	809-108X13	.483	12.27	.467	11.86	.650	16.51	.093	2.36	.078	1.98
8	809-108F14	809-108V14	809-108X14	.545	13.84	.530	13.46	.712	18.08	.093	2.36	.078	1.98
9	809-108F16	809-108V16	809-108X16	.607	15.42	.560	14.22	.850	21.59	.125	3.18	.105	2.67
10	809-108F15	809-108V15	809-108X15	.670	17.02	.655	16.64	.890	22.61	.125	3.18	.105	2.67
11	809-108F45	809-108V45	809-108X45	.715	18.16	.717	18.21	.935	23.75	.125	3.18	.105	2.67
13	809-108F17	809-108V17	809-108X17	.812	20.62	.842	21.39	1.030	26.16	.125	3.18	.105	2.67
16	809-108F18	809-108V18	809-108X18	.981	24.92	1.030	26.16	1.219	30.96	.125	3.18	.105	2.67
17	809-108F19	809-108V19	809-108X19	1.060	26.92	1.092	27.74	1.280	32.51	.125	3.18	.105	2.67
19	809-108F44	809-108V44	809-108X44	1.191	30.25	1.218	30.94	1.432	36.37	.125	3.18	.105	2.67
21	809-108F43	809-108V43	809-108X43	1.322	33.58	1.332	33.83	1.570	39.88	.125	3.18	.105	2.67

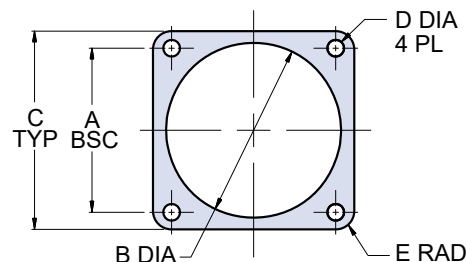
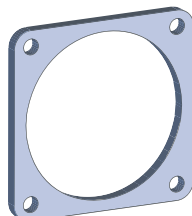
ACCESSORIES, BACKSHELLS, AND TOOLS



## Flange Gaskets

### FLANGE GASKETS FOR SERIES 802 MIGHTY MOUSE SQUARE FLANGE RECEPTACLES

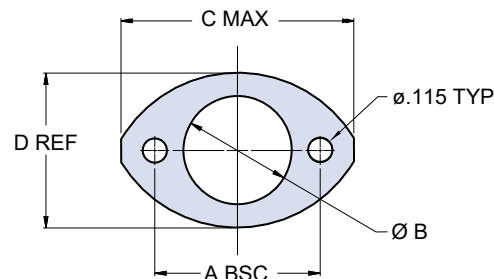
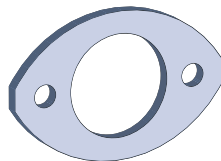
These flange gaskets provide sealing between square flange receptacles and the mounting panel. Choose fluorosilicone, Viton®, or neoprene material. Gaskets are .032" (0.8) thick.



Shell Size	Part Number			Dimensions									
	Fluorosilicone	Viton®	Neoprene	A Bsc.		B Dia.		C Typ.		D Dia.		E Rad.	
				In.	mm.	In.	mm.	In.	mm.	In.	mm.	In.	mm.
5	809-108F51	809-108V51	809-108N51	.500	12.70	.448	11.38	.885	22.48	.125	3.18	.105	2.67
6	809-108F52	809-108V52	809-108N52	.625	15.88	.572	14.53	1.010	25.65	.125	3.18	.105	2.67
7	809-108F53	809-108V53	809-108N53	.688	17.48	.635	16.13	1.072	27.23	.125	3.18	.105	2.67
8	809-108F54	809-108V54	809-108N54	.750	19.05	.698	17.73	1.135	28.83	.125	3.18	.105	2.67
9	809-108F55	809-108V55	809-108N55	.812	20.62	.760	19.30	1.195	30.35	.125	3.18	.105	2.67
10	809-108F56	809-108V56	809-108N56	.875	22.23	.822	20.88	1.260	32.00	.125	3.18	.105	2.67
12	809-108F57	809-108V57	809-108N57	.938	23.83	.885	22.48	1.323	33.60	.125	3.18	.105	2.67
14	809-108F58	809-108V58	809-108N58	1.125	28.58	1.072	27.23	1.510	38.35	.125	3.18	.105	2.67
15	809-108F59	809-108V59	809-108N59	1.188	30.18	1.135	28.83	1.573	39.95	.125	3.18	.105	2.67
21	809-108F60	809-108V60	809-108N60	1.375	34.93	1.448	36.78	1.760	44.70	.125	3.18	.105	2.67

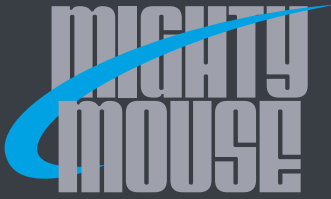
### FLANGE GASKETS FOR SERIES 803 MIGHTY MOUSE RECEPTACLES

These flange gaskets provide sealing between elliptical flange receptacles and the mounting panel. Choose fluorosilicone, Viton®, or conductive fluorosilicone material (Chomerics 1298 silver-filled). Gaskets are .032" (0.8) thick.



Shell Size	Part Number			Dimensions							
	Fluorosilicone	Viton®	Conductive Fluorosilicone	A Bsc.		B Dia.		C Max.		D Ref.	
				In.	mm.	In.	mm.	In.	mm.	In.	mm.
5	809-108F31	809-108V31	809-108X31	.513	13.03	.345	8.00	.710	18.03	.460	11.68
6	809-108F32	809-108V32	809-108X32	.598	15.19	.405	10.29	.795	20.19	.522	13.26
7	809-108F33	809-108V33	809-108X33	.708	17.98	.475	12.07	.900	22.86	.590	14.99
8	809-108F34	809-108V34	809-108X34	.964	24.51	.545	13.84	1.160	29.46	.670	17.02
9	809-108F35	809-108V35	809-108X35	1.017	25.83	.605	15.37	1.215	30.86	.721	18.31
10	809-108F36	809-108V36	809-108X36	1.101	27.97	.682	17.32	1.295	32.89	.795	20.19
12	809-108F37	809-108V37	809-108X37	1.204	30.58	.757	19.23	1.400	35.56	.874	22.20
14	809-108F38	809-108V38	809-108X38	1.280	32.51	.910	23.11	1.555	39.50	1.050	26.67
15	809-108F39	809-108V39	809-108X39	1.370	34.80	.970	24.64	1.640	41.66	1.150	29.21

ACCESSORIES, BACKSHELLS, AND TOOLS

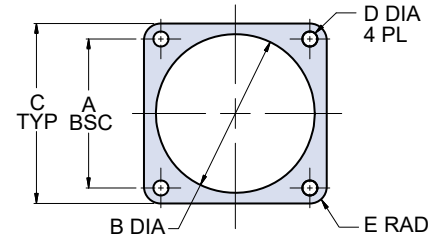
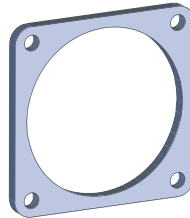


SERIES 80 MIGHTY MOUSE CONNECTORS  
**Accessories, Backshells, and Tools**  
**Flange Gaskets**



**FLANGE GASKETS FOR SERIES 805 MIGHTY MOUSE SQUARE FLANGE RECEPTACLES**

These flange gaskets provide sealing between square flange receptacles and the mounting panel. Choose fluorosilicone, Viton®, or conductive fluorosilicone material (Chomerics 1298 silver-filled). Gaskets are .032" (0.8) thick.



Shell Size	Part Number			Dimensions				
	Fluorosilicone	Viton®	Conductive Fluorosilicone	A Bsc.	B Dia.	C Typ.	D Dia.	E Rad.
8	<a href="#">809-108F20</a>	<a href="#">809-108V20</a>	<a href="#">809-108X20</a>	.660 (16.76)	.530 (13.46)	.850 (21.59)	.093 (2.36)	.078 (1.98)
9	<a href="#">809-108F21</a>	<a href="#">809-108V21</a>	<a href="#">809-108X21</a>	.723 (18.36)	.590 (14.99)	.913 (23.19)	.093 (2.36)	.078 (1.98)
10	<a href="#">809-108F22</a>	<a href="#">809-108V22</a>	<a href="#">809-108X22</a>	.785 (19.94)	.660 (16.76)	.975 (24.76)	.093 (2.36)	.078 (1.98)
11	<a href="#">809-108F23</a>	<a href="#">809-108V23</a>	<a href="#">809-108X23</a>	.848 (21.54)	.720 (18.29)	1.039 (26.39)	.093 (2.36)	.078 (1.98)
12	<a href="#">809-108F24</a>	<a href="#">809-108V24</a>	<a href="#">809-108X24</a>	.909 (23.09)	.780 (19.81)	1.099 (27.91)	.093 (2.36)	.078 (1.98)
13	<a href="#">809-108F29</a>	<a href="#">809-108V29</a>	<a href="#">809-108X29</a>	.973 (24.71)	.842 (21.39)	1.163 (29.54)	.093 (2.36)	.078 (1.98)
15	<a href="#">809-108F25</a>	<a href="#">809-108V25</a>	<a href="#">809-108X25</a>	1.058 (26.87)	.970 (24.64)	1.288 (32.72)	.125 (3.18)	.105 (2.67)
18	<a href="#">809-108F26</a>	<a href="#">809-108V26</a>	<a href="#">809-108X26</a>	1.255 (31.88)	1.160 (29.46)	1.475 (37.47)	.125 (3.18)	.105 (2.67)
19	<a href="#">809-108F27</a>	<a href="#">809-108V27</a>	<a href="#">809-108X27</a>	1.327 (33.71)	1.220 (30.99)	1.537 (39.04)	.125 (3.18)	.105 (2.67)
21	<a href="#">809-108F30</a>	<a href="#">809-108V30</a>	<a href="#">809-108X30</a>	1.452 (36.88)	1.342 (34.09)	1.663 (42.24)	.125 (3.18)	.105 (2.67)
23	<a href="#">809-108F28</a>	<a href="#">809-108V28</a>	<a href="#">809-108X28</a>	1.570 (39.88)	1.458 (37.03)	1.797 (45.64)	.125 (3.18)	.105 (2.67)