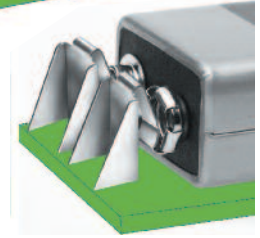
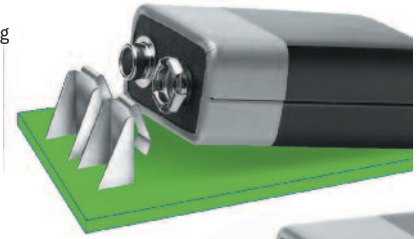
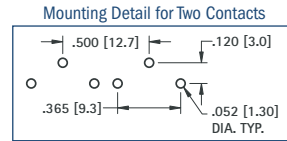
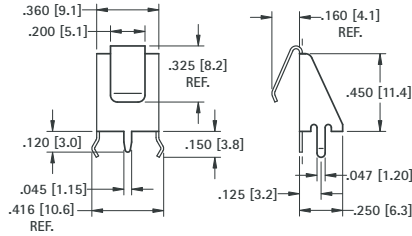


# HORIZONTAL 9 VOLT PC LEAF-SPRING CONTACT

- Ideal "Slide-In" contact for easy installation and removal of 9 Volt batteries
- Space saving design installs directly onto the PC board
- Suitable for .062 (1.57) to .093 (2.36) PC boards
- Reliable leaf-spring assures low contact resistance
- Ideal for self-contained battery compartments
- Snap-in mounting legs holds contact secure during wave soldering

**MATERIAL:** .012 (.30) Spring Steel, Tin-Nickel Plate

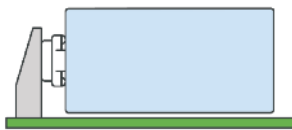


**CAT. NO. 590**

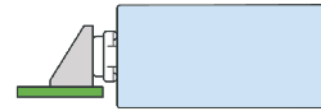
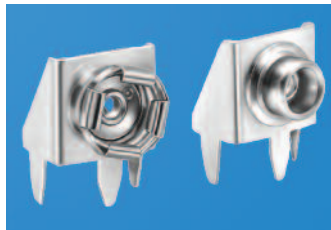
# HORIZONTAL 9 VOLT PC SNAP-ON CONTACTS

**Mounts Directly to Printed Circuit Board**

- Space saving design installs directly onto the PC board
- Suitable for .062 (1.57) to .093 (2.36) PC boards
- Ideal for self-contained battery compartments



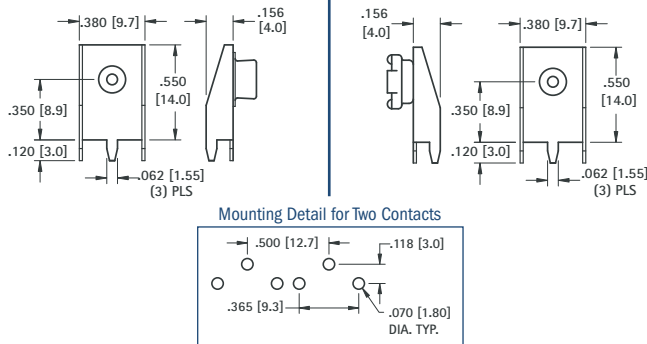
To Mount Battery "On" PC Board  
Use Cat. No. 593 and Cat. No. 594



To Mount Battery "Off" PC Board  
Use Cat. No. 635 and Cat. No. 636

**MATERIAL:** Frame: .015 (.38) Steel, Tin Plate; Contacts: Steel, Nickel Plate

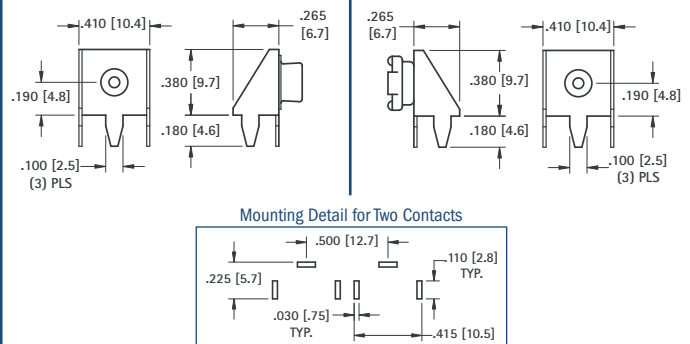
**"On-Board"**



**CAT. NO. 593 (Male)**

**CAT. NO. 594 (Female)**

**"Off-Board"**



**CAT. NO. 635 (Male)**

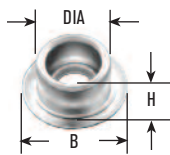
**CAT. NO. 636 (Female)**

# BATTERY SNAP-ONS

For most electronic applications requiring a quick connect and disconnect of circuit. Commonly used with 9 Volt or other batteries designed with snap fasteners. Ideal for temporary or permanent means of connecting without soldering. Can be cascaded together for multiple connections.

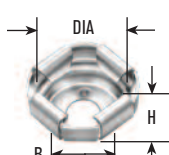
**SOCKET OR STUD ONLY**

**FIG. 1**



Stud only

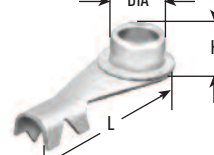
**FIG. 2**



Socket only

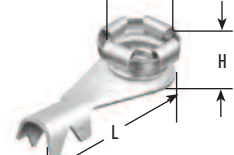
**SOCKET OR STUD W/CRIMP LUG**

**FIG. 3**



Stud w/Crimp Lug

**FIG. 4**



Socket w/Crimp Lug

CAT. NO.	FIG. NO.	DIA	H	B	HOLE	SIZE	MATERIAL
261*	1	.224 (5.7)	.135 (3.4)	.312 (7.9)	.097 (2.5)	Junior*	Steel, Nickel Plate
269*	2	.210 (5.3)	.150 (3.8)	.250 (6.4)	.096 (2.4)		
262	1	.283 (7.2)	.143 (3.6)	.423 (10.7)	.125 (3.2)	Senior	Brass, Nickel Plate
270	2	.261 (6.6)	.145 (3.7)	.312 (7.9)	.125 (3.2)		

CAT. NO.	FIG. NO.	DIA	H	L	SIZE	MATERIAL
263*	3	.225 (5.7)	.170 (4.3)	.790 (20.1)	Junior*	Stud: Steel, Nickel Plate Lug: Brass, Tin Plate
271*	4	.205 (5.2)	.200 (5.1)	.790 (20.1)		
264	3	.283 (7.2)	.185 (4.7)	.840 (21.3)	Senior	Stud: Brass, Nickel Plate Lug: Brass, Tin Plate
272	4	.265 (6.7)	.185 (4.7)	.835 (21.2)		

\*Use Jr. Socket and stud for standard 9 Volt Battery

DIMENSIONS ARE FOR REFERENCE ONLY

\*Use Jr. Socket and stud for standard 9 Volt Battery

9 VOLT BATTERY CONTACTS