

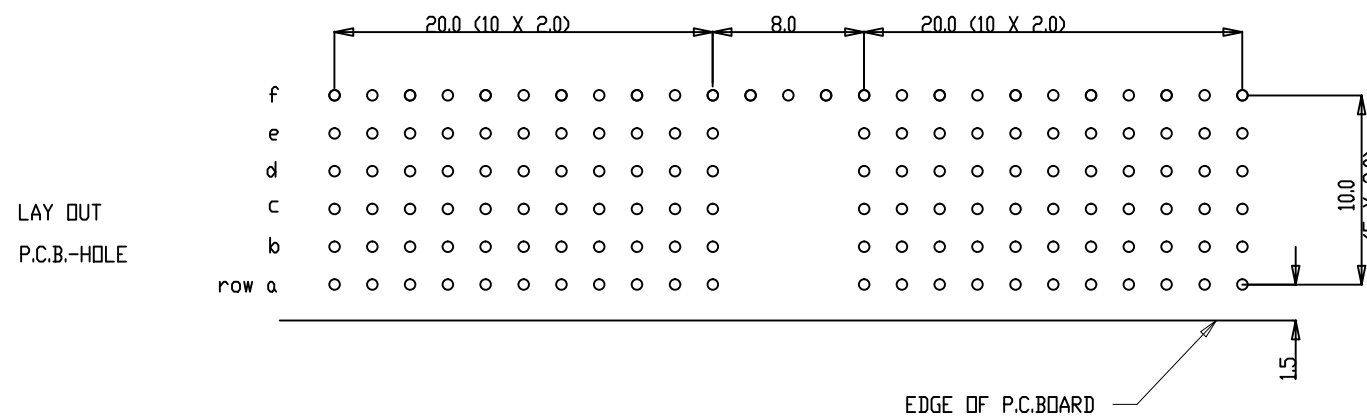
PERFORMANCE CHARACTERISTICS

CURRENT RATING 1.5 A AT 20°C (FULLY LOADED)
1 A AT 70°C (FULLY LOADED)

RATED VOLTAGE 500V AC (CONT / CONT)
OPERATING TEMPERATURE -55°C TO 125°C
CONTACT RESISTANCE 20 mΩ MAX
INSERTION FORCE :0.75 N MAX /CONT
EXTRACTION FORCE: 0.15 N MIN /CONT
INSULATION RESISTANCE :10⁴ MΩ MIN

NOTES

- LEAD FREE INDICATOR : LF- LEAD FREE
- PERFORMANCE LEVEL INDICATOR (REF DWG No. BS,C,201844,003)
- THIS PRODUCT IS CSA APPROVED
THIS PRODUCT IS UL RECOGNISED
- FOR RECOMMENDED PTH DIMENSIONS REFER DRAWING: BSA,201,572001
AND OTHER COUNTRY REGULATIONS AS DESCRIBED IN GS-47-0004.



mat'l. code		surface		tolerance		projection		product family	
SEE NOTE 4		ISO 1302 ✓		ISO 406 ISO 1101		MM		MILLIPACS	
ltr	ecn no	dr	date	tolerances unless otherwise specified		MM		title	
A	113-0025	AKA	2013-10-19	angles	linear	MM		MPACS 5+2R RA REC PF CONN TYPE A (HM2R10PA510F--M--)	
B	ELX-I-16123	AKA	2013-10-23	0°±1°		scale -			
				dr	ARJUN K A	2013-10-19	FCI	dwg no	
				enr	ARJUN K A	2013-10-19		sheet 1 of 1 size	
				chr	ALEX BABU	2013-10-19		5	
				appd	BIJU K PAUL	2013-10-19		A3	
sheet index	revision sheet	B	1					type Product Customer Drawing	