

1 | 2 | 3 | 4

PRODUCT NUMBER
51968-A00CCC00EF--
SEE NOTE 1

DIM	LENGTH FORMULAS (SEE NOTE 8)
DIM "A"	.100 [2.54] x (CCC/4) + .650 [16.51] (NOTE 8)
DIM "B"	.100 [2.54] x (CCC/4) + .350 [8.89]
DIM "C"	.100 [2.54] x (CCC/4) + .300 [7.62]
DIM "D"	.100 [2.54] x (CCC/4) + .680 [17.27]

CONNECTOR NOTES

- 1. PRODUCT NUMBER CODE:
 51968 - A 00 CCC 00 E F LF
 W/O THIS SUFFIX: 100µ"/2.54µm SnPb ON PCB INTERFACE
 WITH THIS SUFFIX: 78µ"/2.00µm Sn ON PCB INTERFACE
 RETENTION TO PCB (NOTE 6)
 TAIL OPTIONS (NOTE 5)
 ALWAYS "00" (ZERO, ZERO)
 NUMBER OF SIGNAL CONTACTS (NOTE 4)
 ALWAYS "00" (ZERO, ZERO)
 PLATING (NOTE 3)
 BASE NUMBER

- 2. HOUSING MATERIAL: GLASS FILLED V-O HIGH TEMP THERMO PLASTIC.
 SIGNAL CONTACT MATERIAL: COPPER ALLOY
- 3. PLATING OPTION:
 I = SEE PRINT 10064183 FOR PLATING SPEC OF 51968-100CCC00EFL
- 4. SIGNAL CONTACTS, 004 TO 148 AVAILABLE FOR SOLDER TO BOARD
 020 TO 148 AVAILABLE FOR PRESS-FIT TO BOARD.
- 5. TAIL OPTIONS:
 A = .135 ±.010 [3.43 ±.25] SOLDER TO BOARD
 B = .090 ±.005 / -.010 [2.29 +0.13 / -.25] SOLDER TO BOARD
 C = .154 ±.010 [3.91 ±.25] PRESS-FIT TO BOARD

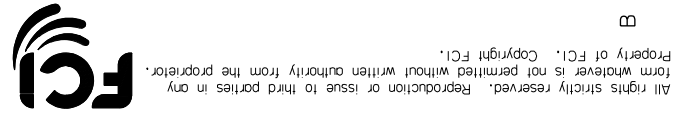
- 6. RETENTION TO PCB OPTIONS:
 A = BOARD LOCK (REQUIRES .098 ±.002 / -.001 [2.49 +0.05 / -0.03] THRU HOLE IN PCB MOUNTING FOOT HEIGHT: .220 [5.59])
 NOT AVAILABLE FOR PRESS-FIT
 B = .150 [3.81] THRU HOLE (REQUIRES .158 ±.0.003 [4.01 ±0.08] THRU HOLE IN PCB). MOUNTING FOOT HEIGHT: .160 [4.06]
 ALWAYS AVAILABLE FOR PRESS-FIT
- 7. MANUFACTURE'S NAME, P/N, AND DATE CODE TO APPEAR ON THIS SURFACE.
 THE MAXIMUM OVERALL LENGTH (DIM A) OF A PART IS 8.00 [203.2]
- 9. PRODUCT SPECIFICATION GS-12-149
- 10. APPLICATION SPECIFICATION BUS-20-067.
- 11. FOR PRESS-FIT CONNECTORS USE FCI CAM TOOL 430140-XXX TO APPLY CONNECTOR TO PCB.

- PCB NOTES:
- 12. ALL DIMENSIONS ARE BASIC UNLESS OTHERWISE SPECIFIED.
 - 13. ALL THROUGH HOLES ARE LOCATED WITH A TRUE POSITION OF .004 [0.10]
 - 14. ALL HOLE DIAMETERS ARE FINISHED HOLE SIZE.
 - 15. $\varnothing 0.0453 \pm .001$ [1.151 ±0.021] DRILLED HOLES PLATED WITH 0.0003 [0.0071] MIN SnPb OR Sn OVER 0.001 [1.03] TO .003 [0.08] Cu PLATING TO ACHIEVE A .040 ±.003 [1.02 ±0.08] HOLE.
 - 16. Δ SYMBOL WILL BE NEXT TO ANY DIMENSION, VIEW, OR NOTE WHICH HAS BEEN MODIFIED WITH THE CURRENT DRAWING REVISION.

THIS FILE WAS ORIGINALLY CREATED IN THE PRO ENGINEER ENVIRONMENT AND ANY FUTURE REVISIONS TO THIS FILE MUST BE MADE IN THE PRO ENGINEER ENVIRONMENT

form no. 7530-001-103

cage code 22526

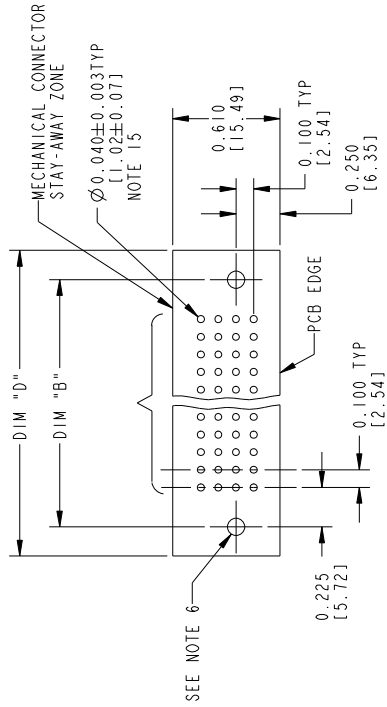
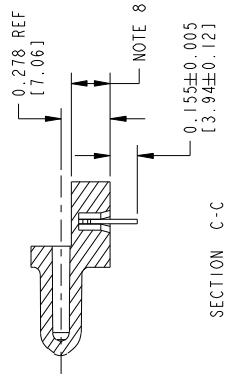
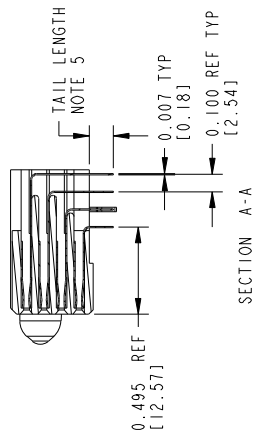


mat'l code		tolerances unless otherwise specified		CUSTOMER COPY		FCI www.fciconnect.com	
lir	ecm no.	dr	date	Projection		Title	
C				0° ± 2°		RIGHT ANGLE RECEPTACLE w/GUIDE PIN SIGNAL	
				dr		product family	
				engr		PwrBlade	
				chr		size	
				appd		dwg no	
sheet index	revision	sheet		Scale		code	
				1:2		213	
						SHEET 2 OF 3	
						A	
						51968	
						A	
						22526	
						4	

Tous droits strictement reserves. Reproduction ou communication a des tiers interdite sous quelque forme que ce soit sans autorisation ecrite du proprietaire. Property of FCI. Copyright FCI.

All rights strictly reserved. Reproduction or issue to third parties in any form whatever is not permitted without written authority from the proprietor. Property of FCI. Copyright FCI.

PRODUCT NUMBER
51968-A00CC000EF--
SEE NOTE 1



mat'l code		tolerances unless otherwise specified		CUSTOMER COPY		www.fciconnect.com	
lfr	ecn no.	dr	date	linear	projection	Title	
C				.XX±.01/.X±.3	1st ANGLE	RIGHT ANGLE RECEPTACLE w/GUIDE PIN	
				.XXX±.005/.XX±.13	2nd ANGLE	SIGNAL	
				.XXX±.020/.XX±.051	3rd ANGLE	PwrBlade code	
				0°±2°	INCH / MM	213	
				T. BRUNGARD 06/23/04	Scale	51968	
				M. GRAY 06/23/04	1:1	product family	
				M. GRAY 06/23/04		size	
				M. GRAY 06/23/04		dwg no	
Sheet index	revision	sheet				A	
						3 OF 3	
						cage code	
						22526	
						4	

form no. 7530-001-103

4

3

4

4

3

4

4

Tous droits strictement réservés. Reproduction ou communication à des tiers interdite sous quelque forme que ce soit sans autorisation écrite du propriétaire. Propriété de © FCI. Droits de reproduction FCI.



All rights strictly reserved. Reproduction or issue to third parties in any form whatever is not permitted without written authority from the proprietor. Property of FCI. Copyright FCI.