

UK 5-RETURN - Feed-through terminal block



3002597

<https://www.phoenixcontact.com/us/products/3002597>

Please be informed that the data shown in this PDF document is generated from our Online Catalog. Please find the complete data in the user documentation. Our General Terms of Use for Downloads are valid.



Universal terminal block with screw connection, cross section: 0.2 mm² ... 4 mm², AWG: 30 - 10, width: 6.2 mm, color: gray

Commercial Data

Item number	3002597
Packing unit	1 pc
Minimum order quantity	1 pc
Note	Made to Order (non-returnable)
Sales Key	BE12
Product Key	BE1211
Catalog Page	Page 227 (CL-2005)
GTIN	4017918090364
Weight per Piece (including packing)	11.216 g
Weight per Piece (excluding packing)	10.91 g
Customs tariff number	85369010
Country of origin	PL

UK 5-RETURN - Feed-through terminal block



3002597

<https://www.phoenixcontact.com/us/products/3002597>

Technical Data

Product properties

Product type	Feed-through terminal block
Number of connections	2
Number of rows	2
Potentials	1

Insulation characteristics

Overvoltage category	III
Degree of pollution	3

Electrical properties

Rated surge voltage	6 kV
---------------------	------

Connection data

Number of connections per level	2
---------------------------------	---

Level 1 above 1 below 1

Screw thread	M3
Tightening torque	0.6 ... 0.8 Nm
Stripping length	8 mm
Connection in acc. with standard	IEC / EN
Conductor cross section rigid	0.2 mm ² ... 6 mm ²
Cross section AWG	24 ... 10 (converted acc. to IEC)
Conductor cross section flexible	0.2 mm ² ... 4 mm ²
Conductor cross section, flexible [AWG]	24 ... 8 (converted acc. to IEC)
Conductor cross-section flexible (ferrule without plastic sleeve)	0.25 mm ² ... 4 mm ²
Flexible conductor cross section (ferrule with plastic sleeve)	0.25 mm ² ... 2.5 mm ²
Cross-section with insertion bridge, rigid	4 mm ²
Cross-section with insertion bridge, flexible	4 mm ²
2 conductors with same cross section, solid	0.2 mm ² ... 1.5 mm ²
2 conductors with same cross section, flexible	0.2 mm ² ... 1.5 mm ²
2 conductors with same cross section, flexible, with ferrule without plastic sleeve	0.25 mm ² ... 1.5 mm ²
2 conductors with the same cross section, flexible, with TWIN ferrule with plastic sleeve	0.5 mm ² ... 1.5 mm ²
Nominal current	41 A
Maximum load current	41 A (with 6 mm ² conductor cross section)
Nominal voltage	500 V
Connection in acc. with standard	UL
Cross section AWG	30 ... 10 (converted acc. to IEC)
Nominal current	30 A
Nominal voltage	300 V
Connection in acc. with standard	CSA

UK 5-RETURN - Feed-through terminal block



3002597

<https://www.phoenixcontact.com/us/products/3002597>

Nominal current	40 A
Nominal voltage	300 V

Dimensions

Width	6.2 mm
Height NS 35/15	66 mm
Height NS 35/7,5	58.5 mm
Height (inch)	2.303 "
Height NS 32	63.5 mm
Length	47.5 mm

Material specifications

Color	gray
Flammability rating according to UL 94	V2
Insulating material group	I
Insulating material	PA
Temperature index of insulation material (DIN EN 60216-1 (VDE 0304-21))	125 °C
Relative insulation material temperature index (Elec., UL 746 B)	125 °C

Electrical tests

Surge voltage test

Test voltage setpoint	7.3 kV
Result	Test passed

Temperature-rise test

Requirement temperature-rise test	Increase in temperature ≤ 45 K
Result	Test passed
Short-time withstand current 4 mm ²	0.48 kA
Short-time withstand current 6 mm ²	0.72 kA
Result	Test passed

Power-frequency withstand voltage

Test voltage setpoint	1.89 kV
Result	Test passed

Mechanical properties

Mechanical data

Open side panel	Yes
-----------------	-----

Mechanical tests

Mechanical strength

Result	Test passed
--------	-------------

Attachment on the carrier

UK 5-RETURN - Feed-through terminal block



3002597

<https://www.phoenixcontact.com/us/products/3002597>

DIN rail/fixing support	NS 32/NS 35
Test force setpoint	5 N
Result	Test passed

Test for conductor damage and slackening

Rotation speed	10 rpm
Revolutions	135
Conductor cross section/weight	0.2 mm ² / 0.2 kg
	4 mm ² / 0.9 kg
	6 mm ² / 1.4 kg
Result	Test passed

Environmental and real-life conditions

Needle-flame test

Time of exposure	30 s
Result	Test passed

Standards and regulations

Connection in acc. with standard	IEC / EN
	UL
	CSA

Mounting

Mounting type	NS 35/7,5
	NS 35/15
	NS 32

UK 5-RETURN - Feed-through terminal block

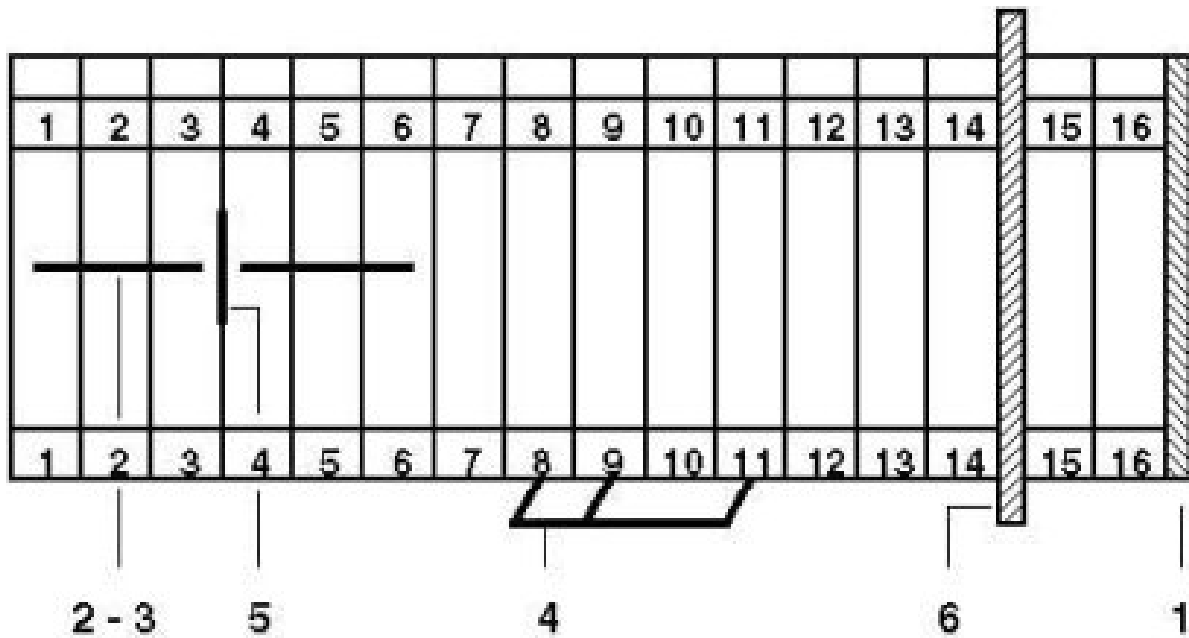


3002597

<https://www.phoenixcontact.com/us/products/3002597>

Drawings

Circuit diagram



UK 5-RETURN - Feed-through terminal block



3002597

<https://www.phoenixcontact.com/us/products/3002597>

Classifications

ETIM

ETIM 7.0	EC000897
----------	----------

UNSPSC

UNSPSC 21.0	39121410
-------------	----------

UK 5-RETURN - Feed-through terminal block



3002597

<https://www.phoenixcontact.com/us/products/3002597>

Environmental Product Compliance

China RoHS	Environmentally Friendly Use Period = 50 years For information on hazardous substances, refer to the manufacturer's declaration available under "Downloads"
------------	--

UK 5-RETURN - Feed-through terminal block



3002597

<https://www.phoenixcontact.com/us/products/3002597>

Accessories



Note: Applying some accessories below might limit this product.

IS-K 4 - Bridge bar isolator

1302338

<https://www.phoenixcontact.com/us/products/1302338>



Bridge bar isolator, color: gray

ISSBI 10- 6 - Bridge

0301505

<https://www.phoenixcontact.com/us/products/0301505>



Bridge, pitch: 6 mm, number of positions: 10, color: silver

UK 5-RETURN - Feed-through terminal block

3002597

<https://www.phoenixcontact.com/us/products/3002597>



LB 10-6 BU - Bridge

0202280

<https://www.phoenixcontact.com/us/products/0202280>



Bridge, pitch: 6 mm, number of positions: 10, color: blue

LB 10-6 RD - Bridge

0202293

<https://www.phoenixcontact.com/us/products/0202293>



Bridge, pitch: 6 mm, number of positions: 10, color: red

UK 5-RETURN - Feed-through terminal block

3002597

<https://www.phoenixcontact.com/us/products/3002597>



LB 10-6 GY - Bridge

0202358

<https://www.phoenixcontact.com/us/products/0202358>



Bridge, pitch: 6 mm, number of positions: 10, color: gray

LB 100-6 GY - Bridge

0202345

<https://www.phoenixcontact.com/us/products/0202345>



Bridge, pitch: 6 mm, number of positions: 100, color: gray

UK 5-RETURN - Feed-through terminal block

3002597

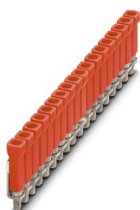
<https://www.phoenixcontact.com/us/products/3002597>



LB 100-6 RD - Bridge

0202316

<https://www.phoenixcontact.com/us/products/0202316>

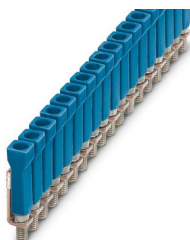


Bridge, number of positions: 100, color: red

LB 100-6 BU - Bridge

0202303

<https://www.phoenixcontact.com/us/products/0202303>



Bridge, number of positions: 100, color: blue

UK 5-RETURN - Feed-through terminal block

3002597

<https://www.phoenixcontact.com/us/products/3002597>




FBI 10- 6 - Fixed bridge

0203250

<https://www.phoenixcontact.com/us/products/0203250>



Fixed bridge, pitch: 6.2 mm, number of positions: 10, color: silver

 Max. current carrying capacity: 33 A

FBI 100- 6 - Fixed bridge

0201650

<https://www.phoenixcontact.com/us/products/0201650>



Fixed bridge, pitch: 6.2 mm, number of positions: 100, color: silver

UK 5-RETURN - Feed-through terminal block

3002597

<https://www.phoenixcontact.com/us/products/3002597>



FBI 20- 6 - Fixed bridge

0201867

<https://www.phoenixcontact.com/us/products/0201867>



Fixed bridge, pitch: 6.2 mm, number of positions: 20, color: silver

EB 2- 6 - Insertion bridge

0201155

<https://www.phoenixcontact.com/us/products/0201155>



Insertion bridge, pitch: 6.2 mm, number of positions: 2, color: gray

 Max. current carrying capacity: 33 A

UK 5-RETURN - Feed-through terminal block

3002597

<https://www.phoenixcontact.com/us/products/3002597>




EB 3- 6 - Insertion bridge

0201142

<https://www.phoenixcontact.com/us/products/0201142>

Insertion bridge, pitch: 6.2 mm, number of positions: 3, color: gray



 Max. current carrying capacity: 33 A


EB 10- 6 - Insertion bridge

0201139

<https://www.phoenixcontact.com/us/products/0201139>

Insertion bridge, pitch: 6.2 mm, number of positions: 10, color: gray



 Max. current carrying capacity: 33 A

UK 5-RETURN - Feed-through terminal block

3002597

<https://www.phoenixcontact.com/us/products/3002597>



D-UK 3-RETURN - End cover

3002539

<https://www.phoenixcontact.com/us/products/3002539>



End cover, length: 47.5 mm, width: 1.5 mm, height: 58.5 mm, color: gray

FB-150

METER - Fixed bridge

0201595

<https://www.phoenixcontact.com/us/products/0201595>



Cross connection rail, for fixed bridging of identical inputs and outputs, made of Cu, nickel-plated, 1 m long

UK 5-RETURN - Feed-through terminal block

3002597

<https://www.phoenixcontact.com/us/products/3002597>



KSS 3- 6 - Short-circuit connector

0309523

<https://www.phoenixcontact.com/us/products/0309523>



Short-circuit connector, pitch: 6 mm, number of positions: 3, color: black

KSS 6 - Short-circuit connector

0301547

<https://www.phoenixcontact.com/us/products/0301547>



Short-circuit connector, pitch: 6 mm, number of positions: 2, color: black

UK 5-RETURN - Feed-through terminal block

3002597

<https://www.phoenixcontact.com/us/products/3002597>



RPS - Reducing plug

0201647

<https://www.phoenixcontact.com/us/products/0201647>



Reducing plug, number of positions: 1, color: gray

TS-UK 3-RETURN - Separating plate

3002526

<https://www.phoenixcontact.com/us/products/3002526>



Separating plate, width: 0.5 mm, color: gray

UK 5-RETURN - Feed-through terminal block



3002597

<https://www.phoenixcontact.com/us/products/3002597>

ATP-UK 3-RETURN - Partition plate

3002542

<https://www.phoenixcontact.com/us/products/3002542>



Partition plate, length: 49.1 mm, width: 1.5 mm, height: 69.5 mm, color: gray

SBS 6:UNBEDRUCKT - Marker card

1007222

<https://www.phoenixcontact.com/us/products/1007222>



Marker card, Card, white, unlabeled, can be labeled with: Marker pen, mounting type: snapped, snap into flat marker groove, for terminal block width: 6 mm, lettering field size: 6 x 6.1 mm, Number of individual labels: 250

UK 5-RETURN - Feed-through terminal block



3002597

<https://www.phoenixcontact.com/us/products/3002597>

NS 32 PERF 2000MM-VPE 10 - DIN rail perforated

1201002

<https://www.phoenixcontact.com/us/products/1201002>



DIN rail perforated, acc. to EN 60715, material: Steel, galvanized, passivated with a thick layer, G profile, color: silver, Pack of 10 (20 m)

NS 32 UNPERF 2000MM-VPE 10 - DIN rail, unperforated

1201015

<https://www.phoenixcontact.com/us/products/1201015>



DIN rail, unperforated, acc. to EN 60715, material: Steel, galvanized, passivated with a thick layer, G profile, color: silver, Pack of 10 (20 m)

UK 5-RETURN - Feed-through terminal block



3002597

<https://www.phoenixcontact.com/us/products/3002597>

NS 35/ 7,5 PERF 2000MM - DIN rail perforated

0801733

<https://www.phoenixcontact.com/us/products/0801733>



DIN rail perforated, acc. to EN 60715, material: Steel, galvanized, passivated with a thick layer, Standard profile, color: silver, Pack of 25 (50 m)

NS 35/ 7,5 UNPERF 2000MM - DIN rail, unperforated

0801681

<https://www.phoenixcontact.com/us/products/0801681>



DIN rail, unperforated, acc. to EN 60715, material: Steel, galvanized, passivated with a thick layer, Standard profile, color: silver, Pack of 25 (50 m)

UK 5-RETURN - Feed-through terminal block



3002597

<https://www.phoenixcontact.com/us/products/3002597>

NS 35/ 7,5 WH PERF 2000MM - DIN rail perforated

1204119

<https://www.phoenixcontact.com/us/products/1204119>



DIN rail perforated, acc. to EN 60715, material: Steel, Galvanized, white passivated, Standard profile, color: silver, Pack of 25 (50 m)

NS 35/ 7,5 WH UNPERF 2000MM-VPE 10 - DIN rail, unperforated

1204122

<https://www.phoenixcontact.com/us/products/1204122>



DIN rail, unperforated, acc. to EN 60715, material: Steel, Galvanized, white passivated, Standard profile, color: silver, Pack of 10 (20 m)

UK 5-RETURN - Feed-through terminal block



3002597

<https://www.phoenixcontact.com/us/products/3002597>

NS 35/ 7,5 AL UNPERF 2000MM - DIN rail, unperforated

0801704

<https://www.phoenixcontact.com/us/products/0801704>



DIN rail, unperforated, acc. to EN 60715, material: Aluminum, uncoated, Standard profile, color: silver, Pack of 25 (50 m)

NS 35/ 7,5 ZN PERF 2000MM - DIN rail perforated

1206421

<https://www.phoenixcontact.com/us/products/1206421>



DIN rail perforated, acc. to EN 60715, material: Steel, galvanized, Standard profile, color: silver, Pack of 25 (50 m)

UK 5-RETURN - Feed-through terminal block

3002597

<https://www.phoenixcontact.com/us/products/3002597>



NS 35/ 7,5 ZN UNPERF 2000MM - DIN rail, unperforated

1206434

<https://www.phoenixcontact.com/us/products/1206434>



DIN rail, unperforated, acc. to EN 60715, material: Steel, galvanized, Standard profile, color: silver, Pack of 25 (50 m)

NS 35/ 7,5 CU UNPERF 2000MM-VPE 10 - DIN rail, unperforated

0801762

<https://www.phoenixcontact.com/us/products/0801762>



DIN rail, unperforated, acc. to EN 60715, material: Copper, uncoated, Standard profile, color: copper-colored, Pack of 10 (20 m)

UK 5-RETURN - Feed-through terminal block

3002597

<https://www.phoenixcontact.com/us/products/3002597>



NS 35/ 7,5 CAP - End cap

1206560

<https://www.phoenixcontact.com/us/products/1206560>

DIN rail end piece, for DIN rail NS 35/7.5



NS 35/15 PERF 2000MM - DIN rail perforated

1201730

<https://www.phoenixcontact.com/us/products/1201730>



DIN rail perforated, similar to EN 60715, material: Steel, galvanized, passivated with a thick layer, Standard profile, color: silver, Pack of 25 (50 m)

UK 5-RETURN - Feed-through terminal block

3002597

<https://www.phoenixcontact.com/us/products/3002597>



NS 35/15 UNPERF 2000MM - DIN rail, unperforated

1201714

<https://www.phoenixcontact.com/us/products/1201714>



DIN rail, unperforated, similar to EN 60715, material: Steel, galvanized, passivated with a thick layer, Standard profile, color: silver, Pack of 25 (50 m)

NS 35/15 WH PERF 2000MM - DIN rail perforated

0806602

<https://www.phoenixcontact.com/us/products/0806602>



DIN rail perforated, similar to EN 60715, material: Steel, Galvanized, white passivated, Standard profile, color: white, Pack of 25 (50 m)

UK 5-RETURN - Feed-through terminal block

3002597

<https://www.phoenixcontact.com/us/products/3002597>



NS 35/15 WH UNPERF 2000MM-VPE 10 - DIN rail, unperforated

1204135

<https://www.phoenixcontact.com/us/products/1204135>



DIN rail, unperforated, similar to EN 60715, material: Steel, Galvanized, white passivated, Standard profile, color: silver, Pack of 10 (20 m)

NS 35/15 AL UNPERF 2000MM - DIN rail, unperforated

1201756

<https://www.phoenixcontact.com/us/products/1201756>



DIN rail, unperforated, similar to EN 60715, material: Aluminum, uncoated, Standard profile, color: silver

UK 5-RETURN - Feed-through terminal block

3002597

<https://www.phoenixcontact.com/us/products/3002597>



NS 35/15 ZN PERF 2000MM - DIN rail perforated

1206599

<https://www.phoenixcontact.com/us/products/1206599>



DIN rail perforated, similar to EN 60715, material: Steel, galvanized, Standard profile, color: silver, Pack of 25 (50 m)

NS 35/15 ZN UNPERF 2000MM - DIN rail, unperforated

1206586

<https://www.phoenixcontact.com/us/products/1206586>



DIN rail, unperforated, similar to EN 60715, material: Steel, galvanized, Standard profile, color: silver, Pack of 25 (50 m)

UK 5-RETURN - Feed-through terminal block



3002597

<https://www.phoenixcontact.com/us/products/3002597>

NS 35/15 CU UNPERF 2000MM-VPE 10 - DIN rail, unperforated

1201895

<https://www.phoenixcontact.com/us/products/1201895>



DIN rail, unperforated, similar to EN 60715, material: Copper, uncoated, Standard profile, color: copper-colored, Pack of 10 (20 m)

NS 35/15 CAP - End cap

1206573

<https://www.phoenixcontact.com/us/products/1206573>

DIN rail end piece, for DIN rail NS 35/15



UK 5-RETURN - Feed-through terminal block

3002597

<https://www.phoenixcontact.com/us/products/3002597>



NS 35/15-2,3 UNPERF 2000MM-VPE 10 - DIN rail, unperforated

1201798

<https://www.phoenixcontact.com/us/products/1201798>



DIN rail, unperforated, acc. to EN 60715, material: Steel, galvanized, passivated with a thick layer, Standard profile 2.3 mm, color: silver, Pack of 10 (20 m)

ZB 6:UNBEDRUCKT - Zack marker strip

1051003

<https://www.phoenixcontact.com/us/products/1051003>



Zack marker strip, Strip, white, unlabeled, can be labeled with: PLOTMARK, CMS-P1-PLOTTER, mounting type: snapped, for terminal block width: 6.2 mm, lettering field size: 6.15 x 10.5 mm, Number of individual labels: 10

UK 5-RETURN - Feed-through terminal block



3002597

<https://www.phoenixcontact.com/us/products/3002597>

ZB 6 CUS - Zack marker strip

0824992

<https://www.phoenixcontact.com/us/products/0824992>



Zack marker strip, can be ordered: Strip, white, labeled according to customer specifications, mounting type: snap into tall marker groove, for terminal block width: 6.2 mm, lettering field size: 6.15 x 10.5 mm, Number of individual labels: 10

ZB 6,LGS:FORTL.ZAHLEN - Zack marker strip

1051016

<https://www.phoenixcontact.com/us/products/1051016>



Zack marker strip, Strip, white, labeled, can be labeled with: CMS-P1-PLOTTER, printed horizontally: consecutive numbers 1 ... 10, 11 ... 20, etc. up to 491 ... 500, mounting type: snapped, for terminal block width: 6.2 mm, lettering field size: 6.15 x 10.5 mm, Number of individual labels: 10

UK 5-RETURN - Feed-through terminal block



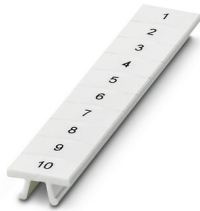
3002597

<https://www.phoenixcontact.com/us/products/3002597>

ZB 6,QR:FORTL.ZAHLEN - Zack marker strip

1051029

<https://www.phoenixcontact.com/us/products/1051029>



Zack marker strip, Strip, white, labeled, can be labeled with: CMS-P1-PLOTTER, Printed vertically: consecutive numbers 1 ... 10, 11 ... 20, etc. up to 491 ... 500, mounting type: snapped, for terminal block width: 6.2 mm, lettering field size: 6.15 x 10.5 mm, Number of individual labels: 10

ZB 6,LGS:GLEICHE ZAHLEN - Zack marker strip

1051032

<https://www.phoenixcontact.com/us/products/1051032>



Zack marker strip, Strip, white, labeled, can be labeled with: CMS-P1-PLOTTER, printed horizontally: Identical numbers 1 or 2, etc. up to 100, mounting type: snapped, for terminal block width: 6.2 mm, lettering field size: 6.15 x 10.5 mm, Number of individual labels: 10

UK 5-RETURN - Feed-through terminal block



3002597

<https://www.phoenixcontact.com/us/products/3002597>

ZB 6,LGS:L1-N,PE - Marker for terminal blocks

1051414

<https://www.phoenixcontact.com/us/products/1051414>



Marker for terminal blocks, Strip, white, labeled, can be labeled with: CMS-P1-PLOTTER, horizontal: L1, L2, L3, N, PE, L1, L2, L3, N, PE, mounting type: snapped, for terminal block width: 6.2 mm, lettering field size: 6.15 x 10.5 mm, Number of individual labels: 10

ZB 6,LGS:U-N - Marker for terminal blocks

1051430

<https://www.phoenixcontact.com/us/products/1051430>



Marker for terminal blocks, Strip, white, labeled, can be labeled with: CMS-P1-PLOTTER, printed horizontally: U, V, W, N, GND, U, V, W, N, GND, mounting type: snapped, for terminal block width: 6.2 mm, lettering field size: 6.15 x 10.5 mm, Number of individual labels: 10

UK 5-RETURN - Feed-through terminal block

3002597

<https://www.phoenixcontact.com/us/products/3002597>



UC-TM 6 - Marker for terminal blocks

0818085

<https://www.phoenixcontact.com/us/products/0818085>



Marker for terminal blocks, Sheet, white, unlabeled, can be labeled with: BLUEMARK ID COLOR, BLUEMARK ID, BLUEMARK CLED, PLOTMARK, CMS-P1-PLOTTER, mounting type: snapped, for terminal block width: 6.2 mm, lettering field size: 5.6 x 10.5 mm, Number of individual labels: 80

UC-TM 6 CUS - Marker for terminal blocks

0824589

<https://www.phoenixcontact.com/us/products/0824589>



Marker for terminal blocks, can be ordered: by sheet, white, labeled according to customer specifications, mounting type: snap into tall marker groove, for terminal block width: 6.2 mm, lettering field size: 5.6 x 10.5 mm, Number of individual labels: 80

UK 5-RETURN - Feed-through terminal block

3002597

<https://www.phoenixcontact.com/us/products/3002597>



UCT-TM 6 - Marker for terminal blocks

0828736

<https://www.phoenixcontact.com/us/products/0828736>



Marker for terminal blocks, Sheet, white, unlabeled, can be labeled with: TOPMARK NEO, TOPMARK LASER, BLUEMARK ID COLOR, BLUEMARK ID, BLUEMARK CLED, THERMOMARK PRIME, THERMOMARK CARD 2.0, THERMOMARK CARD, mounting type: snapped, for terminal block width: 6.2 mm, lettering field size: 5.6 x 10.5 mm, Number of individual labels: 60

UCT-TM 6 CUS - Marker for terminal blocks

0829602

<https://www.phoenixcontact.com/us/products/0829602>



Marker for terminal blocks, can be ordered: by sheet, white, labeled according to customer specifications, mounting type: snap into tall marker groove, for terminal block width: 6.2 mm, lettering field size: 5.6 x 10.5 mm, Number of individual labels: 60

UK 5-RETURN - Feed-through terminal block



3002597

<https://www.phoenixcontact.com/us/products/3002597>

CLIPFIX 35 - End clamp

3022218

<https://www.phoenixcontact.com/us/products/3022218>



Quick mounting end clamp for NS 35/7,5 DIN rail or NS 35/15 DIN rail, with marking option, width: 9.5 mm, color: gray

CLIPFIX 35-5 - End clamp

3022276

<https://www.phoenixcontact.com/us/products/3022276>



Quick mounting end clamp for NS 35/7,5 DIN rail or NS 35/15 DIN rail, with marking option, with parking option for FBS...5, FBS...6, KSS 5, KSS 6, width: 5.15 mm, color: gray

UK 5-RETURN - Feed-through terminal block

3002597

<https://www.phoenixcontact.com/us/products/3002597>

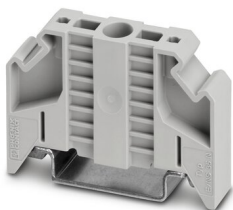


E/NS 35 N - End clamp

0800886

<https://www.phoenixcontact.com/us/products/0800886>

End clamp, width: 9.5 mm, color: gray



PSBJ 3/13/4 - Female test connector

0201304

<https://www.phoenixcontact.com/us/products/0201304>

Female test connector, number of positions: 1, color: silver



UK 5-RETURN - Feed-through terminal block

3002597

<https://www.phoenixcontact.com/us/products/3002597>



PSB 3/10/4 - Female test connector

0601292

<https://www.phoenixcontact.com/us/products/0601292>



Female test connector, number of positions: 1, color: silver

E/UK - End clamp

1201442

<https://www.phoenixcontact.com/us/products/1201442>



End clamp, material: PA, color: gray, Mounting on a DIN rail NS 32 or NS 35

UK 5-RETURN - Feed-through terminal block

3002597

<https://www.phoenixcontact.com/us/products/3002597>



E/UK 1 - End clamp

1201413

<https://www.phoenixcontact.com/us/products/1201413>



End clamps, for supporting the ends of double-level and three-level terminal blocks, width: 10 mm, color: gray

Phoenix Contact 2023 © - all rights reserved

<https://www.phoenixcontact.com>

Phoenix Contact USA
586 Fulling Mill Road
Middletown, PA 17057, United States
(+717) 944-1300
info@phoenixcon.com