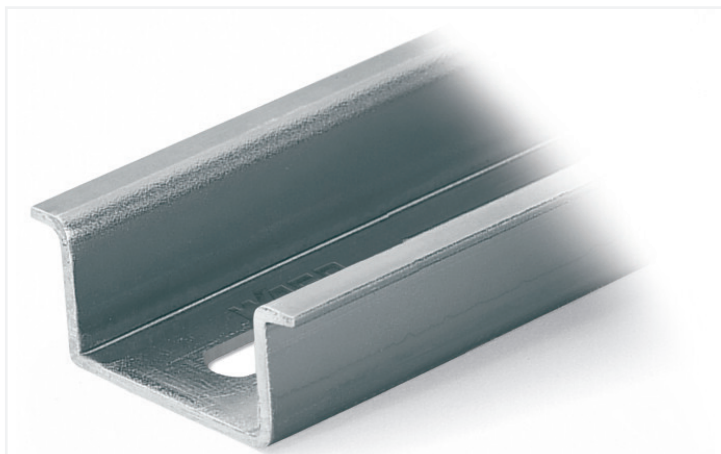


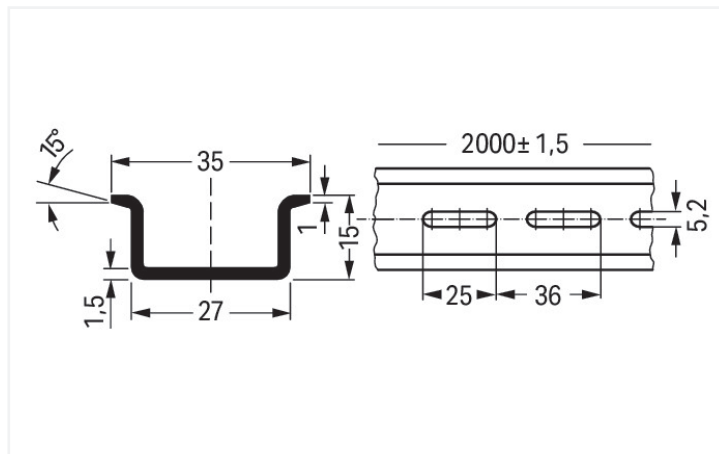
Data Sheet | Item Number: 210-197

Steel carrier rail; 35 x 15 mm; 1.5 mm thick; 2 m long; slotted; similar to EN 60715; silver-colored

<https://www.wago.com/210-197>



Color: ■ silver-colored



Dimensions in mm

Technical data

Main product function

Mounting accessories

Physical data

Width	2000 mm / 78.74 inches
Height	15 mm / 0.591 inches
Depth	35 mm / 1.378 inches

Material data

Color	silver-colored
Fire load	0 MJ
Weight	1235 g

Commercial data

Product Group	2 (Terminal Block Accessories)
eCl@ss 10.0	27-40-06-02
eCl@ss 9.0	27-40-06-02
ETIM 8.0	EC001285
ETIM 7.0	EC001285
PU (SPU)	10 (1) pcs
Packaging type	Box
Country of origin	IT
GTIN	4017332102759
Customs tariff number	72169180000

Environmental Product Compliance

RoHS Compliance Status Compliant, No Exemption

Downloads

Environmental Product Compliance

Compliance Search
 Environmental Product Compliance 210-197

Documentation

Bid Text			
210-197	19.02.2019	xml 2.71 KB	
210-197	31.08.2017	doc 23.50 KB	

CAD/CAE-Data

CAD data
 2D/3D Models 210-197

CAE data
 EPLAN Data Portal 210-197
 WSCAD Universe 210-197
 ZUKEN Portal 210-197

1 Compatible Products

1.1 Optional Accessories

1.1.1 Installation

1.1.1.1 Mounting accessories

 Item No.: 210-148 Angled support bracket; without screw; silver-colored	 Item No.: 209-137 Mounting adapter; can be used as end stop; 6.5 mm wide; gray	 Item No.: 210-149 Screw M 5 x 8; for angled support bracket	 Item No.: 249-117 Screwless end stop; 10 mm wide; for DIN-rail 35 x 15 and 35 x 7.5; gray
 Item No.: 249-197 Screwless end stop; 14 mm wide; for DIN-rail 35 x 15 and 35 x 7.5; gray	 Item No.: 249-116 Screwless end stop; 6 mm wide; for DIN-rail 35 x 15 and 35 x 7.5; gray		

1.1.2 Marking

1.1.2.1 Label



[Item No.: 210-808](#)

Labels; for Smart Printer; 9.5 x 25 mm;
white



[Item No.: 210-708](#)

Labels; for TP printers; 9.5 x 25 mm; white