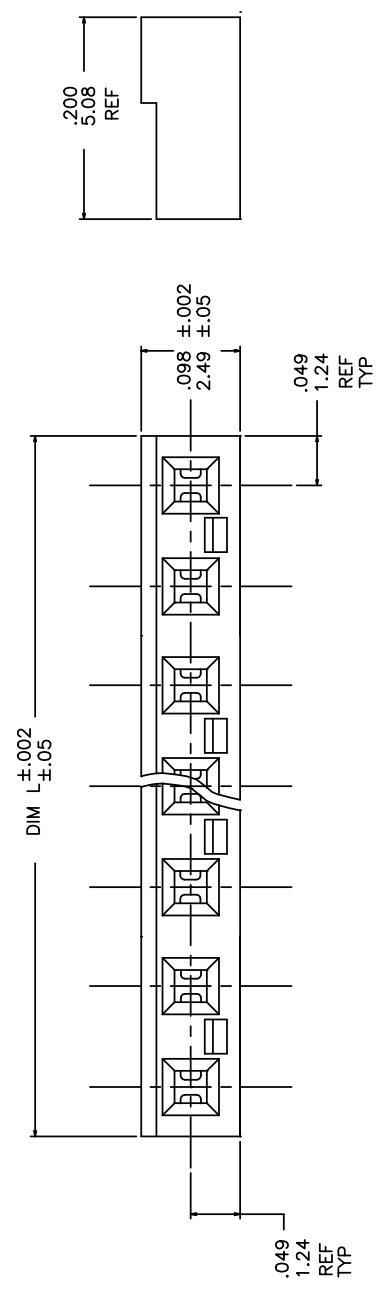
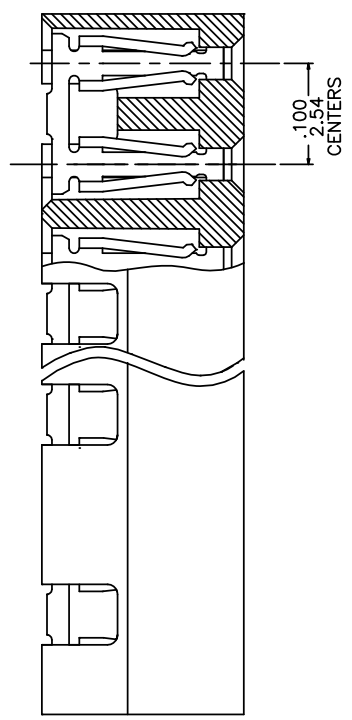


PRODUCT NO.
SEE TABLE

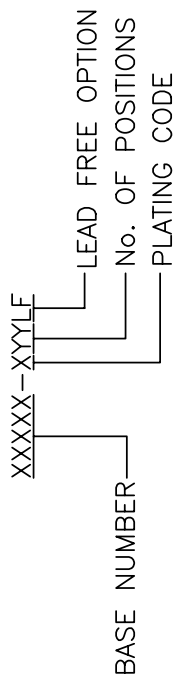


| mat'l. code | | surface | tolerance | projection | product family |
|-------------|-------------|-----------|------------|---------------------------------------|--|
| ltr | ec'n | ngbr | date | ISO 1302 | JUMPER |
| A | RELEASE | JGS | 4/1/91 | ISO 1101 | S. R. MULTI POSITION LOW PROFILE JUMPER ASS'Y |
| B | V11440 | MRC | 7/19/91 | tolerances unless otherwise specified | |
| C | V80322 | SAR | 5/21/98 | angle | dwg no |
| D | M05-0205 | ERE | 09/29/05 | linear | sheet of 2 size |
| E | M06-0238 | MIN | 06/17/06 | xxxx±.005/.13 | 69146 |
| F | M06-0389 | AGS | 10/4/08 | xxxx±.0020/.05 | Product Customer Drawing |
| G | lax-4-01707 | JZ | 2012-05-04 | scale 1:1 | |
| sheet | | revisidng | G | J. SHREINER | |
| index | | sheet | 1 2 | M.HAHN | |
| | | | | M.HAHN | |
| | | | | M.HAHN | |



1 | 2 | 3 | 4 | 5 |

| PRODUCT NO. | NO. OF POS. | DIM L | LEAD FREE OPTION |
|-------------|-------------|-------------|------------------|
| 69146-X04 | 1 X 4 | .398/10.11 | NOTE 3,4 |
| -X06 | 1 X 6 | .598/15.19 | |
| -X08 | 1 X 8 | .798/20.27 | |
| -X10 | 1 X 10 | .998/25.35 | |
| -X12 | 1 X 12 | 1.198/30.43 | |
| -X14 | 1 X 14 | 1.398/35.51 | |
| -X16 | 1 X 16 | 1.598/40.59 | |
| -X18 | 1 X 18 | 1.798/45.67 | |
| 69146-X20 | 1 X 20 | 1.998/50.75 | NOTE 3,4 |



NOTES:

- MATERIAL: POLYESTER, FLAME RETARDANT PER UL-94-VO. COLOR - BLACK
- RECOMMENDED APPLICATION DATA:
 - ALL MATING PINS TO BE .025/.64 SQ.ON TRUE CENTER OF GIVEN TERMINAL SPACING WITHIN .015/.38 DIA.
 - SUGGESTED MATING PIN LENGTH .160/4.06 MIN.
- ADD "LF" SUFFIX AT THE END OF PART NUMBER FOR LEAD FREE OPTION.
- THESE PRODUCTS MEET EUROPEAN UNION DIRECTIVES AND OTHER COUNTRY REGULATIONS AS DESCRIBED IN GS-22-008.
- THE PRODUCT IS NOT INTENDED TO BE EXPOSED TO A MANUFACTURING SOLDER PROCESS.
- "THIS PRODUCT HAS 100% TIN PLATING IN THE INTERFACE AND HAS NOT BEEN TESTED FOR WHISKERS GROWTH IN ALL INTERCONNECT ENVIRONMENTS."
- PRODUCT SPECIFICATION: BUS-12-071.

CONTACT PLATING:

- 1XX 15μ"/0.38μ Au OR GXT OVER 50μ"/1.27μ Ni
- 2XX 30μ"/0.76μ Au OR GXT OVER 50μ"/1.27μ Ni
- 3XXLF 100μ"/2.54μ Sn OVER 50μ"/1.27μ Ni (NOTE 6)
- 4XX-~~At FLASH-OVER-50μ"/1.27- Ni in CONTACT AREA--~~ OBSOLETE

| | | | | |
|----------------|---------|---------------------------------------|------------|----------------|
| mat'l. code | surface | tolerance | projection | product family |
| ISD 1302 | ISO 406 | ISO 1101 | | JUMPER |
| tr ecn nōdr | date | tolerances unless otherwise specified | title | |
| G | | angles line o r .xxx±.01/.3 | INCH/MM | |
| | | 0±2' | scale 1:1 | |
| | | dr J. SHREINER 4/1/91 | | |
| | | engr M.HAHN 4/1/91 | | |
| | | chr M.HAHN 4/1/91 | | |
| | | appd M.HAHN 4/1/91 | | |
| sheet revision | | | | |
| index sheet | | | | |

S. R. MULTI POSITION
LOW PROFILE JUMPER
dwg no 69146
type Product Customer

