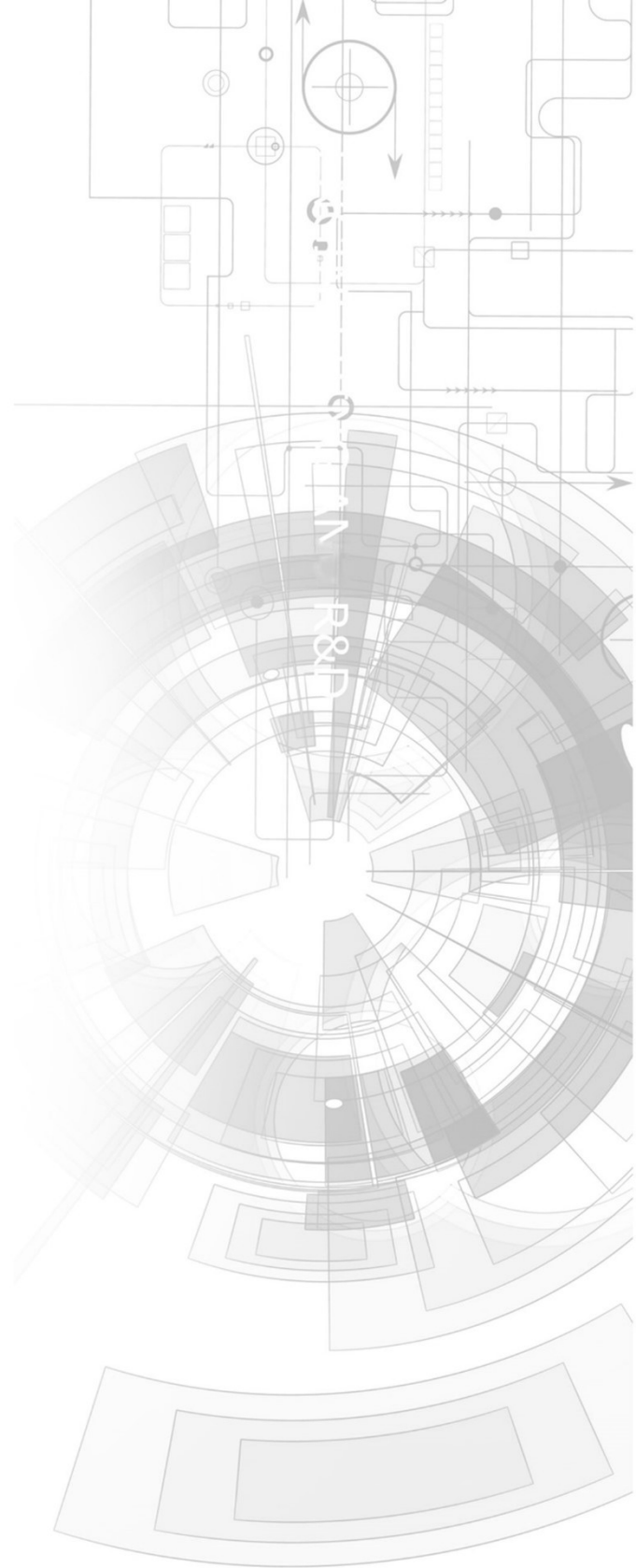


# gen4-BEZEL

gen4-BEZEL-24B / gen4-BEZEL-24W  
gen4-BEZEL-28B / gen4-BEZEL-28W  
gen4-BEZEL-32B / gen4-BEZEL-32W  
gen4-BEZEL-35B / gen4-BEZEL-35W  
gen4-BEZEL-43B / gen4-BEZEL-43W  
gen4-BEZEL-50B / gen4-BEZEL-50W  
gen4-BEZEL-70B / gen4-BEZEL-70W



## Datasheet

Revision 1.4

Copyright © 2023 4D Systems

Content may change at any time. Please refer to the resource centre for latest documentation.

# Contents

---

1. Description	3
2. Features	4
3. Assembly of the gen4 Display Module onto the Bezel and the Panel	5
4. Mechanical Dimensions	6

## 1. Description

These bezels are plastic surrounds for all gen4 display modules which feature Resistive Touch.

These bezels provide a sleek cover to the gen4 display modules and provide an easy method to panel-mount the display modules into an enclosure. The bezel mounts the display module, while also providing a mounting solution into a panel, keeping it all securely together.

Spring clips attach to the bezel in multiple locations, and hold it tightly to the enclosure/wall panel, offering a range of panel thickness from 1mm to 3.0mm without the need to add washers. If a panel thicker than 3.0mm is required, washers with longer screws could be placed between the spring clip and the bezel, however, this is not recommended practice.

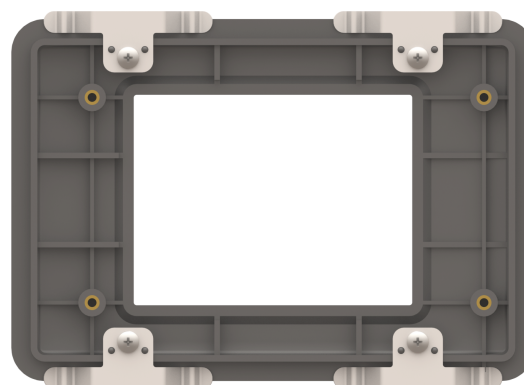
### Note

This bezel is designed for indoor use only. It is not weather-tight, nor does it offer any IP rating. It should only be used indoors in clean environments as it offers little protection to the circuitry of moisture or articles.

Bezels are available in Black only as standard, however, can be ordered in White on special request, subject to MOQs. Please contact Sales.



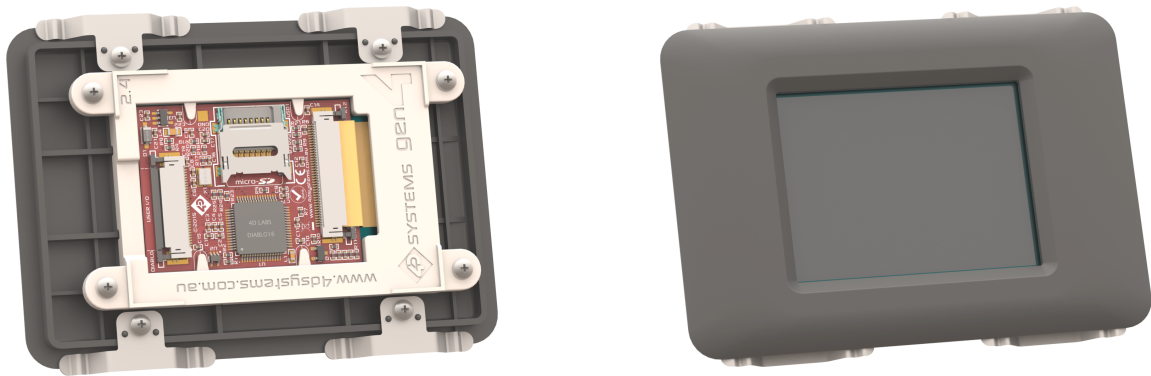
*Bare 2.4" Bezel with clips attached - Front*



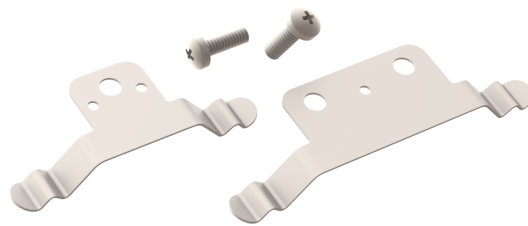
*Bare 2.4" Bezel with clips attached - Back*

## 2. Features

- Plastic Bezel designed for panel mounting the gen4 range of resistive touch Display Modules
- A simple cut-out is required, and no mounting holes require to be drilled into the panel
- Brass mounting inserts in the rear of the bezel, provide secure fixing points using the included screws
- 4 to 6 Spring Clips for attaching the bezel to the panel (Quantity and clip size depending on the size of the Bezel)
- 8 to 16 M2 mounting screws included (Quantity depending on the size of the Bezel), for attaching the gen4 display to the bezel, and attaching the spring clips to the bezel.



*gen4-uLCD-24DT Mounted in 2.4" Bezel - Back    gen4-uLCD-24DT Mounted in 2.4" Bezel - Front*



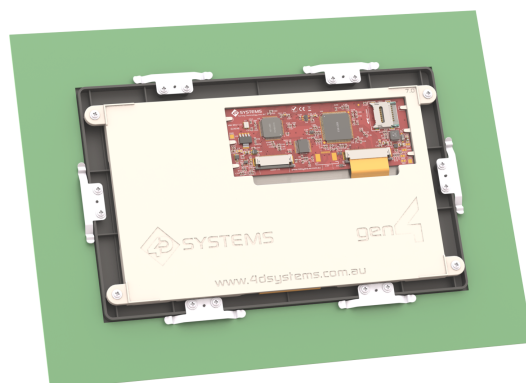
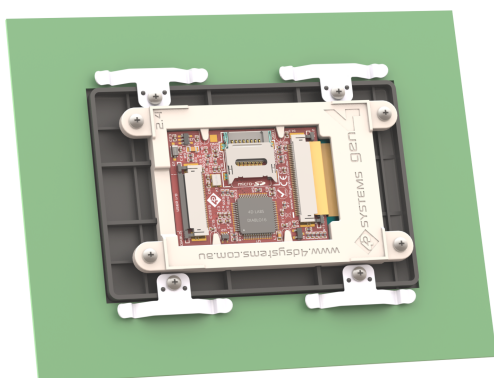
*Small and Large Spring Clips + Screws*

### 3. Assembly of the gen4 Display Module onto the Bezel and the Panel

1. Place the gen4 display module face down into the bezel, taking care of the orientation of the display so the active area of the display is visible through the viewing hole on the front of the bezel. It will be obvious as to the correct orientation, as part of the display will be obstructed if it is backward.
2. Insert 4 of the screws into the mounting tabs of the gen4 display module, to secure the display module on the bezel. Nip the screws up but take care, not to over-tighten or damage may be done to the bezel.
3. Place the assembled bezel into the Panel/Enclosure which you have already cut the required hole out to suit, taking note of the orientation of the display based on how you have programmed your display module. Orientation of the graphic output can be changed from inside the Workshop4 IDE also.
4. Place one of the mounting screws through a hole in the spring clip, and line it up with the mounting pegs on the bezel and the screw hole. Screw the mounting clip down onto the bezel, allowing the spring clip to work against the panel, holding the bezel firmly in place. Be sure not to over-tighten.
5. Repeat for the remaining screws.
6. The bezel should now be securely fitted to the panel, and the gen4 Display Module should be securely fitted to the bezel.

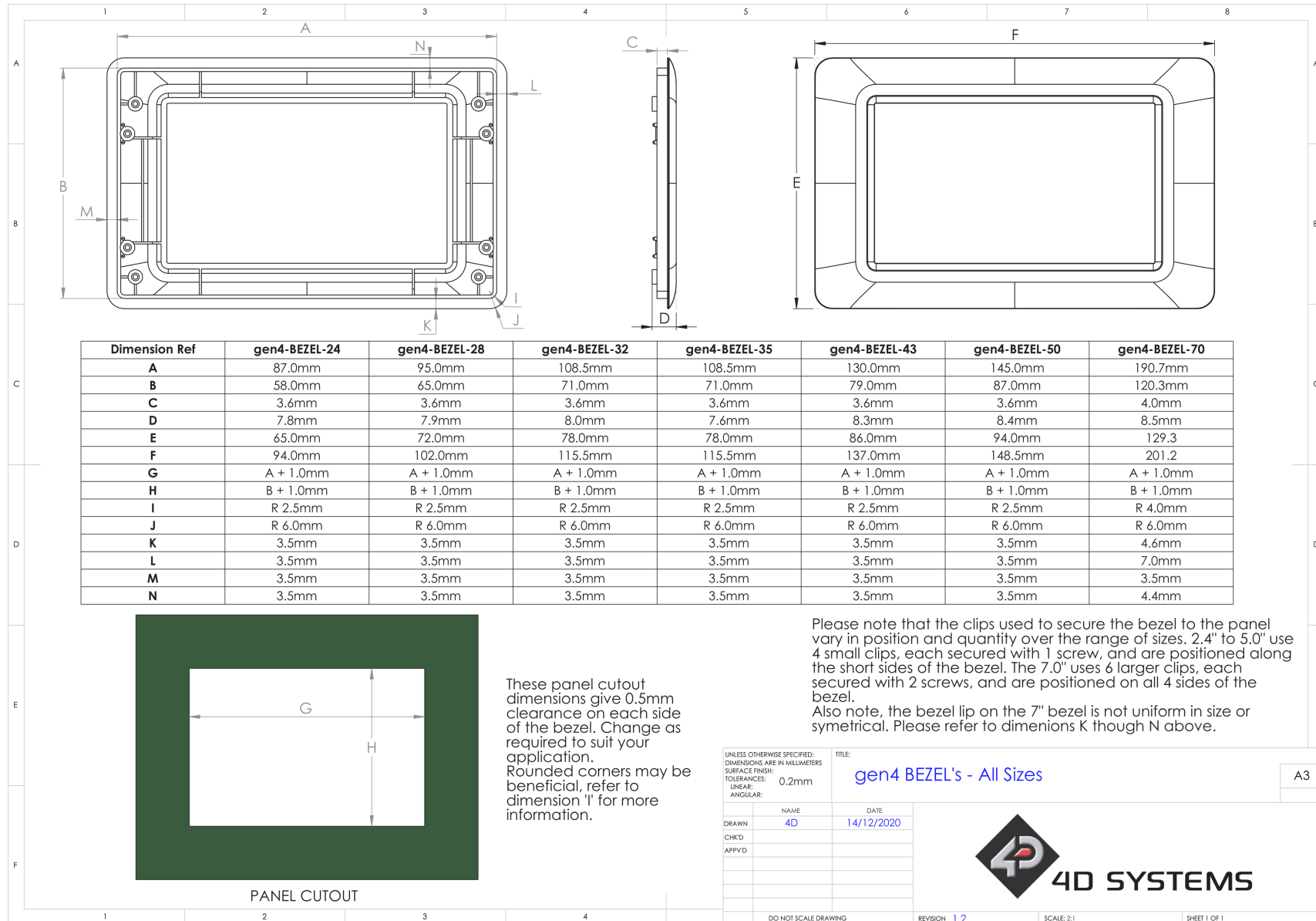
#### Note

It is possible to change the order of mounting, mount the bezel into the panel first, and mount the display module second. This is not a problem.



*Gen4-uLCD-24DT secured to the 2.4" Bezel, and Gen4-uLCD-70DT secured to the 7.0" Bezel, and Bezel secured to the Panel/Enclosure using the supplied small spring clips and screws*      *Bezel secured to the Panel/Enclosure using the supplied large spring clips and screws*

# 4. Mechanical Dimensions



**ORDERING INFORMATION**

Gen4-BEZEL-24B (Black Version)

Gen4-BEZEL-24W (White Version) - Special Order only - Subject to MOQ - Please contact Sales

Gen4-BEZEL-28B (Black Version)

Gen4-BEZEL-28W (White Version) - Special Order only - Subject to MOQ - Please contact Sales

Gen4-BEZEL-32B (Black Version)

Gen4-BEZEL-32W (White Version) - Special Order only - Subject to MOQ - Please contact Sales

Gen4-BEZEL-35B (Black Version)

Gen4-BEZEL-35W (White Version) - Special Order only - Subject to MOQ - Please contact Sales

Gen4-BEZEL-43B (Black Version)

Gen4-BEZEL-43W (White Version) - Special Order only - Subject to MOQ - Please contact Sales

Gen4-BEZEL-50B (Black Version)

Gen4-BEZEL-50W (White Version) - Special Order only - Subject to MOQ - Please contact Sales

Gen4-BEZEL-70B (Black Version)

Gen4-BEZEL-70W (White Version) - Special Order only - Subject to MOQ - Please contact Sales

**Packaging:** Module sealed in antistatic foam padded 4D Systems Box