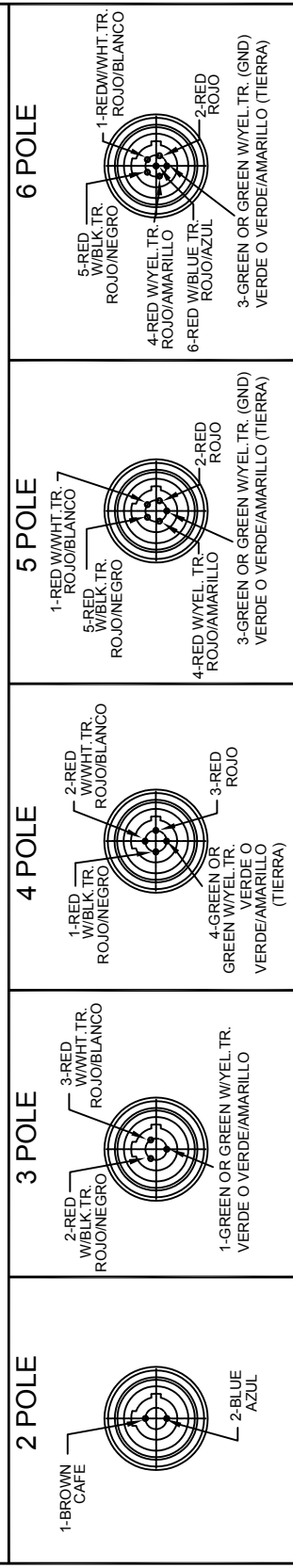


CONNECTOR SPECIFICATION:

VOLTAGE RATING	250 VAC/VDC
AMPERAGE RATING	max. 4 AMPS
PROTECTION	IP67
OPERATING TEMPERATURE	-20°C TO 105°C
UL CERTIFICATIONS	UL LISTED, FILE NO. E152210
CSA CERTIFICATIONS	CSA CERTIFIED FILE NO. LR6837

ITEM	COMPONENT	MATERIAL	FINISH
7	LABLE	MYLAR	BLACK/YELLOW
6	O-RING	NITRILE	RED
5	COUPLING NUT	ZINC DIE CAST/ BRASS	BLACK E-COATED/ NICKEL PLATED
4	CONTACT SOCKET	COPPER ALLOY	GOLD OVER NICKEL
3	INSERT	NYLON	BLACK
2	OVERMOLD	PVC	YELLOW
1	CABLE - 22 AWG (26x#36 COPPER STRANDING) 2-6 CONDUCTORS BRAID SHIELD 300V	PVC	YELLOW

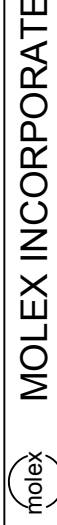
**FRONT VIEW - FEMALE INSERT WIRING COLOR CODE
VISTA FRONTAL - INSERTO HEMBRA**



QUALITY SYMBOLS	GENERAL TOLERANCES (UNLESS SPECIFIED)	DESIGN STYLE	SCALE	DESIGN UNITS	THIRD ANGLE PROJECTION
$\blacktriangle = 0$	4 PLACES \pm --- INCH	DRAWN BY DATE	1:1	METRIC	
$\triangle C = 0$	3 PLACES \pm ---	LSTEMMLE 2010/02/05			
	2 PLACES \pm ---	CHECKED BY DATE			
	1 PLACE ± 0.3	FP 2010/03/09			
	ANGULAR \pm --- °	APPROVED BY DATE			
	DRAFT WHERE APPLICABLE MUST REMAIN WITHIN DIMENSIONS	FPACHER 2010/03/09			
		MATERIAL NO.			
		SEE TABLE SHEET 2			
		SD-120072-010			
		DOCUMENT NO.			
		MOLEX INCORPORATED			
		SD-120072-010			
		SHEET NO.			
		1 OF 2			
		THIS DRAWING CONTAINS INFORMATION THAT IS PROPRIETARY TO MOLEX INCORPORATED AND SHOULD NOT BE USED WITHOUT WRITTEN PERMISSION			

DESCRIPTION	REV
DESCRIPTION	2
FC NO: WEU2010-0417	
DRWN: LSTEMMLE	
CHK'D: NS	
APPR: FPACHER	
2010/03/10	

**MICRO-CHANGE CORDSET
2-6P DUAL KEYWAY FE 90
BRAID SHIELD PVC CABLE**



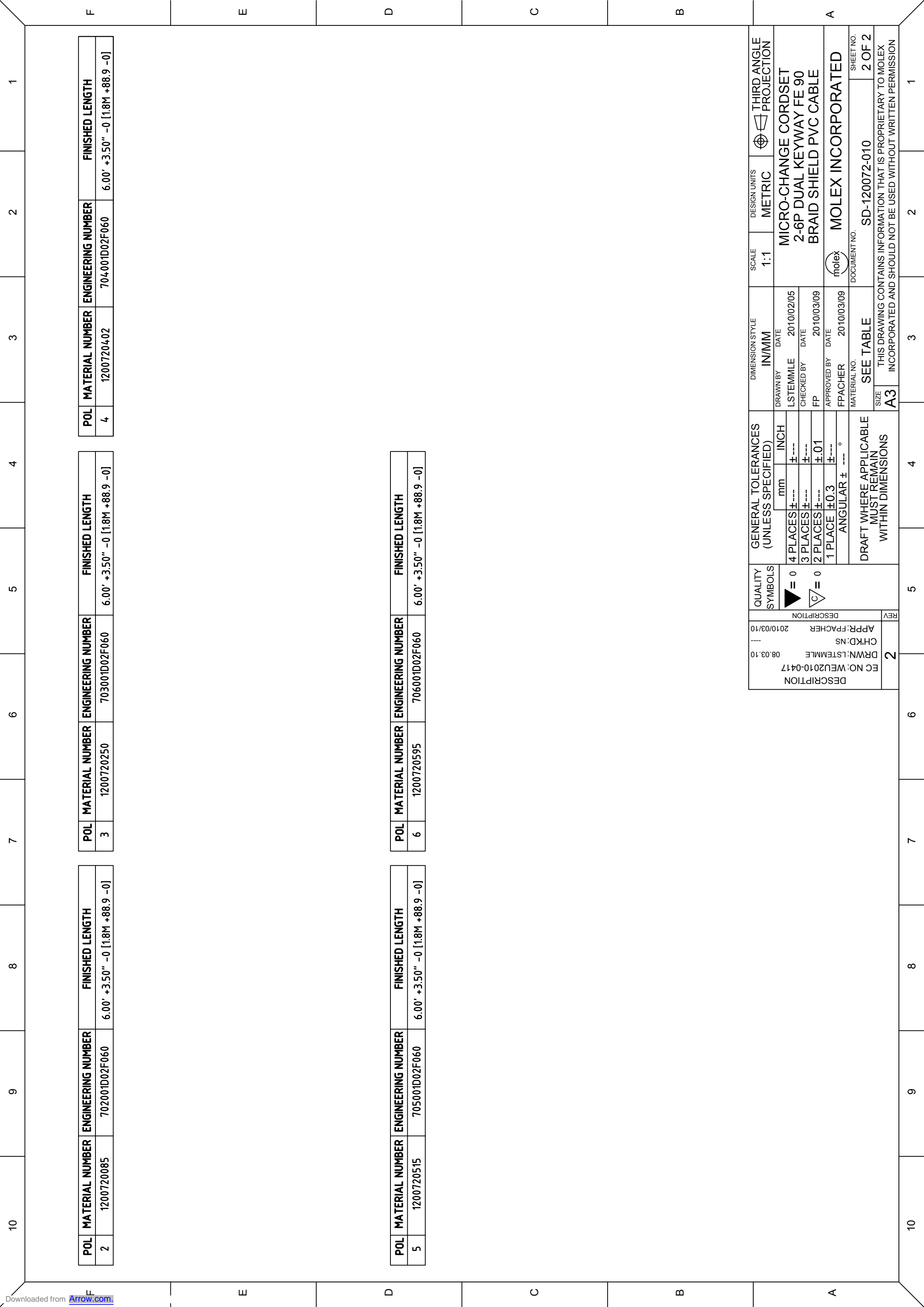
MOLEX INCORPORATED

SD-120072-010
SHEET NO. 1 OF 2

THIS DRAWING CONTAINS INFORMATION THAT IS PROPRIETARY TO MOLEX INCORPORATED AND SHOULD NOT BE USED WITHOUT WRITTEN PERMISSION

SIZE A3
DRAFT WHERE APPLICABLE MUST REMAIN WITHIN DIMENSIONS

REV	DESCRIPTION	5	4	3	2	1
2	DESCRIPTION					



POL	MATERIAL NUMBER	ENGINEERING NUMBER	FINISHED LENGTH
2	1200720085	702001D02F060	6.00' +3.50" -0 [1.8M +88.9 -0]

POL	MATERIAL NUMBER	ENGINEERING NUMBER	FINISHED LENGTH
3	1200720250	703001D02F060	6.00' +3.50" -0 [1.8M +88.9 -0]

POL	MATERIAL NUMBER	ENGINEERING NUMBER	FINISHED LENGTH
4	1200720402	704001D02F060	6.00' +3.50" -0 [1.8M +88.9 -0]

POL	MATERIAL NUMBER	ENGINEERING NUMBER	FINISHED LENGTH
5	1200720515	705001D02F060	6.00' +3.50" -0 [1.8M +88.9 -0]

POL	MATERIAL NUMBER	ENGINEERING NUMBER	FINISHED LENGTH
6	1200720595	706001D02F060	6.00' +3.50" -0 [1.8M +88.9 -0]

POL	MATERIAL NUMBER	ENGINEERING NUMBER	FINISHED LENGTH
6	1200720595	706001D02F060	6.00' +3.50" -0 [1.8M +88.9 -0]

DESCRIPTION	FC NO: WEU2010-0417
DRWN: LSTEMMLE	08.03.10
CHKD: NS	
APP: FPACHER	2010/03/10
REV	2

QUALITY SYMBOLS	

GENERAL TOLERANCES (UNLESS SPECIFIED)	
	INCH
4 PLACES ±	±.005
3 PLACES ±	±.005
2 PLACES ±	±.01
1 PLACE ±	±.03
ANGULAR ±	°

DRAWN BY		DATE	
LSTEMMLE	2010/02/05		
CHECKED BY		DATE	
FP	2010/03/09		
APPROVED BY		DATE	
FPACHER	2010/03/09		
MATERIAL NO.		SEE TABLE	
DOCUMENT NO.		SD-120072-010	
SHEET NO.		2 OF 2	

SCALE	1:1
DESIGN UNITS	METRIC
THIRD ANGLE PROJECTION	
MICRO-CHANGE CORDSET	
2-6P DUAL KEYWAY FE 90	
BRAID SHIELD PVC CABLE	
MOLEX INCORPORATED	

DRAFT WHERE APPLICABLE MUST REMAIN WITHIN DIMENSIONS	
SIZE	A3
THIS DRAWING CONTAINS INFORMATION THAT IS PROPRIETARY TO MOLEX INCORPORATED AND SHOULD NOT BE USED WITHOUT WRITTEN PERMISSION	