

Figure 1

1. INTRODUCTION

AMP* Seating Tool 122562-1 and Support Anvil 122561-1 are used to seat upper ground return shields onto the Z-PACK 2mm HM Interconnection System and Z-PACK 2mm HM right angle receptacles with integral upper ground return shields onto pc boards. The shields (and integral shields) contain ACTION PIN contacts to allow solderless pc board installation. See Figure 1.

NOTE All dimensions on this document are in metric units [with U.S. customary units in brackets].

Read these instructions and understand them before using the seating tool and support anvil.

Reasons for reissue of this instruction sheet are provided in Section 8, REVISION SUMMARY.

2. DESCRIPTION

The seating tool and support anvil are each a one-piece design. During seating, the seating tool covers the shield and presses on the top surface of the shield when the applicator ram applies force to the seating tool. The support anvil is positioned into a pc board support fixture to support the pc board.

3. REQUIREMENTS

3.1. PC Board Support Fixture

A pc board support must be used to provide proper support for the pc board and alignment of the tool to the receptacle pins, and to protect the pc board and shield contacts from damage. AMP PC Board Support Fixture 679980-[] is available and recommended for use with this seating tool and support anvil. For proper selection and detailed information, refer to instruction sheet 408-4038.

NOTE

As an alternative, you can design a pc board support fixture for your specific needs, using the recommendations in 408-6927.

3.2. Application Tooling

Power for seating must be provided by a machine capable of supplying a downward force of 89 Newtons (N) [20 lb] per contact. You may use AMP 10/20-Ton "H" Frame Assembly 803880-6 (Customer Manual 409-5567 provides instructions) or SM-3 Frame Assembly 814700-2 (409-5626).

4. SEATING

1. Set seating height to the dimension shown in Figure 2 (applicator *shut height* will equal the seating height PLUS the combined thicknesses of the pc board, support anvil, and pc board support).
2. Position support anvil, grooved side up, into the pc board support fixture and center it under the

applicator ram of the power source. Position pc board with receptacle over support anvil.

3. Position shield or receptacle (with integral shield) onto the pc board so that the contacts are properly aligned to the pc board and the support anvil. See Figure 2.

4. Insert the contacts into the pc board until the ACTION PIN section of the contacts are resting securely on, but have not fully entered, the pc board.

5. Position the seating tool onto the shield.

6. Center seating tool and shield under the applicator ram of the power source; slowly lower ram until it just meets the seating tool. Verify the alignment of the board support, pc board, shield, seating tool, and support anvil.

CAUTION

Damage to the pc board, seating tool, shield, or receptacle may occur if seating height is improperly set, if pc board is not properly positioned over the support anvil, or if seating tool is not properly seated on the shield before cycling the applicator ram.

7. Cycle applicator ram according to instructions for the power source. Check assembly for proper seating using the requirements in Figure 2.

8. Remove pc board with seated shield or seated receptacle (with integral shield), or reposition board and board support for seating additional shields or receptacles (with integral shield).

View After Seating

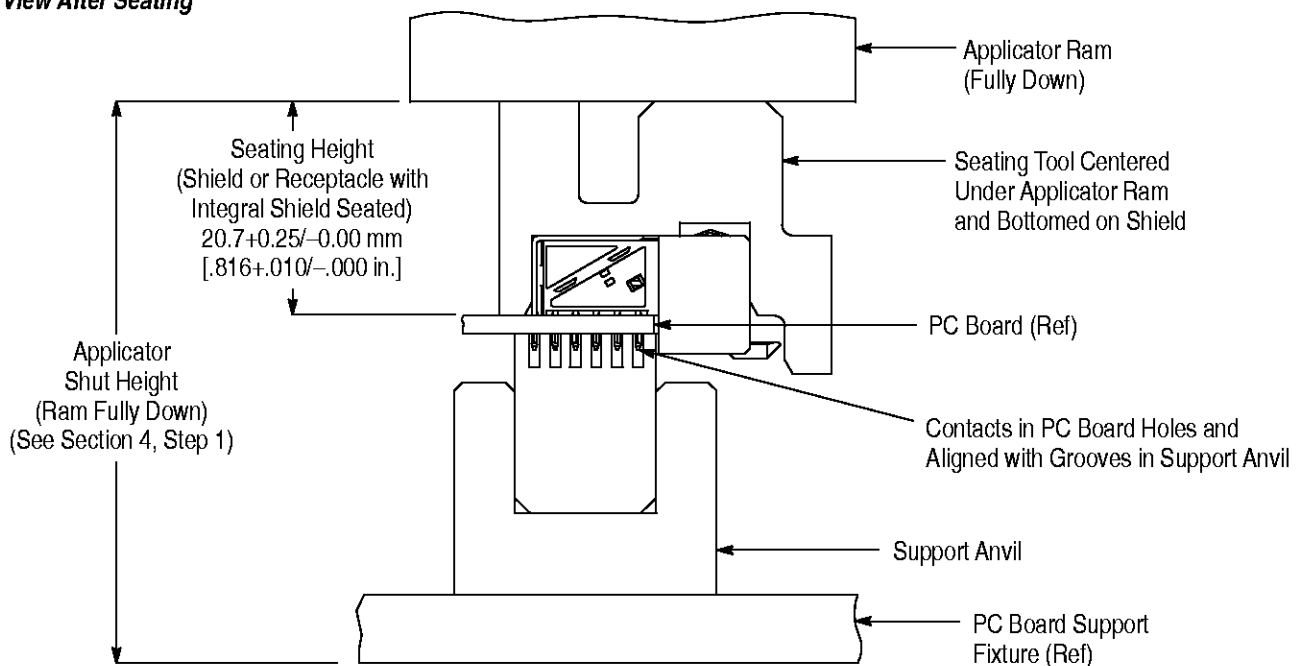


Figure 2

5. TOOL INSPECTION

The seating tool and support anvil are inspected before shipment. It is recommended that the tool and support anvil be inspected, using Figure 3, immediately upon their arrival at your facility to ensure that they have not been damaged during shipment.

Regular inspections should be performed by quality control personnel. A record of scheduled inspections should remain with the tool or be supplied to supervisory personnel responsible for the tool and support anvil. The inspection frequency should be based on the amount of use, working conditions, operator training and skill, and established company standards.

6. MAINTENANCE

It is recommended that each operator be made aware of, and responsible for, the following steps of daily maintenance.

1. Remove dust, moisture, and other contaminants with a clean, soft brush, or lint-free cloth. Do NOT use objects that could damage the tool or support anvil.
2. When the seating tool and support anvil are not in use, store them in a clean, dry area.

7. ORDERING INFORMATION AND REPAIR

Order additional seating tools and support anvils through your AMP representative, or call 1-800-526-5142, or send a facsimile of your purchase order to 717-986-7605 or write to:

CUSTOMER SERVICE (038-035)
 AMP INCORPORATED
 PO BOX 3608
 HARRISBURG PA 17105-3608

Seating tools and support anvils may be returned to AMP for evaluation and repair. For repairs, send tool and anvil, with a written description of the problem, to:

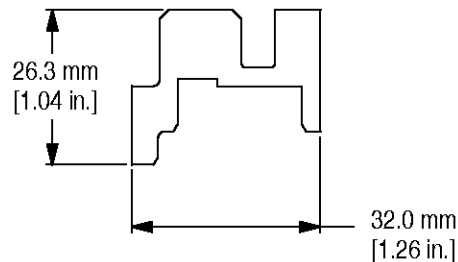
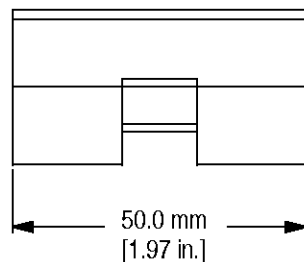
CUSTOMER REPAIR (01-12)
 AMP INCORPORATED
 1523 NORTH 4TH STREET
 HARRISBURG PA 17102-1604

8. REVISION SUMMARY

Revisions to this instruction sheet per EC 0990-0396-98 include:

- Modified Figures 1 and 3
- Added Z-PACK 2mm HM right angle receptacles with integral upper ground return shield

**Seating Tool
122562-1**



**Support Anvil
122561-1**

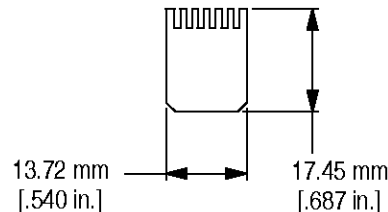
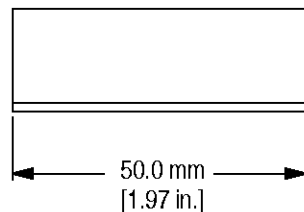


Figure 3