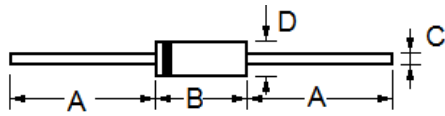


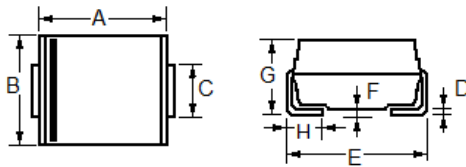


Zener Diodes 5W 1N5333A/SZ603D to 1N5388ASZ60D0, DO-15/SMB

Type No.		Nominal Zener Voltage		Maximum Zener Impedance			Maximum Reverse Leakage Current		Maximum DC Zener Current
		VZ@IZT (V)	IZT (mA)	ZZT@IZT (Ω)	ZZK@IZK (Ω)	IZK (mA)	IR @ VR (μ A) (V)		
Axial Lead	SMD								
1N5333A	SZ603D	3.3	380	3.0	400	1.0	300	1.0	1440
1N5334A	SZ603G	3.6	350	2.5	500	1.0	150	1.0	1320
1N5335A	SZ603J	3.9	320	2.0	500	1.0	50	1.0	1220
1N5336A	SZ604D	4.3	290	2.0	500	1.0	10	1.0	1100
1N5337A	SZ604H	4.7	260	2.0	450	1.0	5.0	1.0	1010
1N5338A	SZ605B	5.1	240	1.5	400	1.0	1.0	1.0	930
1N5339A	SZ605G	5.6	220	1.0	400	1.0	1.0	2.0	856
1N5340A	SZ606A	6.0	200	1.0	300	1.0	1.0	3.0	790
1N5341A	SZ606C	6.2	200	1.0	200	1.0	1.0	4.0	765
1N5342A	SZ606I	6.8	175	1.0	200	1.0	150	4.9	700
1N5343A	SZ607F	7.5	175	1.5	200	1.0	150	5.4	630
1N5344A	SZ608C	8.2	150	1.5	200	1.0	150	5.9	580
1N5345A	SZ608H	8.7	150	2.0	200	1.0	150	6.3	545
1N5346A	SZ609B	9.1	150	2.0	150	1.0	150	6.6	520
1N5347A	SZ6010	10	125	2.0	125	1.0	150	7.2	475
1N5348A	SZ6011	11	125	2.5	125	1.0	150	8.0	430
1N5349A	SZ6012	12	100	2.5	125	1.0	2.0	8.6	395
1N5350A	SZ6013	13	100	2.5	100	1.0	1.0	9.4	365
1N5351A	SZ6014	14	100	2.5	75	1.0	1.0	10.1	340
1N5352A	SZ6015	15	75	2.5	75	1.0	1.0	10.8	315
1N5353A	SZ6016	16	75	2.5	75	1.0	1.0	11.5	295
1N5354A	SZ6017	17	70	2.5	75	1.0	0.5	12.2	280
1N5355A	SZ6018	18	65	2.5	75	1.0	0.5	13.0	265
1N5356A	SZ6019	19	65	8.0	75	1.0	0.5	13.7	250
1N5357A	SZ6020	20	65	3.0	75	1.0	0.5	14.4	237
1N5358A	SZ6022	22	50	3.5	75	1.0	0.5	15.8	216
1N5359A	SZ6024	24	50	3.5	100	1.0	0.5	17.3	198
1N5360A	SZ6025	25	50	4.0	110	1.0	0.5	18.0	190
1N5361A	SZ6027	27	50	5.0	120	1.0	0.5	19.4	176
1N5362A	SZ6028	28	50	6.0	130	1.0	0.5	20.1	170
1N5363A	SZ6030	30	40	8.0	140	1.0	0.5	21.6	158
1N5364A	SZ6033	33	40	10	150	1.0	0.5	23.8	144
1N5365A	SZ6036	36	30	11	160	1.0	0.5	25.9	132
1N5366A	SZ6039	39	30	14	170	1.0	0.5	28.1	122
1N5367A	SZ6043	43	30	20	190	1.0	0.5	31.0	110
1N5368A	SZ6047	47	25	25	210	1.0	0.5	33.8	100
1N5369A	SZ6051	51	25	27	230	1.0	0.5	36.7	93.0
1N5370A	SZ6056	56	20	35	280	1.0	0.5	40.3	86.0
1N5371A	SZ6060	60	20	40	350	1.0	0.5	43.0	79.0
1N5372A	SZ6062	62	20	42	400	1.0	0.5	44.6	76.0
1N5373A	SZ6068	68	20	44	500	1.0	0.5	49.0	70.0
1N5374A	SZ6075	75	20	45	620	1.0	0.5	54.0	63.0
1N5375A	SZ6082	82	15	65	720	1.0	0.5	59.0	58.0
1N5376A	SZ6087	87	15	75	760	1.0	0.5	63.0	54.5
1N5377A	SZ6091	91	15	75	760	1.0	0.5	65.5	52.5
1N5378A	SZ60B0	100	12	90	800	1.0	0.5	72.0	47.5
1N5379A	SZ60B1	110	12	125	1000	1.0	0.5	79.2	43.0
1N5380A	SZ60B2	120	10	170	1150	1.0	0.5	86.4	39.5
1N5381A	SZ60B3	130	10	190	1250	1.0	0.5	93.2	36.6
1N5382A	SZ60B4	140	8.0	230	1500	1.0	0.5	101	34.0
1N5383A	SZ60B5	150	8.0	330	1500	1.0	0.5	108	31.6
1N5384A	SZ60B6	160	8.0	350	1650	1.0	0.5	115	29.4
1N5385A	SZ60B7	170	8.0	380	1750	1.0	0.5	122	28.0
1N5386A	SZ60B8	180	5.0	430	1750	1.0	0.5	130	26.4
1N5387A	SZ60B9	190	5.0	450	1850	1.0	0.5	137	25.0
1N5388A	SZ60D0	200	5.0	480	1850	1.0	0.5	144	23.6

Zener Diodes 5W
1N5333A/SZ603D to 1N5388ASZ60D0, DO-15/SMB

DO-15

Dim	Millimeters		Inches	
	Min	Max	Min	Max
A	25.4	---	1.000	---
B	5.80	7.60	0.230	0.300
C	0.70	0.90	0.028	0.034
D	2.60	3.60	0.104	0.140


SMB

Dim	Millimeters		Inches	
	Min	Max	Min	Max
A	4.06	4.57	0.160	0.180
B	3.30	3.94	0.130	0.155
C	1.95	2.20	0.077	0.086
D	0.125	0.305	0.006	0.012
E	5.21	5.59	0.205	0.220
F	---	0.203	---	0.008
G	2.13	2.44	0.084	0.096
H	0.76	1.52	0.030	0.060