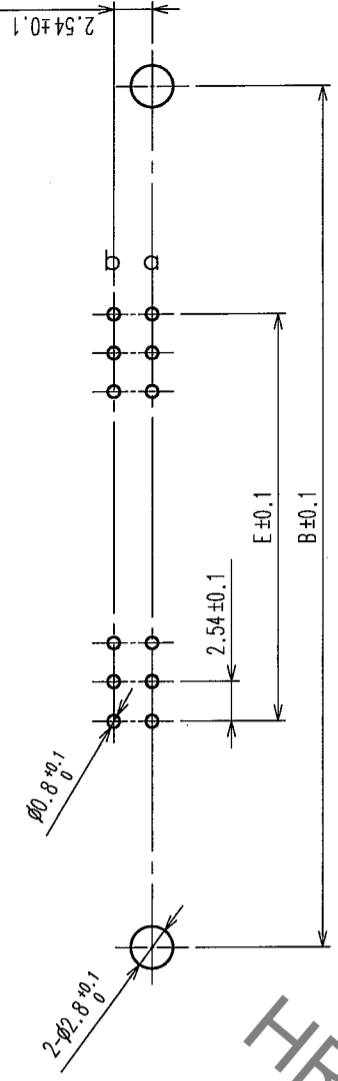
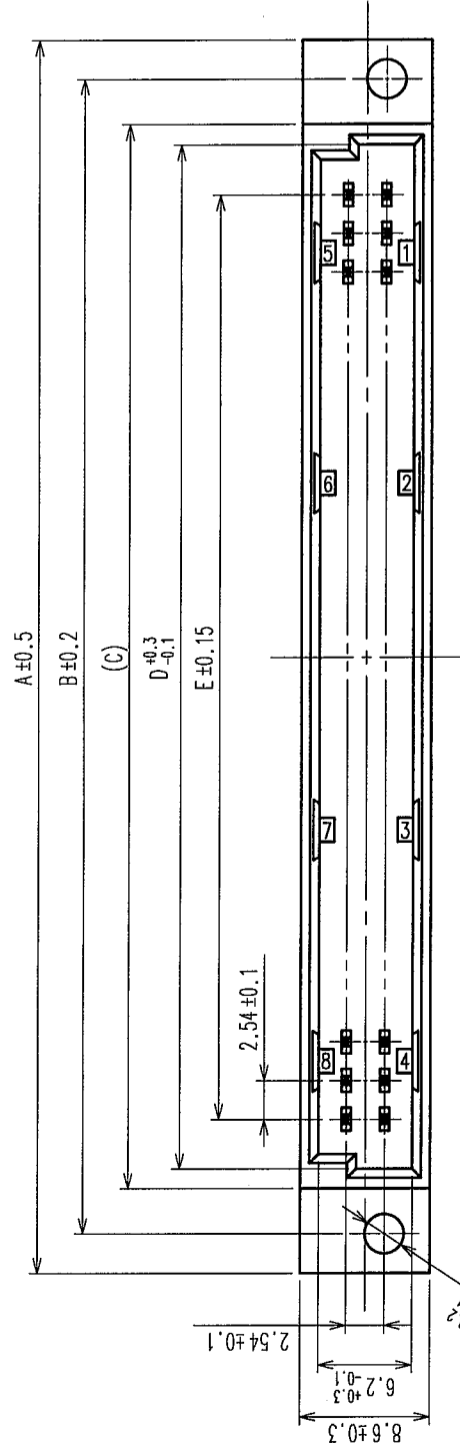


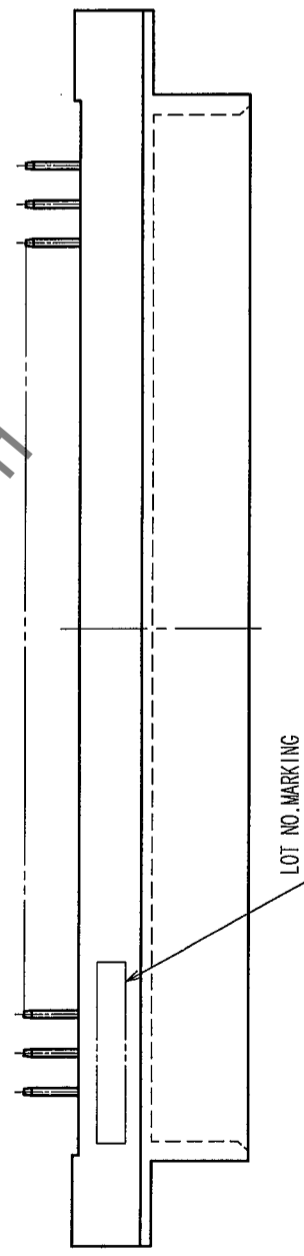
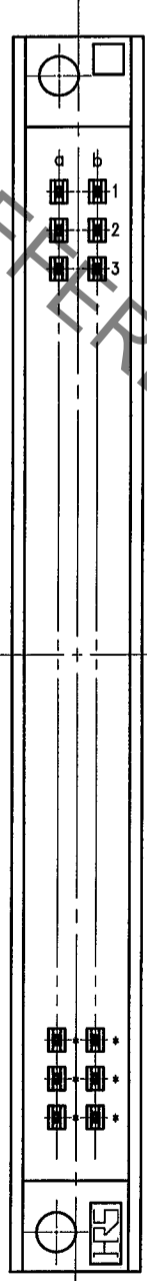
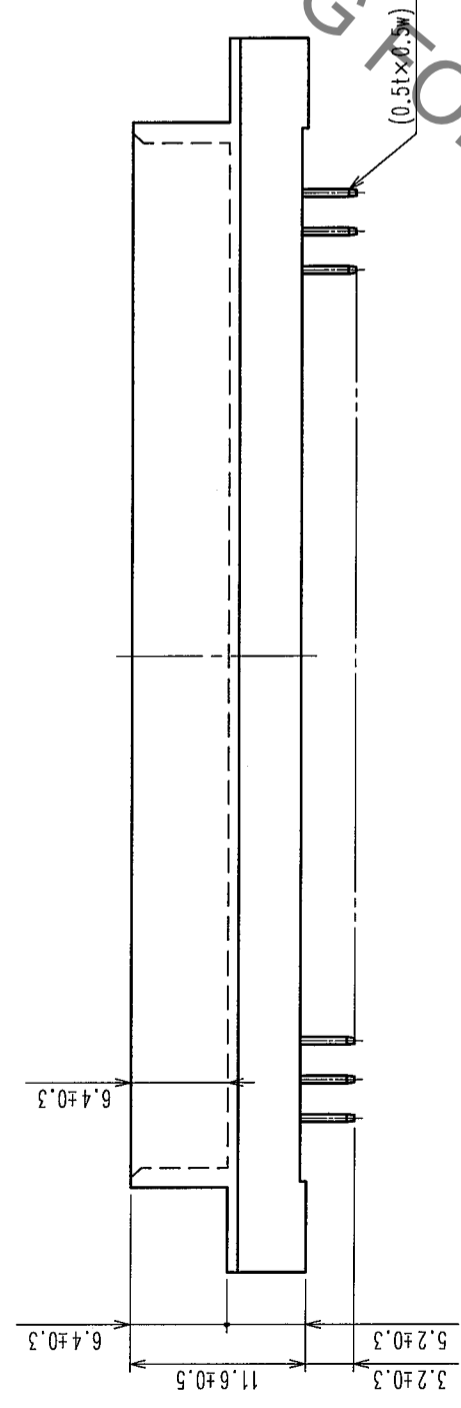
2 In case of consideration for using Automotive equipment / device which demand high reliability, kindly contact our sales window correspondents.

COUNT	DESCRIPTION OF REVISIONS	BY	CHKD	DATE	COUNT	DESCRIPTION OF REVISIONS	BY	CHKD	DATE
△					△				
△					△				
△					△				



RECOMMENDED P.C.B. HOLE PATTERN(t=1.6±0.1)

HRS DRAWING FOR REFERENCE



HRS No.	PART NO.	NUMBER OF CONTACT	A	B	C	D	E
583-0139-9-72	PCN10-20P-2.54DSA(72)	20	43.30	38.10	32.10	29.47	22.86
583-0007-8-72	PCN10-32P-2.54DSA(72)	32	58.54	53.34	47.34	44.71	38.10
583-0488-8-72	PCN10-44P-2.54DSA(72)	44	73.78	68.58	62.58	59.95	53.34
583-0008-0-72	PCN10-50P-2.54DSA(72)	50	81.40	76.20	70.20	67.57	60.96
583-0009-3-72	PCN10-64P-2.54DSA(72)	64	99.18	93.98	87.98	85.35	78.74
583-0010-2-72	PCN10-90P-2.54DSA(72)	90	132.20	127.00	121.00	118.37	111.76
583-0251-9-72	PCN10-100P-2.54DSA(72)	100	144.90	139.70	133.70	131.07	124.46

NOTE 1. AS FOR AUG, 2005.
2. THE DIMENSION IN PARENTHESIS IS FOR REFERENCE.

CODE NO. (OLD) CL		DRAWN M. OGAWA		DESIGNED H. SAITOU		CHECKED <i>S. Yamada</i>		APPROVED <i>K. Hayama</i>		FINISH, REMARKS	
		05.08.29 05.08.29		05.08.30		05.08.30		05.08.30		GRAY, UL94V-0	
		CONTACT AREA: Ni2.5μm+Au0.2μm		MOUNTING AREA: Ni2.5μm+Sn2μm							
		PART NO.		DRAWING NO.		PART NO.		DRAWING NO.			
		EDC3-154145-01		PCN10-2.54DSA(72)		EDC3-154145-01		PCN10-2.54DSA(72)			
		SCALE 2:1		UNITS mm		CODE NO.		CODE NO.			
						CL583		CL583			

TO	
----	--