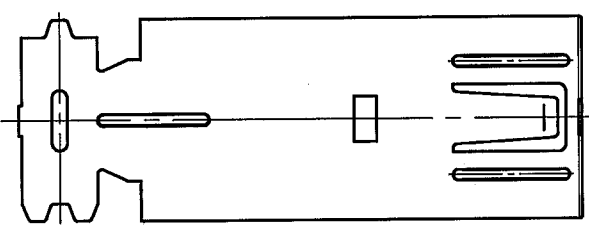
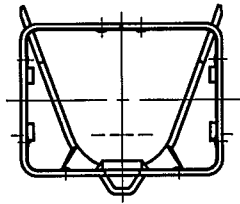
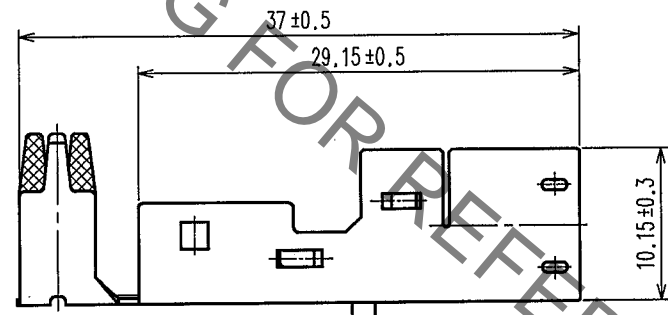
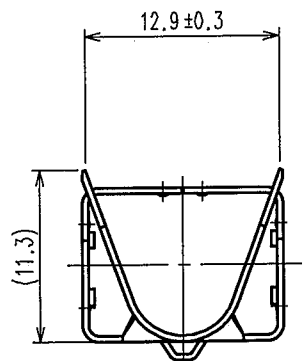
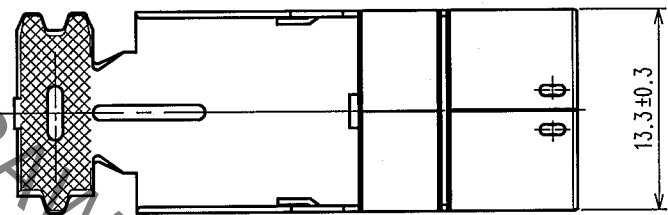
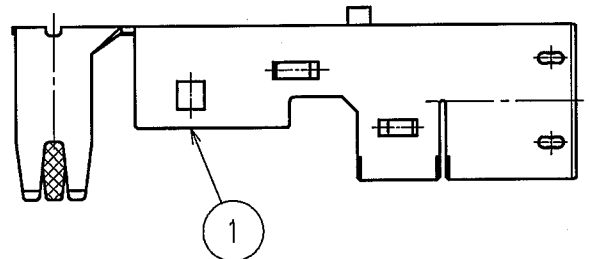


Aug.1.2022 Copyright 2022 HIROSE ELECTRIC CO., LTD. All Rights Reserved.  
In case of consideration for using Automotive equipment / device which demand high reliability, kindly contact our sales window correspondents.

1	2			3			4		
COUNT	DESCRIPTION OF REVISIONS	BY	CHKD	DATE	COUNT	DESCRIPTION OF REVISIONS	BY	CHKD	DATE
△					△				
△					△				
△					△				

RoHS, ELV COMPLIANT



NOTE1. APPLICABLE CABLE DIA: φ 7.5 TO φ 8.0

1	COPPER ALLOY	TIN PLATED T=0.4
NO.	MATERIAL	FINISH, REMARKS

CODE NO. (OLD)	DRAWN	DESIGNED	CHECKED	APPROVED	RELEASED
	N.HARUBAYASHI	N.HARUBAYASHI	<i>Nakata K. Aoto</i>		
	'05.11.25	'05.11.25	'06.7.4	'06.7.4	

 SCALE 2 : 1 UNITS mm	DRAWING NO.	PART NO.	CODE NO. CL767-0130-1	1/1 
	EDC4-166623	GT17VS-10DP-8CF		
HIROSE ELECTRIC CO., LTD.		FORM NO. 228		

TO  
AMC