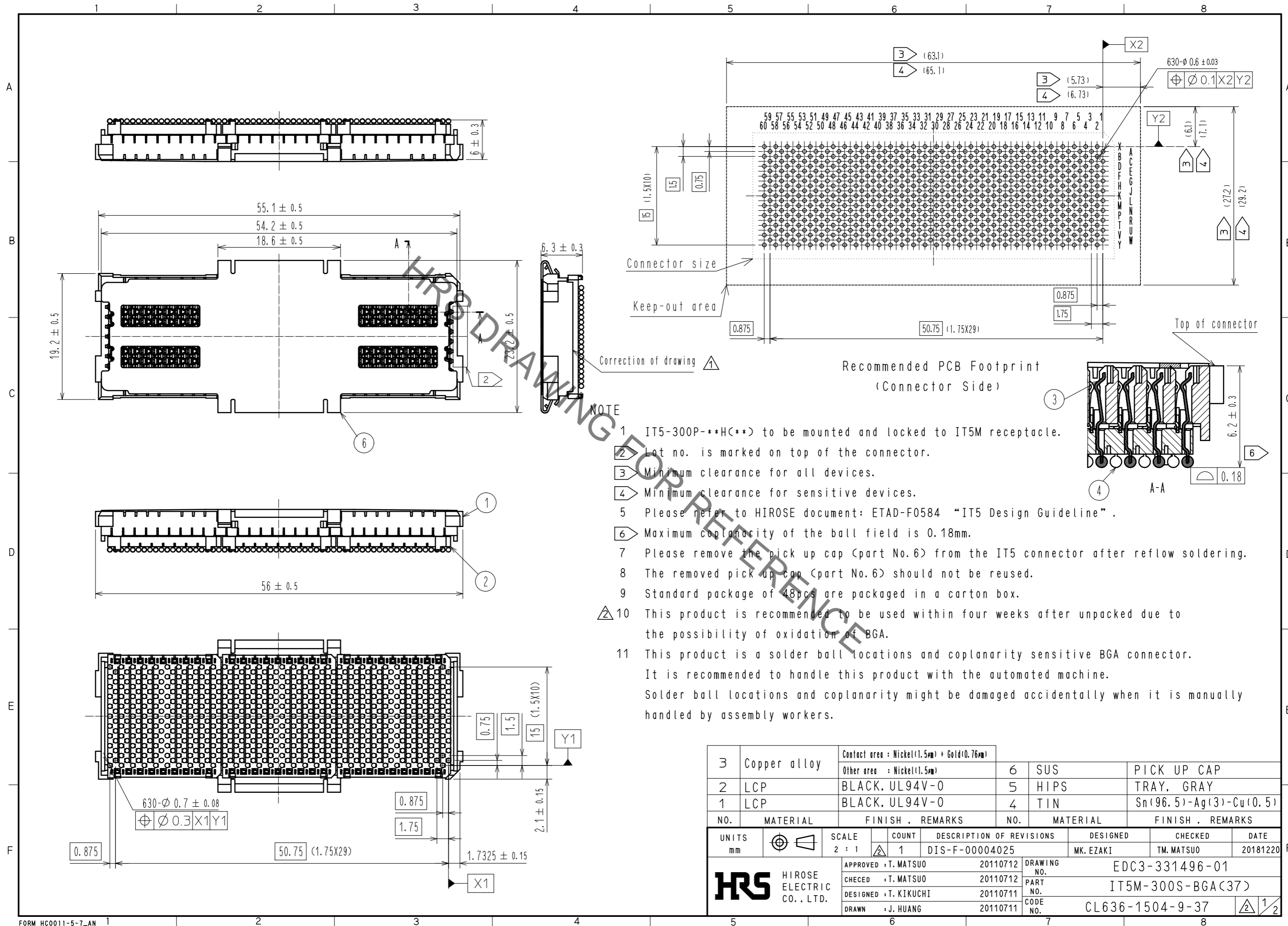


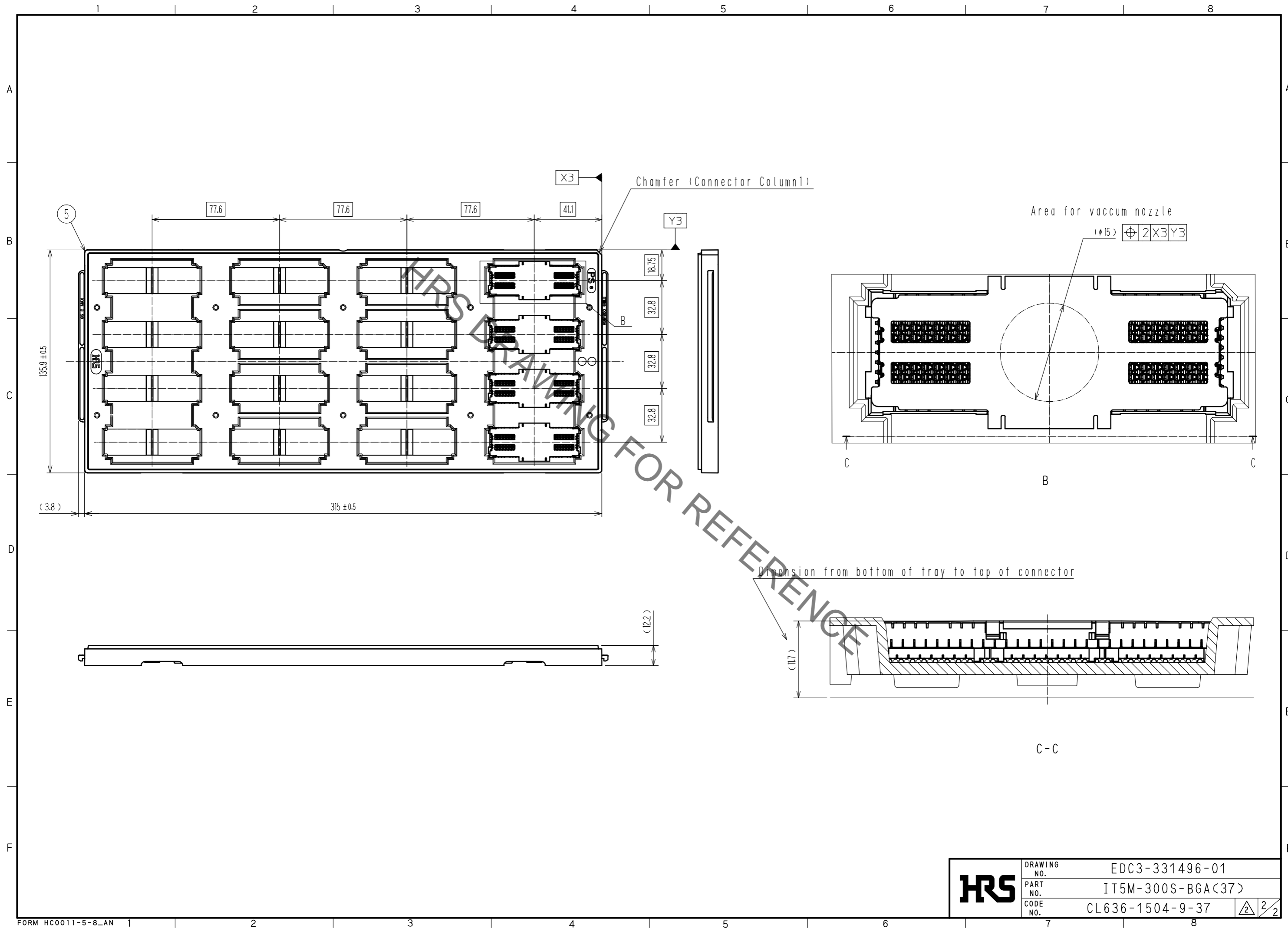
Aug.1.2022 Copyright 2022 HIROSE ELECTRIC CO., LTD. All Rights Reserved.
 In case of consideration for using Automotive equipment / device which demand high reliability, kindly contact our sales window correspondents.



- NOTE
- 1 IT5-300P-**H(**) to be mounted and locked to IT5M receptacle.
 - 2 Lot no. is marked on top of the connector.
 - 3 Minimum clearance for all devices.
 - 4 Minimum clearance for sensitive devices.
 - 5 Please refer to HIROSE document: ETAD-F0584 "IT5 Design Guideline".
 - 6 Maximum coplanarity of the ball field is 0.18mm.
 - 7 Please remove the pick up cap (part No.6) from the IT5 connector after reflow soldering.
 - 8 The removed pick up cap (part No.6) should not be reused.
 - 9 Standard package of 48pcs are packaged in a carton box.
 - 10 This product is recommended to be used within four weeks after unpacked due to the possibility of oxidation of BGA.
 - 11 This product is a solder ball locations and coplanarity sensitive BGA connector. It is recommended to handle this product with the automated machine. Solder ball locations and coplanarity might be damaged accidentally when it is manually handled by assembly workers.

3	Copper alloy	Contact area : Nickel(1.5μm) + Gold(0.76μm)	6	SUS	PICK UP CAP
		Other area : Nickel(1.5μm)	5	HIPS	TRAY, GRAY
2	LCP	BLACK, UL94V-0	4	TIN	Sn(96.5)-Ag(3)-Cu(0.5)
1	LCP	BLACK, UL94V-0			
NO.	MATERIAL	FINISH . REMARKS	NO.	MATERIAL	FINISH . REMARKS
UNITS	mm	SCALE	2 : 1	COUNT	1
		DESCRIPTION OF REVISIONS	DESIGNED	CHECKED	DATE
		DIS-F-00004025	MK. EZAKI	TM. MATSUO	20181220
APPROVED : T. MATSUO		20110712	DRAWING NO. EDC3-331496-01		
CHECKED : T. MATSUO		20110712	PART NO. IT5M-300S-BGA(37)		
DESIGNED : T. KIKUCHI		20110711	CODE NO. CL636-1504-9-37		
DRAWN : J. HUANG		20110711			

Aug.1.2022 Copyright 2022 HIROSE ELECTRIC CO., LTD. All Rights Reserved.
 In case of consideration for using Automotive equipment / device which demand high reliability, kindly contact our sales window correspondents.



HRS	DRAWING NO.	EDC3-331496-01
	PART NO.	IT5M-300S-BGA(37)
	CODE NO.	CL636-1504-9-37
		2/2