

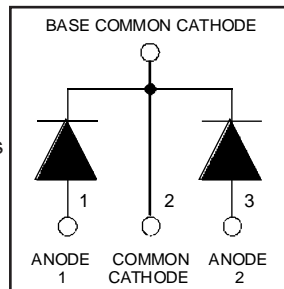
HFA80NK40C

HEXFRED™

Ultrafast, Soft Recovery Diode

Features

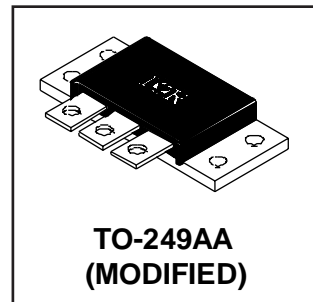
- Reduced RFI and EMI
- Reduced Snubbing
- Extensive Characterization of Recovery Parameters



$V_R = 400V$
$V_F(\text{typ.})^{\text{Ⓢ}} = 1V$
$I_{F(AV)} = 80A$
$Q_{rr}(\text{typ.}) = 200nC$
$I_{RRM}(\text{typ.}) = 6A$
$t_{rr}(\text{typ.}) = 30ns$
$di_{(rec)M}/dt(\text{typ.})^{\text{Ⓢ}} = 190A/\mu s$

Description

HEXFRED™ diodes are optimized to reduce losses and EMI/RFI in high frequency power conditioning systems. An extensive characterization of the recovery behavior for different values of current, temperature and di/dt simplifies the calculations of losses in the operating conditions. The softness of the recovery eliminates the need for a snubber in most applications. These devices are ideally suited for power converters, motors drives and other applications where switching losses are significant portion of the total losses.



Absolute Maximum Ratings (per Leg)

	Parameter	Max.	Units
V_R	Cathode-to-Anode Voltage	400	V
$I_F @ T_C = 25^\circ C$	Continuous Forward Current	89	A
$I_F @ T_C = 100^\circ C$	Continuous Forward Current	44	
I_{FSM}	Single Pulse Forward Current ①	300	W
I_{AS}	Maximum Single Pulse Avalanche Current ②	5.0	
E_{AS}	Non-Repetitive Avalanche Energy ③	1.4	mJ
$P_D @ T_C = 25^\circ C$	Maximum Power Dissipation	160	W
$P_D @ T_C = 100^\circ C$	Maximum Power Dissipation	63	
T_J	Operating Junction and	-55 to +150	°C
T_{STG}	Storage Temperature Range		
	Soldering Temperature, for 10 sec.	300 (0.063 in. (1.6mm) from case)	

Thermal - Mechanical Characteristics

	Parameter	Min.	Typ.	Max.	Units
$R_{\theta JC}$	Junction-to-Case, Single Leg Conducting	----	----	0.80	°C/W
	Junction-to-Case, Both Legs Conducting	----	----	0.40	
$R_{\theta CS}$	Case-to-Sink, Flat , Greased Surface	----	0.10	----	K/W
Wt	Weight	----	58 (2.0)	----	g (oz)
	Mounting Torque	35 (4.0)	----	50 (5.7)	lbf•in (N•m)

Note: ① Limited by junction temperature
 ② L = 100μH, duty cycle limited by max T_J
 ③ 125°C

HFA80NK40C

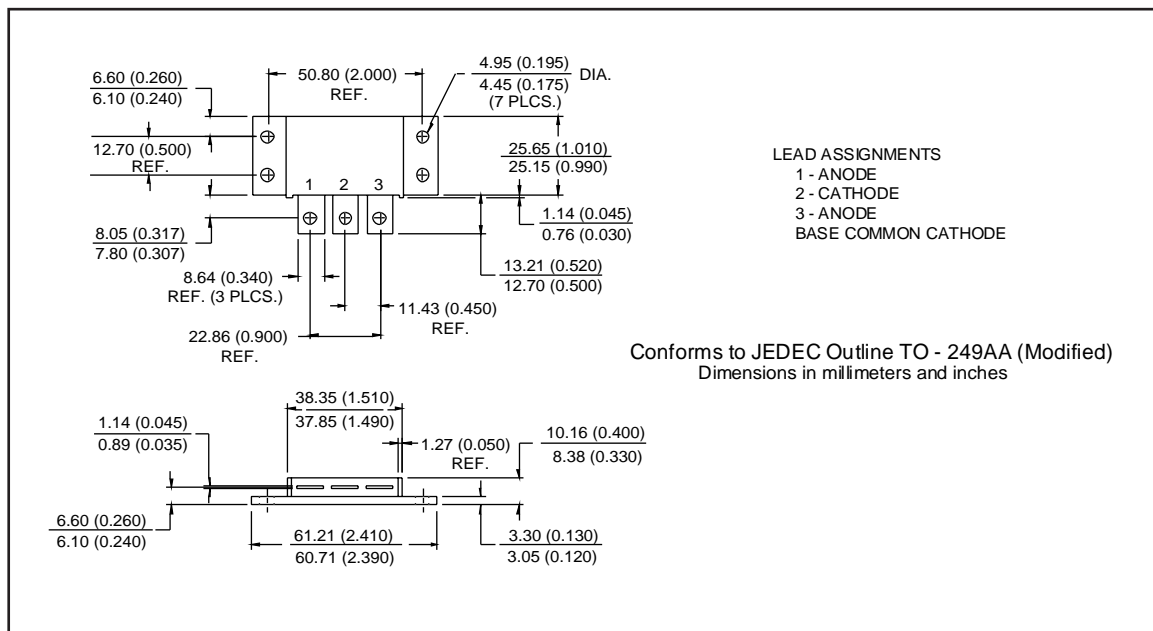
International
IOR Rectifier

Electrical Characteristics (per Leg) @ T_J = 25°C (unless otherwise specified)

	Parameter	Min.	Typ.	Max.	Units	Test Conditions	
V _{BR}	Cathode Anode Breakdown Voltage	400	—	—	V	I _R = 100μA	
V _{FM}	Max Forward Voltage	—	1.1	1.3	V	I _F = 40A	
		—	1.3	1.5		I _F = 80A	See Fig. 1
		—	1.0	1.2	V	I _F = 40A, T _J = 125°C	
I _{RM}	Max Reverse Leakage Current	—	0.50	3.0	μA	V _R = V _R Rated	
		—	0.75	4.0	mA	T _J = 125°C, V _R = 320V	See Fig. 2
C _T	Junction Capacitance	—	90	125	pF	V _R = 200V	See Fig. 3
L _S	Series Inductance	—	8.0	—	nH	From terminal hole to terminal hole	

Dynamic Recovery Characteristics (per Leg) @ T_J = 25°C (unless otherwise specified)

	Parameter	Min.	Typ.	Max.	Units	Test Conditions	
t _{rr}	Reverse Recovery Time	—	30	—	ns	I _F = 1.0A, di _F /dt = 200A/μs, V _R = 30V	
t _{rr1}		—	67	100		T _J = 25°C	See Fig.
t _{rr2}		—	110	170		T _J = 125°C	5
I _{RRM1}	Peak Recovery Current	—	6.0	11	A	T _J = 25°C	See Fig.
I _{RRM2}		—	9.0	16		T _J = 125°C	
Q _{rr1}	Reverse Recovery Charge	—	200	540	nC	T _J = 25°C	See Fig.
Q _{rr2}		—	500	1300		T _J = 125°C	
di _{(rec)M} /dt1	Peak Rate of Fall of Recovery Current During t _b	—	240	—	A/μs	T _J = 25°C	See Fig.
di _{(rec)M} /dt2		—	190	—		T _J = 125°C	



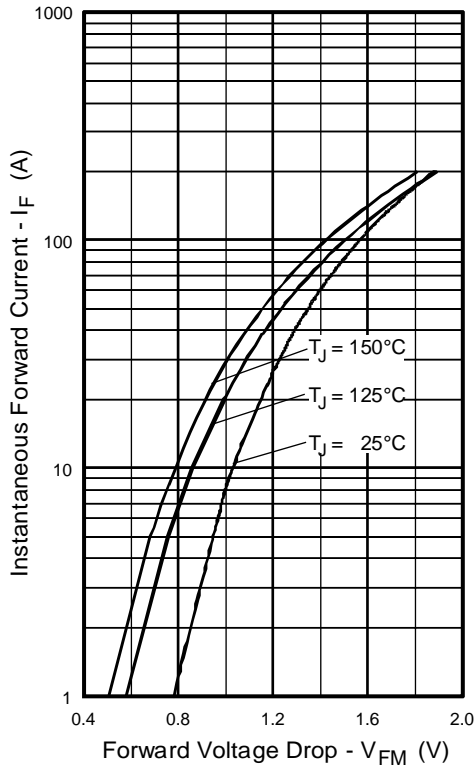


Fig. 1 - Maximum Forward Voltage Drop vs. Instantaneous Forward Current, (per Leg)

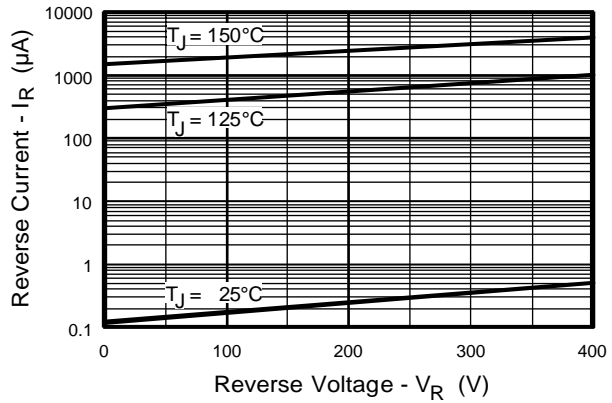


Fig. 2 - Typical Reverse Current vs. Reverse Voltage, (per Leg)

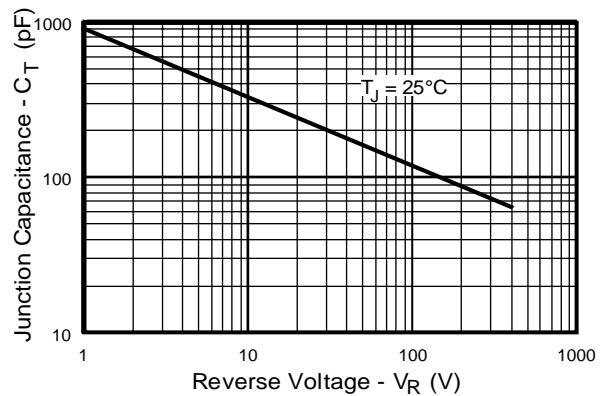


Fig. 3 - Typical Junction Capacitance vs. Reverse Voltage, (per Leg)

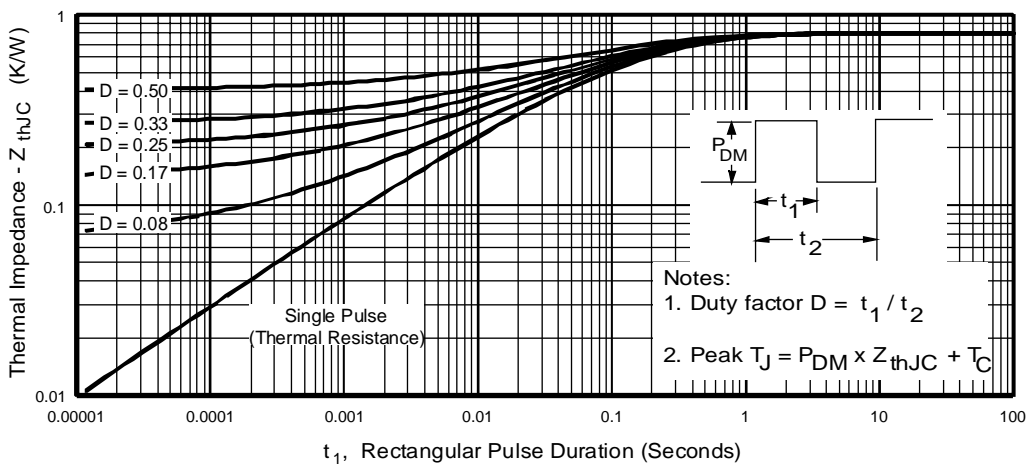


Fig. 4 - Maximum Thermal Impedance Z_{thJC} Characteristics, (per Leg)

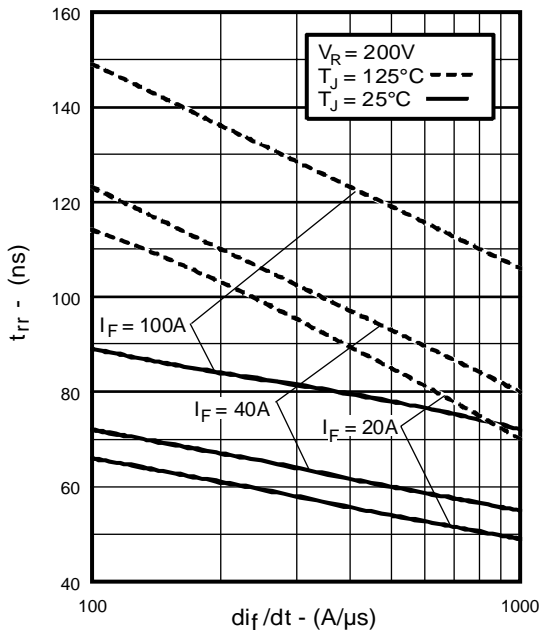


Fig. 5 - Typical Reverse Recovery vs. di_F/dt , (per Leg)

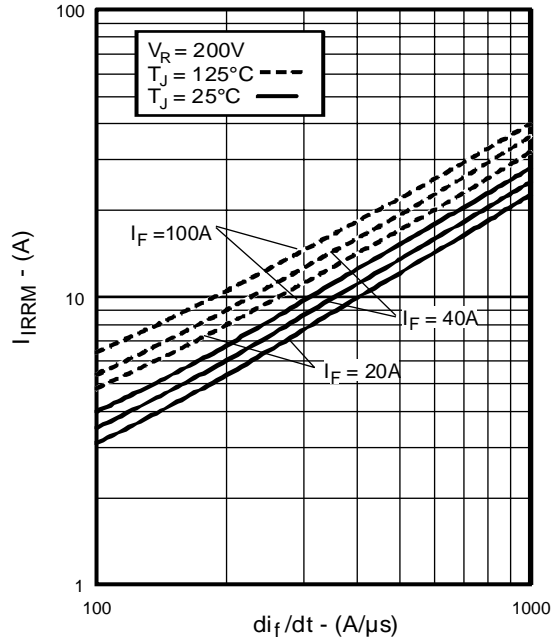


Fig. 6 - Typical Recovery Current vs. di_F/dt , (per Leg)

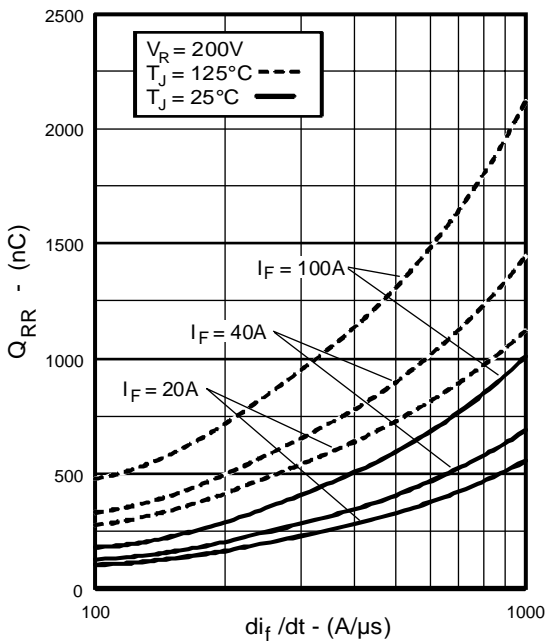


Fig. 7 - Typical Stored Charge vs. di_F/dt , (per Leg)

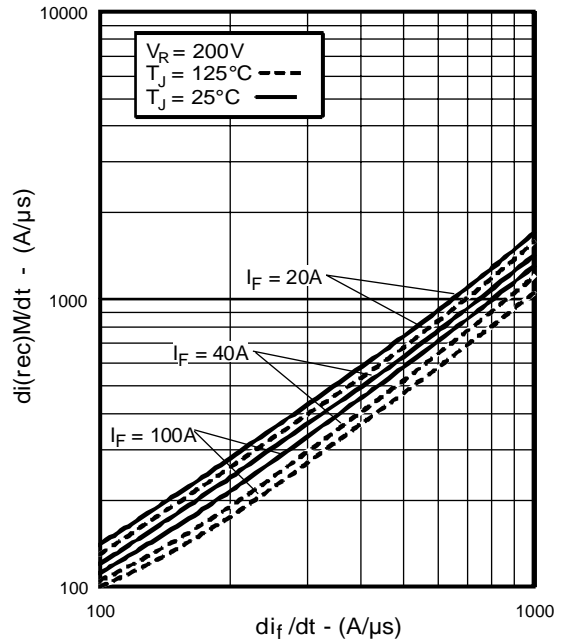


Fig. 8 - Typical $di_{(rec)M}/dt$ vs. di_F/dt , (per Leg)

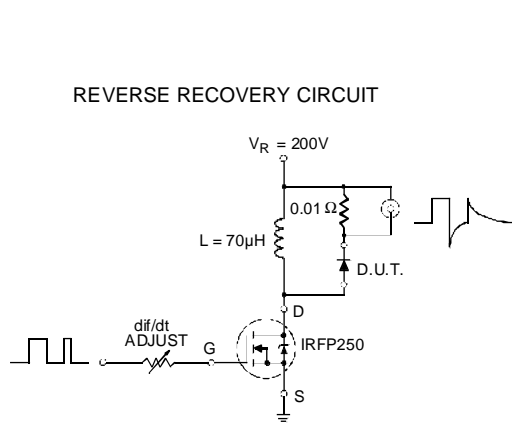
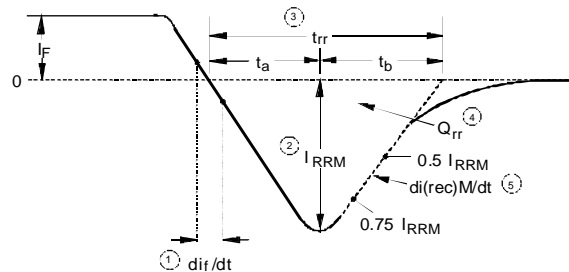


Fig. 9 - Reverse Recovery Parameter Test Circuit



1. di/dt - Rate of change of current through zero crossing
2. I_{RRM} - Peak reverse recovery current
3. t_{rr} - Reverse recovery time measured from zero crossing point of negative going I_F to point where a line passing through $0.75 I_{RRM}$ and $0.50 I_{RRM}$ extrapolated to zero current
4. Q_{rr} - Area under curve defined by t_{rr} and I_{RRM}

$$Q_{rr} = \frac{t_{rr} \times I_{RRM}}{2}$$
5. $di_{(rec)}/dt$ - Peak rate of change of current during t_b portion of t_{rr}

Fig. 10 - Reverse Recovery Waveform and Definitions

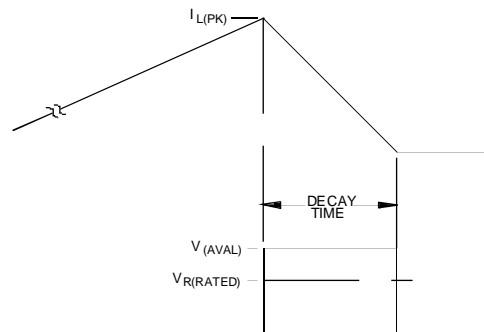
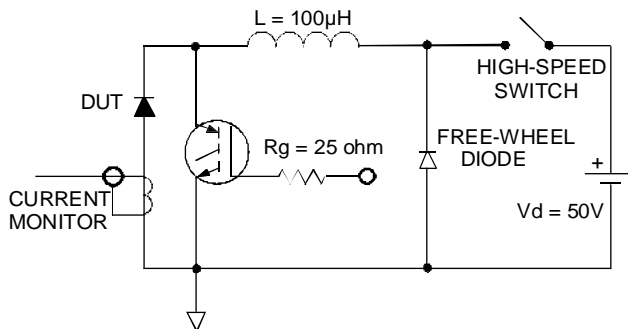


Fig. 11 - Avalanche Test Circuit and Waveforms