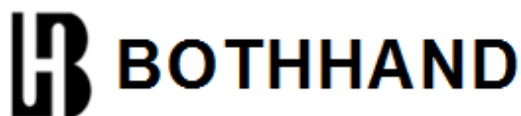
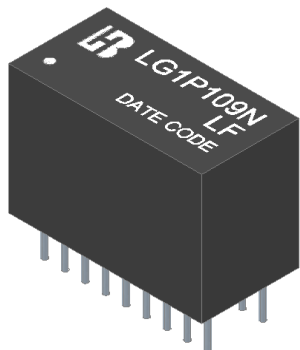


**LG1P109N LF**  
**DIP 1000 BASE-T Single Port Discrete**  
**LAN Magnetics**



**Feature**



- Designed to meet IEEE 802.3ab requirement, including 350uH OCL with 8mA bias.
- Complying with ROHS requirements.
- Operating temperature range: 0°C to +70°C.
- Storage temperature range: -25°C to +85°C.

**Electrical Specifications @ 25°C**

Part Number	Turns Ratio (±5%)		OCL (uH Min) @100KHz/0.1V with 8mA DC Bias	L.L (uH Max)	C <sub>www</sub> (pF Max)	DCR (Ω Max)	HI-POT
	TX	RX					
LG1P109N LF	1CT:1CT	1CT:1CT	350	0.5	96	1.2	AC1500V/1mA

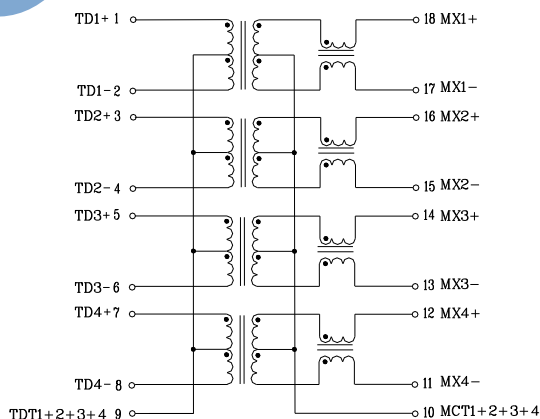
**Continue**

Part Number	Insertion Loss (dB Max)	Return Loss (dB Min)				
		1-100MHz	1-30MHz	40MHz	50MHz	60-80MHz
LG1P109N LF	-1.1	-18	-16	-14.08	-12.5	-10

**Continue**

Part Number	Cross talk (dB Min)			DCMR (dB Min)		
	0.3-30MHz	30-60MHz	60-100MHz	1-30MHz	30-60MHz	60-125MHz
LG1P109N LF	-40	-35	-30	-30	-25	-20

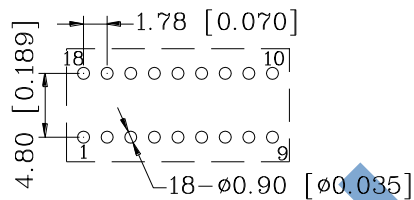
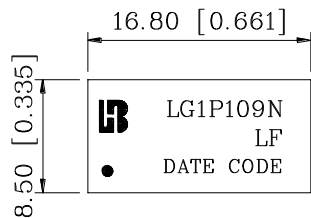
**Schematic**



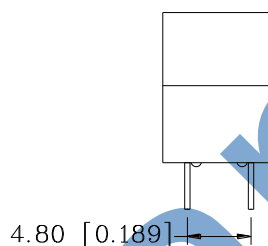
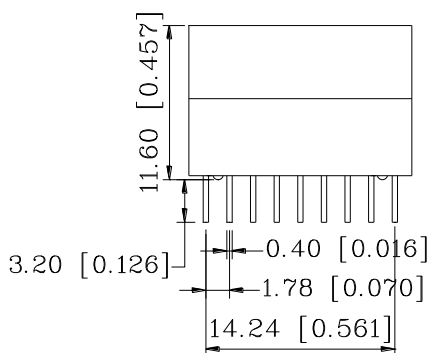
**LG1P109N LF**  
**DIP 1000 BASE-T Single Port Discrete**  
**LAN Magnetics**



**Mechanical**

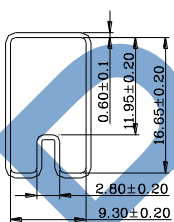


SUGGESTED PAD LAYOUT

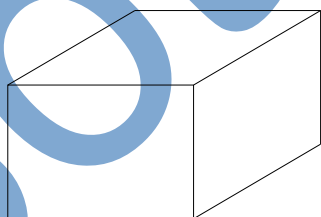


Units: mm[Inches] Tolerances : xx.xx±0.25[0.010]  
 0.xx±0.05[0.002]

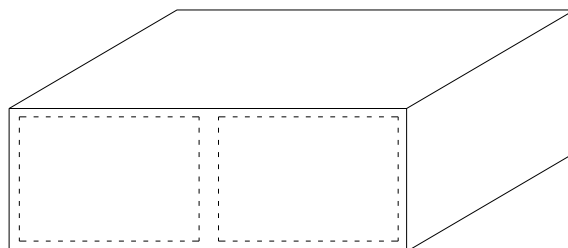
**TUBE PACKAGE**



TUBE



INNER BOX: 567x135x125



OUTER CARTON: 598x287x150

1. 1 TUBE=31PCS
2. 1 INNER BOX=70TUBE=70x31=2170PCS
3. 1 OUTER CARTON=2 INNER BOX=2x2170=4340PCS