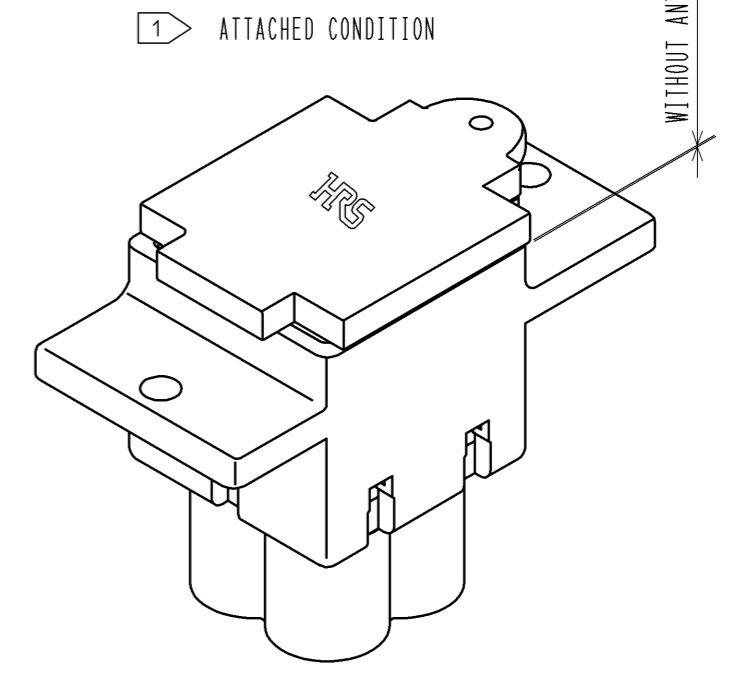
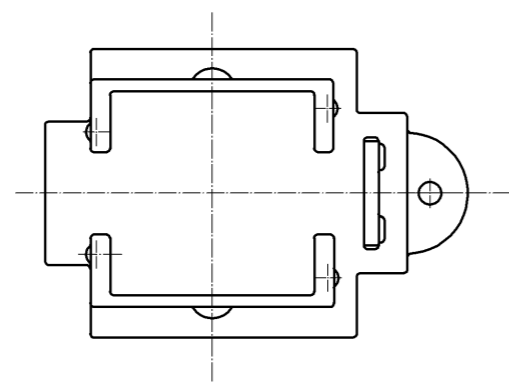
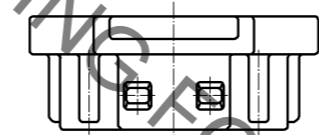
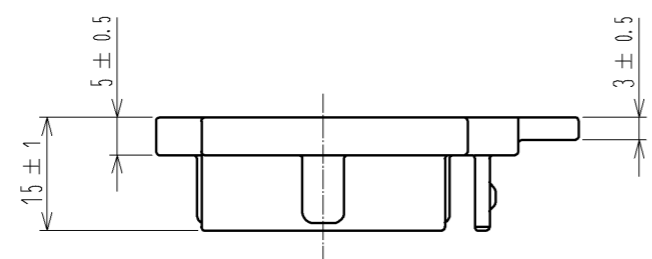
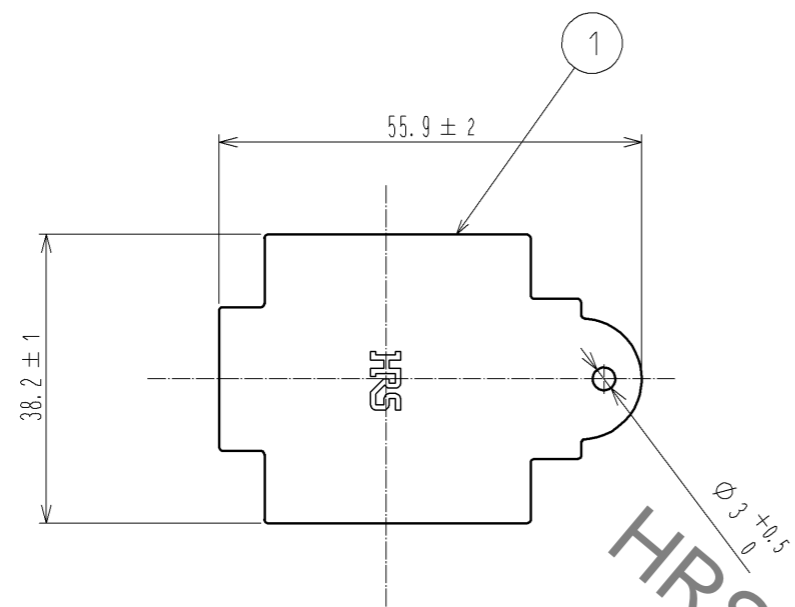


Aug.1.2022 Copyright 2022 HIROSE ELECTRIC CO., LTD. All Rights Reserved.
 In case of consideration for using Automotive equipment / device which demand high reliability, kindly contact our sales window correspondents.



HRS DRAWING FOR REFERENCE

NOTES 1 THIS PRODUCT SHALL BE FITTED TO THE CONNECTOR WITHOUT ANY GAP SUCH AS ATTACHED CONDITION.
 2. THIS PRODUCT IS A CAP FOR EM35MR※-4※.
 IT IS APPLICABLE REGARDLESS OF GIVEN ALPHABETS OR NUMBERS SHOWN AT ※.

1	CHLOROPRENE RUBBER (BLACK)						
NO.	MATERIAL	FINISH . REMARKS	NO.	MATERIAL	FINISH . REMARKS		
UNITS mm			SCALE 1 : 1		DESCRIPTION OF REVISIONS	DESIGNED	CHECKED
HRS HIROSE ELECTRIC CO., LTD.		APPROVED : EJ. KUNII	14. 02. 19	DRAWING NO. EDC3-117874-00			
		CHECKED : HY. KISHI	14. 02. 19	PART NO. EM35MR-C			
		DESIGNED : DS. MATSUNE	14. 02. 18	CODE NO. CL138-0029-3-00			
		DRAWN : DS. MATSUNE	14. 02. 18			△ 1/1	