

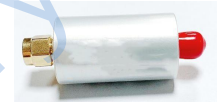
Features

- good attenuation rate, 1.35 typ. 20dB/ 3dB BW ratio
- rugged shielded case
- other SLP models available with wide selection of cut-off frequencies

Applications

- lab use
- test equipment
- video equipment

HT-SLP-15+

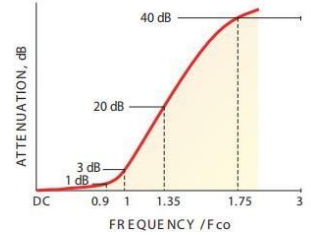


50Ω DC to 15 MHz

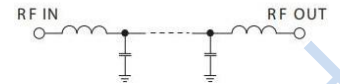
Low Pass Filter Electrical Specifications					
PASSBAND (MHz)	FCO ₂ (MHz) Nom.	STOPBAND (MHz)		VSWR	
		(Loss<20dB)	(Loss>40dB)	Passband Typ.	Stopband Typ.
DC-15	17	23-32	32-200	1.7	18

1 dB compression at +13 dBm input power

typical frequency response



electrical schematic

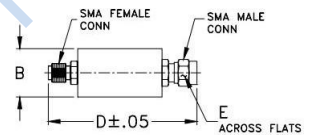


Maximum Ratings	
Operating Temperature	-55°C to 100°C
Storage Temperature	-55°C to 100°C
RF Power Input*	0.5W max.

Permanent damage may occur if any of these limits are exceeded.

Typical Performance Data					
Frequency (MHz)	Insertion Loss (dB)		Return Loss (dB)	Frequency (MHz)	Group Delay (nsec)
	α	σ			
1.0	0.21	0.04	24.91	1.00	48.07
3.0	0.26	0.04	20.32	1.10	47.91
5.0	0.30	0.04	20.46	1.30	48.21
7.0	0.33	0.05	25.27	1.40	47.67
9.0	0.38	0.05	24.09	1.60	48.07
11.0	0.47	0.07	20.00	1.80	47.68
13.0	0.58	0.07	19.00	2.00	48.30
15.0	0.81	0.06	16.36	2.30	48.44
17.0	2.32	0.37	7.61	2.50	48.37
19.0	8.82	0.63	2.63	2.90	48.63
19.8	12.25	0.57	2.04	3.20	48.63
20.6	15.66	0.53	1.72	3.60	48.80
21.4	18.93	0.53	1.51	4.00	48.88
22.2	22.02	0.48	1.36	4.60	49.48
23.0	24.94	0.48	1.25	5.10	49.49
23.8	27.72	0.47	1.15	5.80	50.43
25.4	32.87	0.50	0.99	6.50	50.77
27.1	37.90	0.60	0.86	7.30	51.87
28.7	42.24	0.70	0.76	8.20	53.05
30.4	46.55	0.86	0.67	9.30	54.47
32.0	50.45	1.02	0.60	10.40	56.61
33.6	54.18	1.48	0.55	11.70	60.33
54.4	77.82	6.04	0.22	13.10	66.08
75.2	77.17	4.69	0.12	15.00	80.27
96.0	81.80	4.39	0.09	17.00	100.53
116.8	80.95	4.80	0.08	18.80	81.42
137.6	80.75	3.87	0.07	21.10	43.48
158.4	83.26	4.95	0.07	23.00	28.31
179.2	79.58	3.64	0.06	26.60	15.72
200.0	80.96	5.21	0.06	30.00	10.37

Outline Drawing



Outline Dimensions: Unit (mm)			
B	17.02	E	7.92
D	50.29		
wt	42.0		

