

ESDUL36WT

Transient Voltage Suppressors

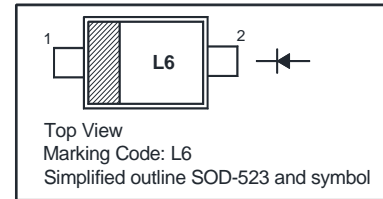
ESD Protection

Features

- Protects one I/O line
- Low leakage current
- Low clamping voltage

PINNING

PIN	DESCRIPTION
1	Cathode
2	Anode

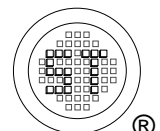


Absolute Maximum Ratings ($T_a = 25\text{ }^\circ\text{C}$)

Parameter	Symbol	Value	Unit
IEC61000-4-2 (ESD) Air Contact	V_{ESD}	± 25 ± 25	KV
Peak Pulse Power ($t_p = 8/20\ \mu\text{s}$)	P_{PK}	120	W
Operation Temperature Range	T_j	- 55 to + 150	$^\circ\text{C}$
Storage Temperature Range	T_{stg}	- 55 to + 150	$^\circ\text{C}$

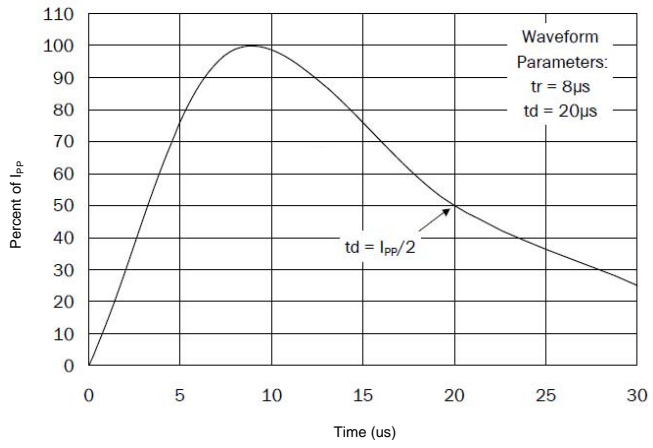
Characteristics at $T_a = 25\text{ }^\circ\text{C}$

Parameter	Symbol	Min.	Typ.	Max.	Unit
Reverse Stand-Off Voltage	V_{RWM}	-	-	36	V
Reverse Breakdown Voltage at $I_R = 1\ \text{mA}$	$V_{(BR)R}$	40	-	-	V
Reverse Current at $V_{RWM} = 36\ \text{V}$	I_R	-	-	1	μA
Clamping Voltage at $I_{PP} = 0.8\ \text{A}$, $t_p = 8/20\ \mu\text{s}$	V_C	-	-	57	V
Junction Capacitance at $V_R = 0\ \text{V}$, $f = 1\ \text{MHz}$	C_j	-	25	-	pF

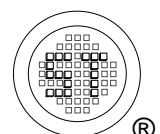
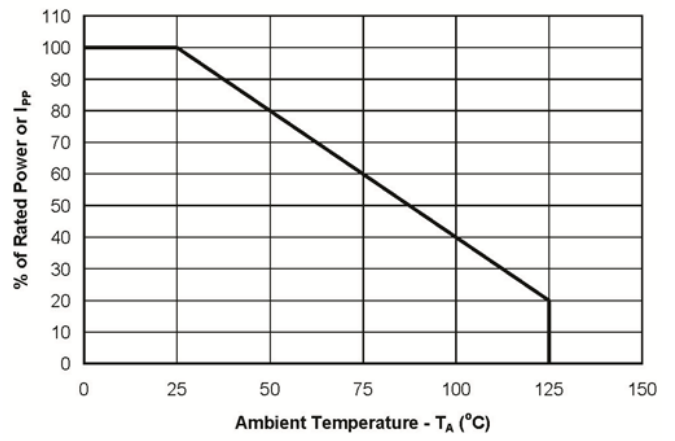


ESDUL36WT

Pulse Waveform



Power Derating Curve

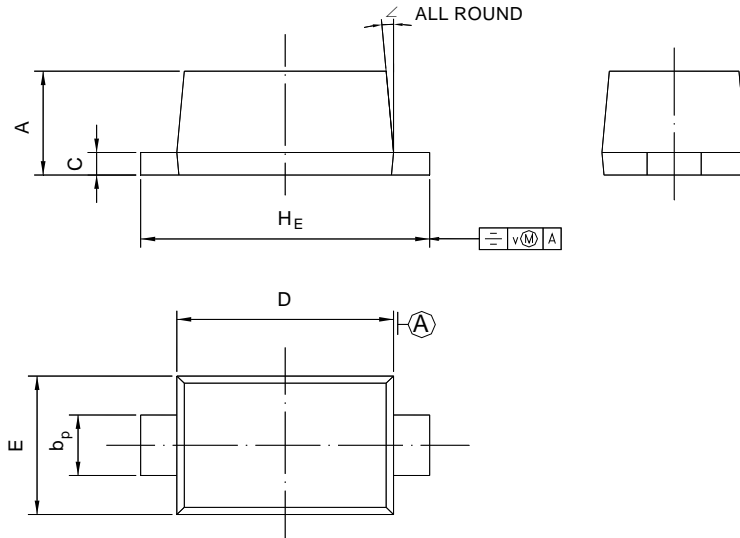


ESDUL36WT

PACKAGE OUTLINE

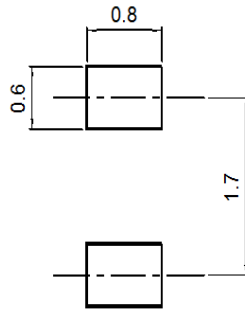
Plastic surface mounted package; 2 leads

SOD-523



UNIT	A	b_p	C	D	E	H_E	V	\angle
mm	0.70 0.60	0.4 0.3	0.135 0.100	1.25 1.15	0.85 0.75	1.7 1.5	0.1	5°

Recommended Soldering Footprint



Packing information

Package	Tape Width (mm)	Pitch		Reel Size		Per Reel Packing Quantity
		mm	(inch)	mm	(inch)	
SOD-523	8	4 ± 0.1	0.157 ± 0.004	178	7	4,000

