

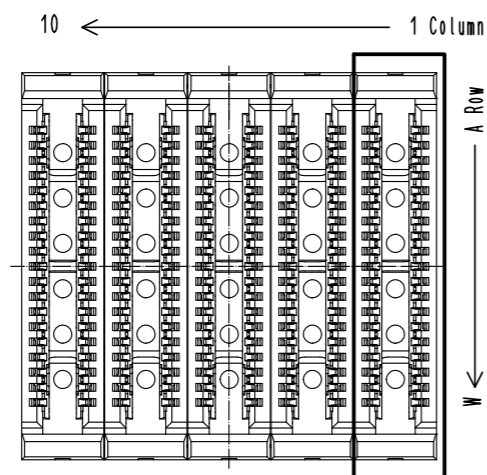
Aug.1.2022 Copyright 2022 HIROSE ELECTRIC CO., LTD. All Rights Reserved.  
In case of consideration for using Automotive equipment / device which demand high reliability, kindly contact our sales window correspondents.

**Note.**

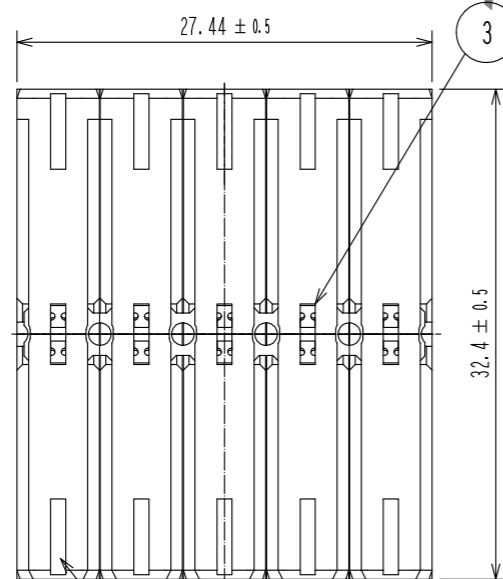
- 1 Mounting side is mated with Plug-M:IT8M-120P-BGA-H(\*\*) and fixed with the latch.
- 2 Mating side is mated with Plug-D:IT8D-120P-BGA-H(\*\*).
- 3 Lot No. shall be marked at the indicated position.
- 4 IT8 Series apply GSSG. pin assign as shown. Twisted pairs are indicated by the hatch marks. Twisted pairs are twisted in the center to reduce FEXT.
- 5 The indicated mother board and daughter card shall be fastened to the additional reinforcements to prevent the stress on IT8\*-120P-BGA-H(\*\*) solder joints.
- 6 This product consists of 120 signal contacts and 70 ground contacts.
- 7 The spacer height of this product assembled with mounted IT8M-120P-BGA-H(\*\*) and IT8D-120P-BGA-H(\*\*) shall be indicated in Table 1.

Table 1 Spacer height

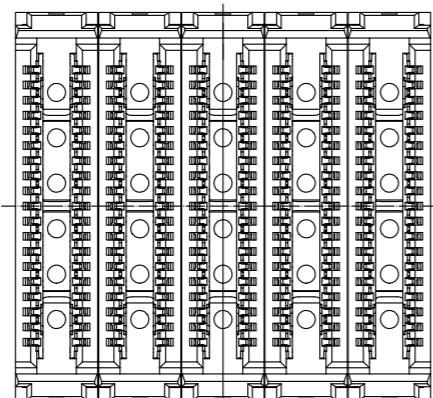
Spacer height (X)	35	36	37
Plug-D (Detachable Side)	IT8D-***P-BGA-0H(**)	IT8D-***P-BGA-0H(**)	IT8D-***P-BGA-1H(**)
Interposer	IT8-***S-35H(**)		
Plug-M (Mounting Side)	IT8M-***P-BGA-0H(**)	IT8M-***P-BGA-1H(**)	IT8M-***P-BGA-1H(**)



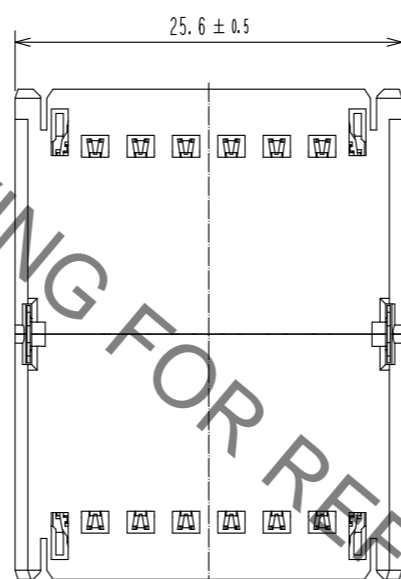
2 Mating Side



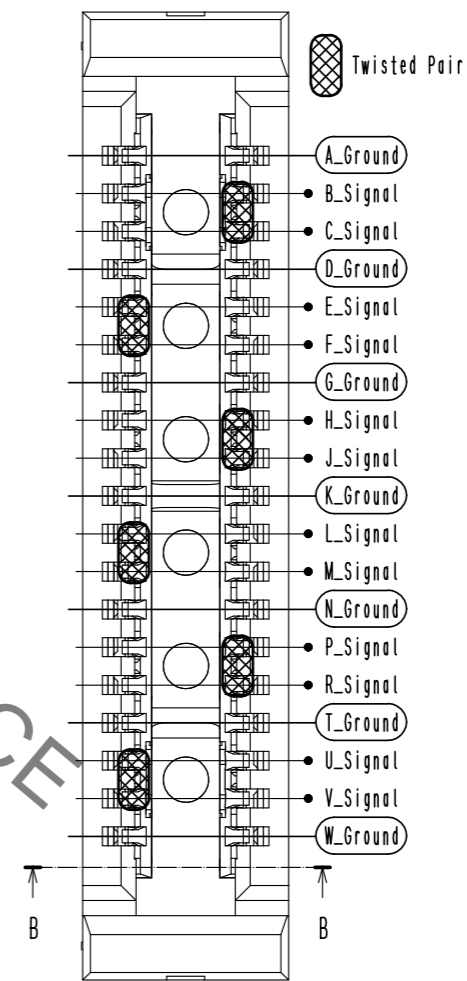
3



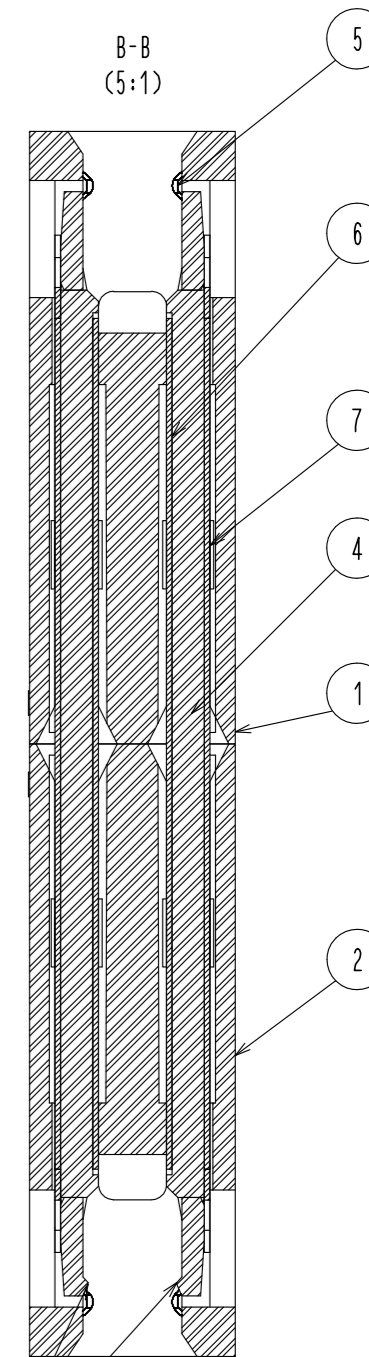
1 Mounting Side



4 A (5:1)



B-B (5:1)



1 Latch

NO.	MATERIAL	FINISH . REMARKS	NO.	MATERIAL	FINISH . REMARKS
4	LCP	BLACK. UL94V-0	7	SUS	
3	SUS		6	SUS	
2	PPS	BLACK. UL94V-0	5	Copper Alloy	Contact area:Nickel 1.27µm min.+Gold 0.76µm min.
1	PPS	GRAY. UL94V-0			Other area:Nickel 1.27µm min.

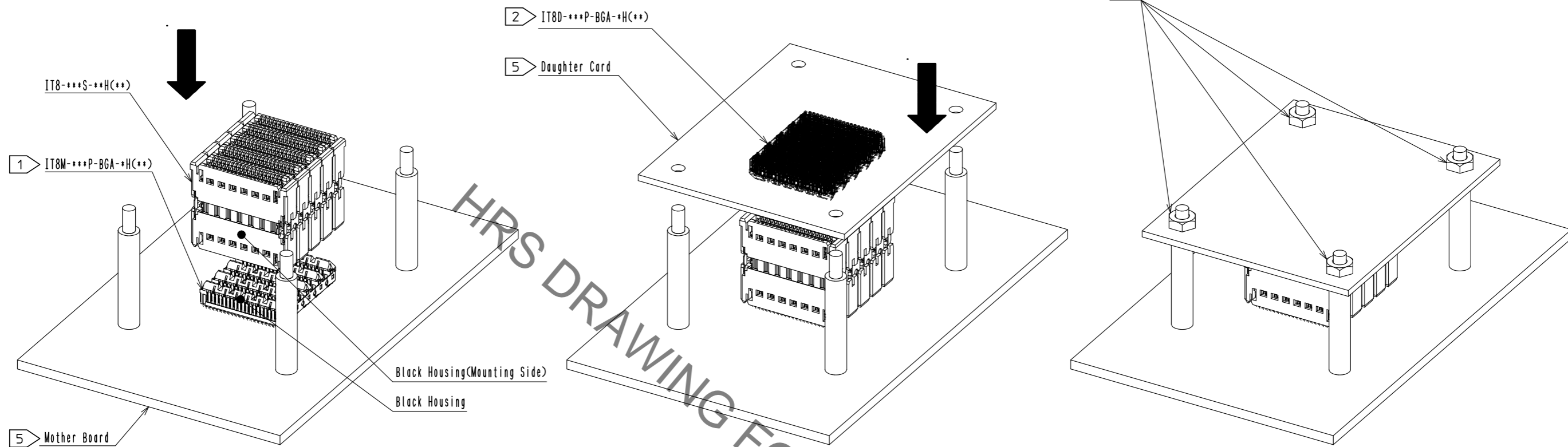
UNITS	SCALE	COUNT	DESCRIPTION OF REVISIONS	DESIGNED	CHECKED	DATE
mm	2 : 1	△				

<b>HRS</b> HIROSE ELECTRIC CO., LTD.	APPROVED : MK. EZAKI	16.08.08	DRAWING NO. EDC-355058-00-00 PART NO. IT8-120S-35H CODE NO. CL636-3500-9-00
	CHECKED : YS. TAKEUCHI	16.08.08	
	DESIGNED : NH. TAMAI	16.08.08	
	DRAWN : ST. YAMADA	16.08.08	

Aug.1.2022 Copyright 2022 HIROSE ELECTRIC CO., LTD. All Rights Reserved.  
 In case of consideration for using Automotive equipment / device which demand high reliability, kindly contact our sales window correspondents.

### IT8 Assembly Process

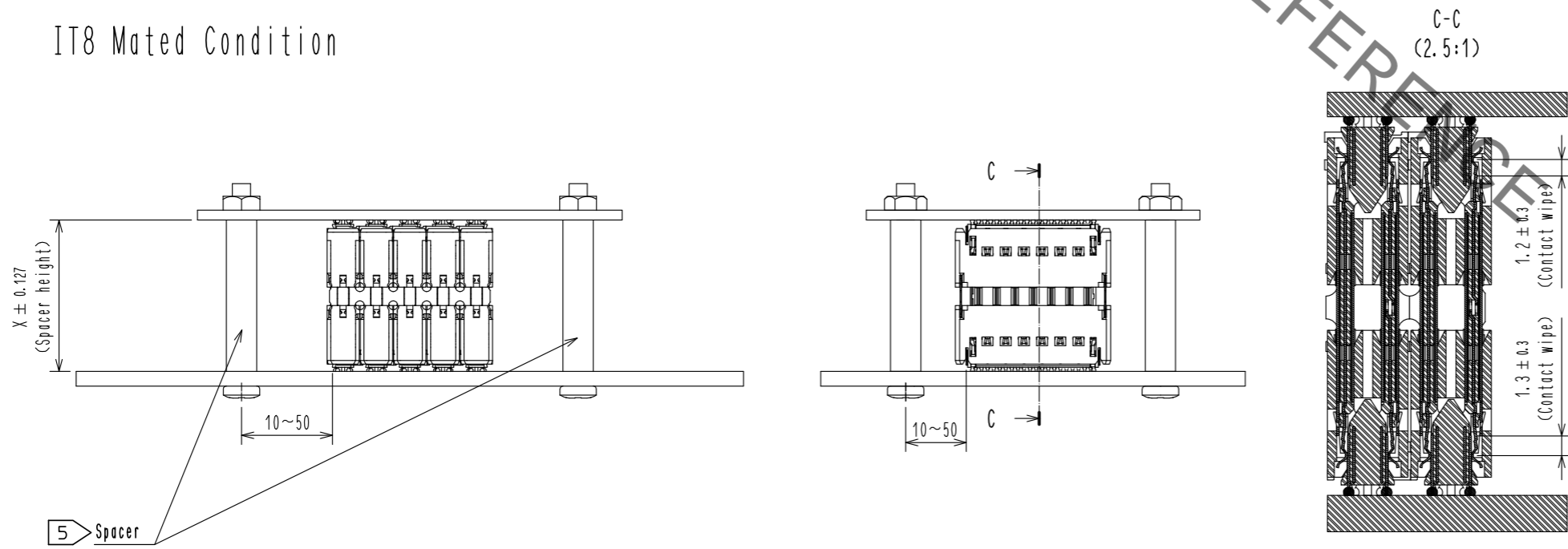


1) Insert mounting side of Interposer(IT8-\*\*\*S-\*\*H(\*\*)) by pressing on top of Interposer into reflowed Mounting Plug(IT8M-\*\*\*P-BGA-\*\*H(\*\*)) having black housings.

2) Insert Detachable Plug(IT8D-\*\*\*P-BGA-\*\*H(\*\*)) having gray housings into mating side of Interposer(IT8-\*\*\*S-\*\*H(\*\*)).

3) Install and tighten nuts to fix mated Detachable Plug after completion of mating.

### IT8 Mated Condition



<b>HRS</b>	DRAWING NO.	EDC-355058-00-00	2/2
	PART NO.	IT8-120S-35H	
	CODE NO.	CL636-3500-9-00	