

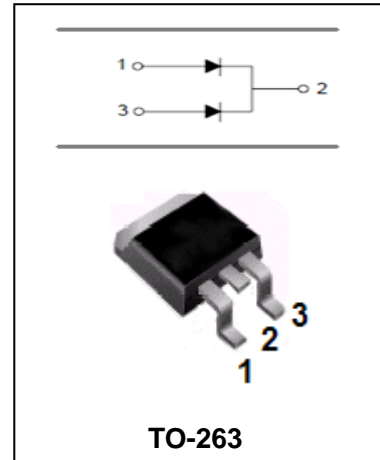
Schottky Barrier Rectifier

MBRB2030CT - MBRB20100CT

FEATURES

- High surge capacity
- For use in low voltage, high frequency inverters, Free Wheeling and polarity protection applications
- Metal silicon junction, majority carrier conduction
- High current capacity, low forward voltage drop
- Guard ring for over voltage protection

HF



Ordering Information

Part Number	Package	Shipping	Marking Code
MBRB2030CT	TO-263	50pcs / Tube or 800pcs / Tape & Reel	MBRB2030CT
MBRB2035CT	TO-263	50pcs / Tube or 800pcs / Tape & Reel	MBRB2035CT
MBRB2040CT	TO-263	50pcs / Tube or 800pcs / Tape & Reel	MBRB2040CT
MBRB2045CT	TO-263	50pcs / Tube or 800pcs / Tape & Reel	MBRB2045CT
MBRB2050CT	TO-263	50pcs / Tube or 800pcs / Tape & Reel	MBRB2050CT
MBRB2060CT	TO-263	50pcs / Tube or 800pcs / Tape & Reel	MBRB2060CT
MBRB2080CT	TO-263	50pcs / Tube or 800pcs / Tape & Reel	MBRB2080CT
MBRB20100CT	TO-263	50pcs / Tube or 800pcs / Tape & Reel	MBRB20100CT

MAXIMUM RATING operating temperature range applies unless otherwise specified

Symbol	Parameter	MBRB 2030 CT	MBRB 2035 CT	MBRB 2040 CT	MBRB 2045 CT	MBRB 2050 CT	MBRB 2060 CT	MBRB 2080 CT	MBRB 20100 CT	Unit
V_{RRM}	Repetitive Peak Reverse Voltage	30	35	40	45	50	60	80	100	V
V_{RMS}	RMS Voltage	21	25	28	32	35	42	56	70	V
V_{DC}	DC Blocking Voltage	30	35	40	45	50	60	80	100	V
$I_{F(AV)}$	Average Forward Rectified Current @ $T_A=100^\circ\text{C}$	20								A
I_{FSM}	Peak Forward Surge Current 8.3ms Single Half Sine-wave superimposed on rated load	150								A
$R_{\theta JC}$	Thermal Resistance *1	2.0								$^\circ\text{C}/\text{W}$
T_j, T_{stg}	Operating Junction and Storage Temperature Range	-55 to +150								$^\circ\text{C}$

Note: 1. Thermal resistance from junction to case.

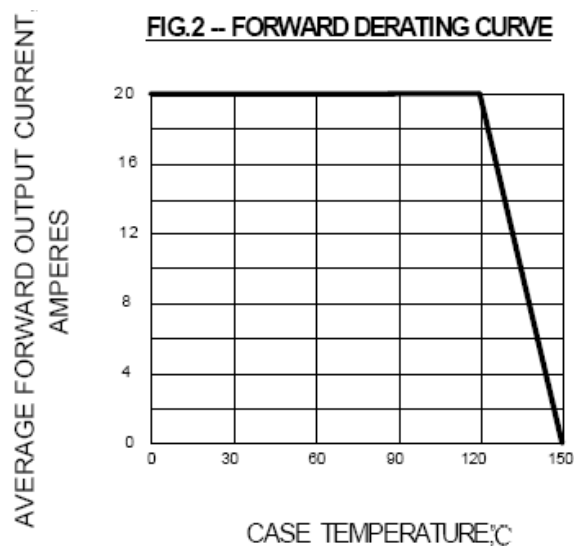
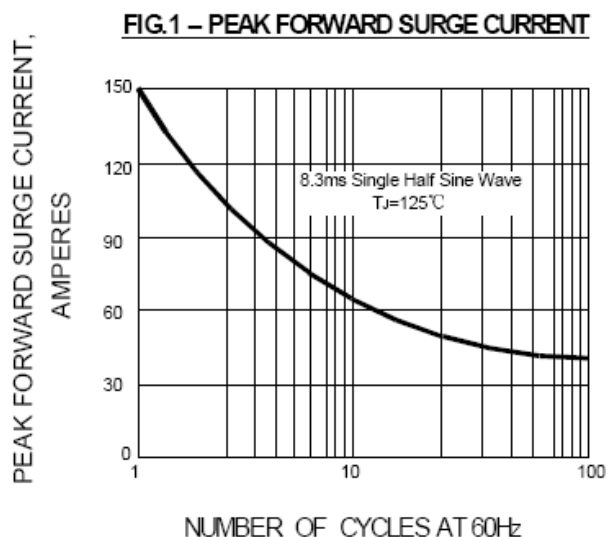
Schottky Barrier Rectifier

MBRB2030CT - MBRB20100CT

ELECTRICAL CHARACTERISTICS @ $T_a=25^\circ\text{C}$ unless otherwise specified

Parameter	Symbol	Test conditions	MBRB2030CT MBRB2045CT	MBRB2050CT MBRB2060CT	MBRB2080CT MBRB20100CT	UNIT
			MAX			
Reverse Current	I_R	$V_{RM}=V_{RRM}, T_A=25^\circ\text{C}$ $V_{RM}=V_{RRM}, T_A=125^\circ\text{C}$	0.1 15	0.1 25	0.1 50	mA
Forward Voltage	V_F	$I_F=10\text{A}, T_A=25^\circ\text{C}$ $I_F=10\text{A}, T_A=125^\circ\text{C}$	0.70 -	0.80 0.57	0.85 0.70	V

TYPICAL CHARACTERISTICS @ $T_a=25^\circ\text{C}$ unless otherwise specified



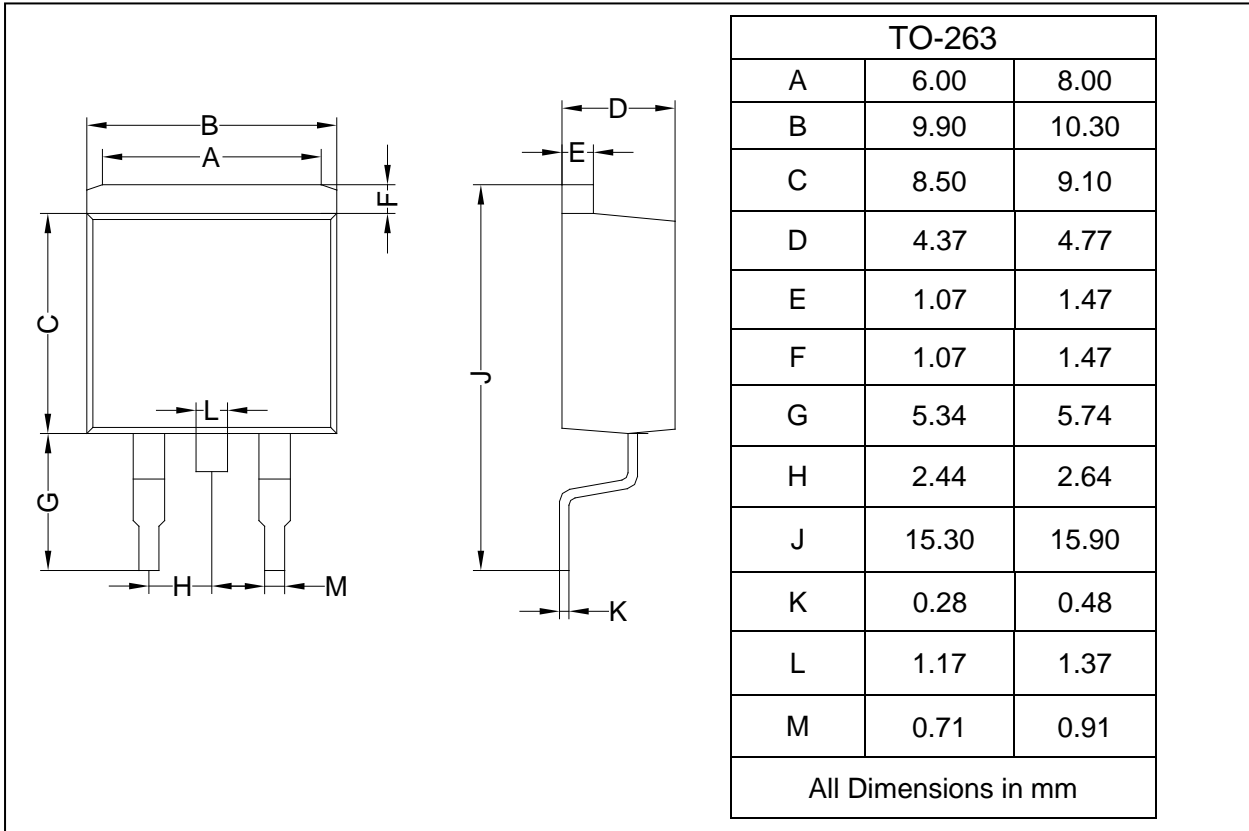
Schottky Barrier Rectifier

MBRB2030CT - MBRB20100CT

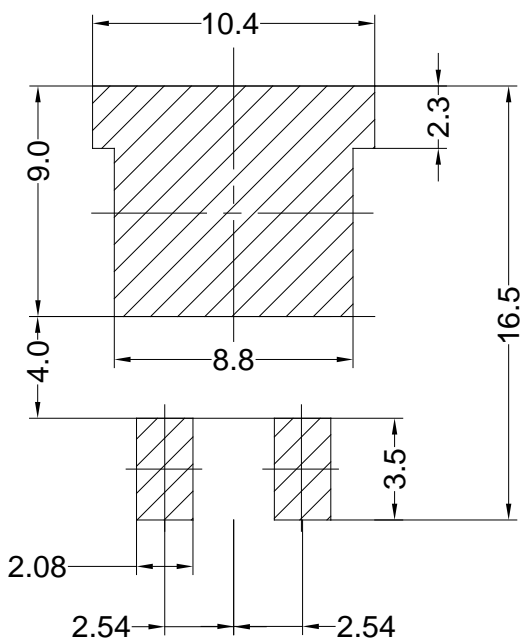
PACKAGE OUTLINE

Plastic surface mounted package

TO-263



SOLDERING FOOTPRINT



Unit: mm