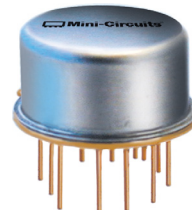


Plug-In Frequency Mixer

Level 13 (LO Power +13 dBm) 5 to 2500 MHz

ROK-186MH+



CASE STYLE: QQ96

Maximum Ratings

Operating Temperature	-55°C to 100°C
Storage Temperature	-55°C to 100°C
RF Power	200mW
IF Current	40mA
Permanent damage may occur if any of these limits are exceeded.	

Pin Connections

LO	5
RF	11
IF	2
GROUND	1,3,4,6,7,8,9,10,12
CASE GROUND	1,3,4,6,7,8,9,10,12

Features

- low conversion loss, 6.57 dB typ.
- wideband, 5 to 2500 MHz
- hermetically sealed

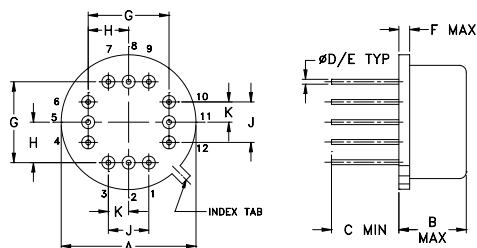
Applications

- VHF/UHF
- instrumentation
- GPS
- PCS/DCS

+RoHS Compliant

The +Suffix identifies RoHS Compliance. See our web site for RoHS Compliance methodologies and qualifications

Outline Drawing



Outline Dimensions (inch)

A	B	C	D	E	F	
.600	.250	.25	.016	.020	.04	
15.24	6.35	6.35	0.41	0.51	1.02	
G	H	J	K		wt	
.400	.200	.200	.100		grams	
10.16	5.08	5.08	2.54		4.0	

Electrical Specifications

FREQUENCY (MHz)		CONVERSION LOSS (dB)				LO-RF ISOLATION (dB)						LO-IF ISOLATION (dB)					
LO/RF	IF	Mid-Band		Total	Max.	L		M		U		L		M		U	
f_L-f_U		\bar{X}	σ	Range		Typ.	Min.	Typ.	Min.	Typ.	Min.	Typ.	Min.	Typ.	Min.	Typ.	Min.
5-2500	10-1000	6.57	0.11	8.5	9.5	33	25	35	25	25	20	33	20	31	25	27	20

1 dB COMP.: +9 dBm typ.

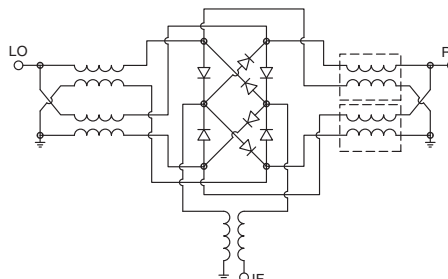
L = low range [f_L to $10 f_L$] M = mid range [$10 f_L$ to $f_U/2$] U = upper range [$f_U/2$ to f_U]

m = mid band [$2f_L$ to $f_U/2$]

Typical Performance Data

Frequency (MHz)		Conversion Loss (dB)	Isolation L-R (dB)	Isolation L-I (dB)	VSWR RF Port (:1)	VSWR LO Port (:1)
RF	LO	LO +13dBm	LO +13dBm	LO +13dBm	LO +13dBm	LO +13dBm
5.00	35.00	5.25	41.9	49.5	1.35	1.46
10.00	40.00	5.14	41.9	49.6	1.35	1.45
50.00	80.00	5.26	42.2	50.2	1.34	1.48
100.00	130.00	5.33	42.4	50.9	1.37	1.50
208.60	238.60	5.65	43.2	54.4	1.54	1.49
417.09	447.09	5.88	46.8	65.7	2.01	1.46
500.00	530.00	6.03	48.9	61.2	2.25	1.48
625.59	655.59	6.28	50.9	54.1	2.55	1.51
834.08	864.08	6.33	48.9	48.5	2.76	1.73
1000.00	1030.00	6.45	44.2	42.7	2.96	1.81
1042.58	1072.58	6.33	43.1	42.1	2.80	1.77
1251.07	1281.07	6.09	39.5	40.3	2.52	1.66
1459.57	1489.57	6.34	38.0	40.0	2.30	1.58
1500.00	1530.00	6.31	38.2	39.3	2.25	1.53
1668.06	1698.06	6.86	36.5	37.4	2.04	1.56
1876.56	1906.56	6.95	35.2	38.0	1.91	1.59
2000.00	2030.00	6.79	34.2	38.1	1.89	1.61
2085.05	2115.05	6.83	33.3	38.2	1.70	1.61
2293.55	2323.55	7.04	32.5	37.4	1.47	1.65
2470.00	2500.00	7.06	31.8	34.5	1.26	1.68
2500.00	2530.00	7.09	31.2	33.5	1.23	1.70

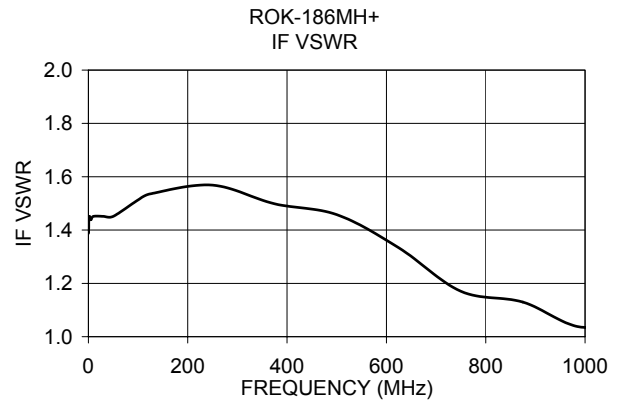
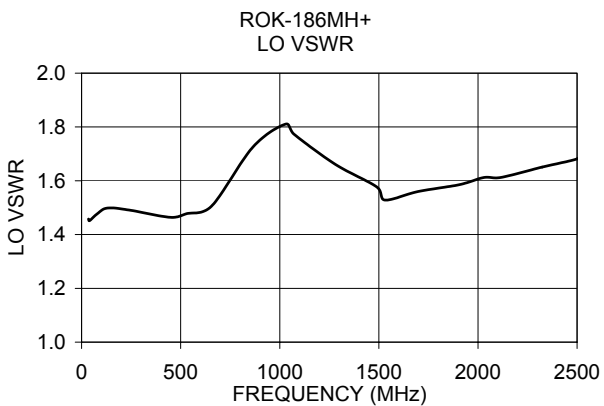
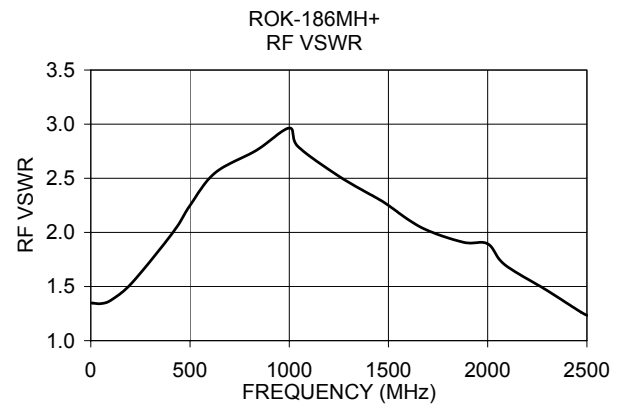
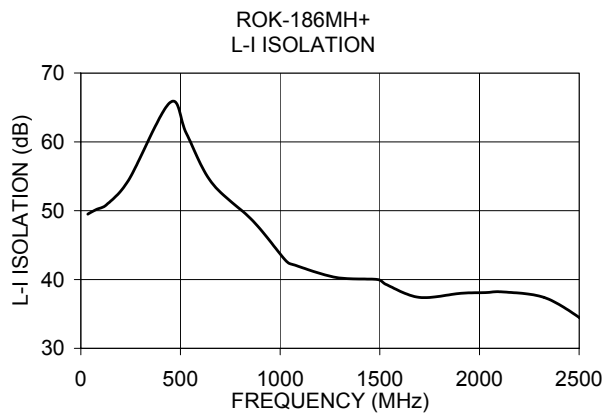
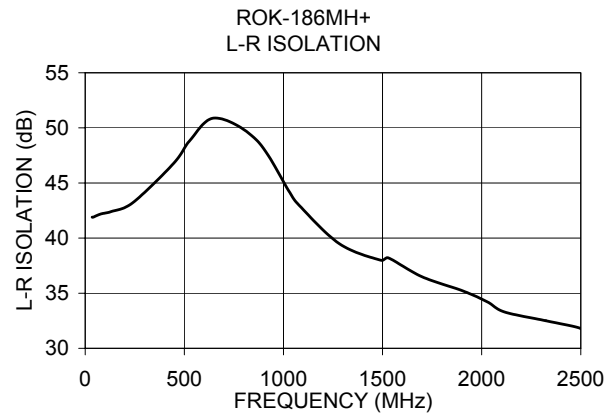
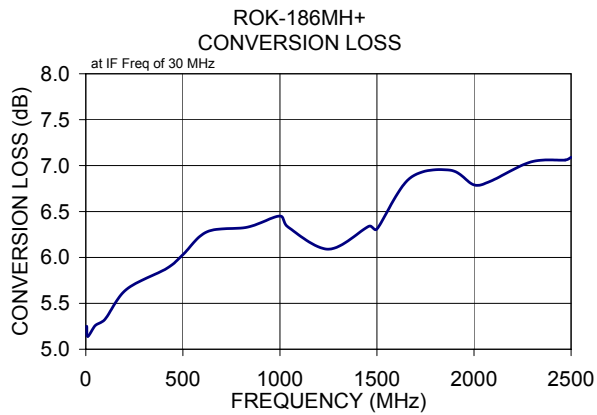
Electrical Schematic



Notes

- Performance and quality attributes and conditions not expressly stated in this specification document are intended to be excluded and do not form a part of this specification document.
- Electrical specifications and performance data contained in this specification document are based on Mini-Circuit's applicable established test performance criteria and measurement instructions.
- The parts covered by this specification document are subject to Mini-Circuit's standard limited warranty and terms and conditions (collectively, "Standard Terms"); Purchasers of this part are entitled to the rights and benefits contained therein. For a full statement of the Standard Terms and the exclusive rights and remedies thereunder, please visit Mini-Circuit's website at www.minicircuits.com/MCLStore/terms.jsp





Notes

- A. Performance and quality attributes and conditions not expressly stated in this specification document are intended to be excluded and do not form a part of this specification document.
- B. Electrical specifications and performance data contained in this specification document are based on Mini-Circuit's applicable established test performance criteria and measurement instructions.
- C. The parts covered by this specification document are subject to Mini-Circuits standard limited warranty and terms and conditions (collectively, "Standard Terms"); Purchasers of this part are entitled to the rights and benefits contained therein. For a full statement of the Standard Terms and the exclusive rights and remedies thereunder, please visit Mini-Circuits' website at www.minicircuits.com/MCLStore/terms.jsp

